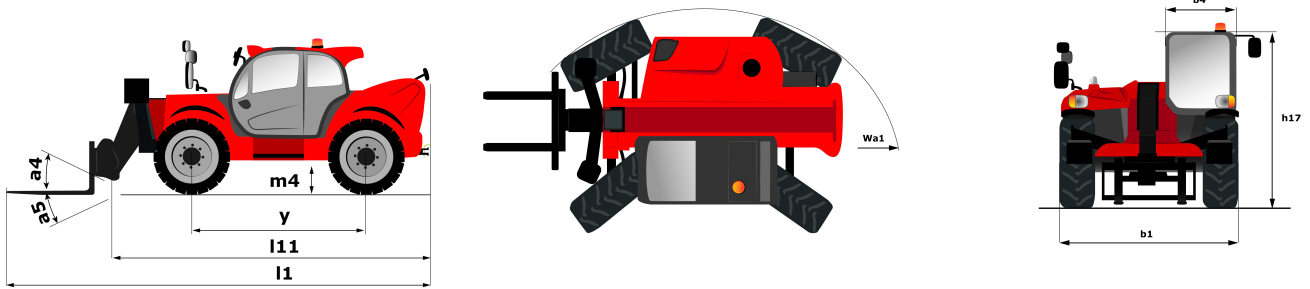

Karta danych technicznych :

MT 1440



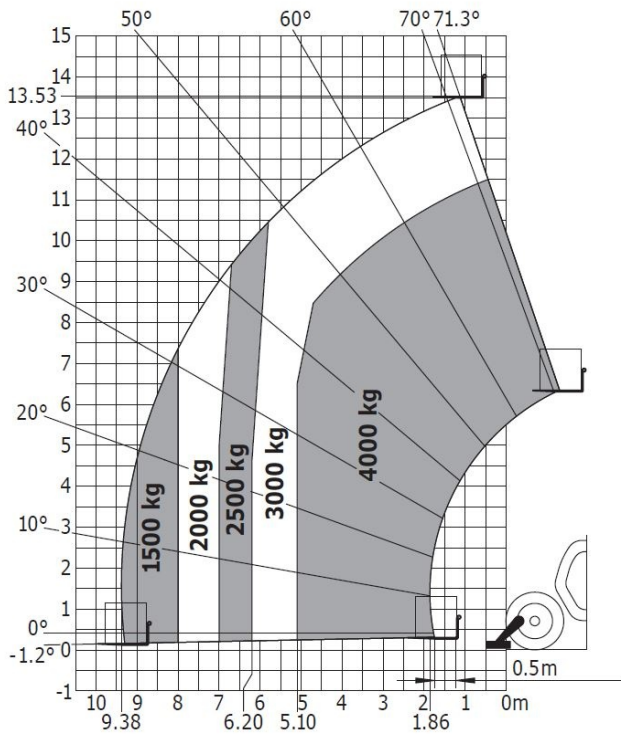
Capacities		Metryczny	Imperialny
Max. capacity	Q	4000 kg	8818 lbs
Max. lifting height	h3	13.53 m	44 ft 5 in
Max. Reach	l4	9.38 m	30 ft 9 in
Breakout force with bucket		7895 daN	7895 daN
Weight and dimensions			
Overall length to carriage	l11	6.13 m	20 ft 1 in
Overall width	b1	2.37 m	7 ft 9 in
Overall height	h17	2.45 m	8 ft
Wheelbase	y	3.07 m	10 ft 1 in
Ground clearance	m4	0.37 m	1 ft 3 in
Overall cab width	b4	0.89 m	2 ft 11 in
Tilt-up angle	a4	12 °	12 °
Tilt-down angle	a5	353 °	353 °
External turning radius (over tyres)	Wa1	3.97 m	13 ft
Unladen weight (with forks)		10940 kg	24119 lbs
Tyres type		Pneumatic	Pneumatic
Standard tyres		Alliance 400/80 - 24 - 162A8	Alliance 400/80 - 24 - 162A8
Forks length / width / section	l / e / s	1200 mm x 125 mm x 50 mm	47.244 in x 4.921 in x 1.969 in
Performances			
Lifting		15.9 s	15.9 s
Lowering		12.1 s	12.1 s
Extension		17.1 s	17.1 s
Retraction		12.7 s	12.7 s
Dump		3.9 s	3.9 s
Engine			
Engine brand		Perkins	Perkins
Engine norm		Stage IV / Tier 4 Final	Stage IV / Tier 4 Final
Engine model		854F-E34TAN	854F-E34TAN
Number of cylinders / Capacity of cylinders		4 - 3400 cm ³	4 - 207.48 in ³
I.C. Engine power rating - Power (kW)		100 Hp / 75 kW	100 Hp / 75 kW
Max. torque / Engine rotation		430 Nm @ 1400 tr/min	430 Nm @ 1400 tr/min
Drawbar pull (Laden)		8090 daN	8090 daN
Transmission			
Transmission type		Torque Converter	Torque Converter
Number of gears (forward / reverse)		4 / 4	4 / 4
Travel speed (laden)		27 km/h	16.8 mph
Max. travel speed (may vary according to applicable regulations)		24.9 km/h	15.5 mph
Parking brake		Automatic Negative Hand-brake	Automatic Negative Hand-brake
Service brake		Oil-immersed multi-discs braking on front & rear axles	Oil-immersed multi-discs braking on front & rear axles
Hydraulics			
Hydraulic pump type		Gear Pump	Gear Pump
Hydraulic flow / Pressure		170 l/min / 270 Bar	170 l/min / 19 PSI
Tank capacities			
Engine oil		7.50 l	1.65 gal
Hydraulic oil		135 l	29.70 gal
Fuel tank		140 l	30.80 gal
DEF tank capacity		12 l	2.64 gal
Noise and vibration			
Noise at driving position (LpA)		78 dB(A)	78 dB(A)
Noise to environment (LwA)		103 dB(A)	103 dB(A)
Vibration on hands/arms		2.5 Nm	8.2 ft/s
Miscellaneous			
Steering wheels (front / rear)		2 / 2	2 / 2
Drive wheels (front / rear)		2 / 2	2 / 2
Safety / Safety cabin homologation		Standard EN 15000 / Cab ROPS - FOPS Level 2	Standard EN 15000 / Cab ROPS - FOPS Level 2
Controls		JSM	JSM

Rysunek wymiarowy



Wykresy obciążenia

Machine on stabilizers with forks Metric



Machine on tyres with forks Metric

