

Machine for Industrial Applications **A 924 C HD**

Litronic®

Operating Weight: 31,550 – 33,450 kg
Engine Output: 135 kW / 184 HP



LIEBHERR

Courtesy of Crane.Market

Technical Data



Engine

Rating per ISO 9249	135 kW (184 HP) at 1,800 RPM
Model	Liebherr D 934 L according to level IIIA/Tier 3
Type	4 cylinder in-line
Bore/Stroke	122/150 mm
Displacement	7,0 l
Engine operation	4-stroke diesel unit pump system turbo-charged and after-cooled reduced emissions
Cooling system	water-cooled and integrated motor oil cooler
Air cleaner	dry-type air cleaner with pre-cleaner, primary and safety elements
Fuel tank	400 l
Engine idling	sensor controlled
Electrical system	
Voltage	24 V
Batteries	2 x 135 Ah/12 V
Alternator	three phase current 28 V/80 A
Option	Liebherr particle filter



Hydraulic System

Hydraulic pump	Liebherr, variable displacement, swashplate double pump
Max. flow	2 x 215 l/min.
Max. hydr. pressure	350 bar
Hydraulic pump regulation and control	Liebherr-Synchron-Comfort-system (LSC) with electronic engine speed sensing regulation, pressure and flow compensation, load sensing and torque controlled swing drive priority
Hydraulic tank capacity	250 l
Hydraulic system capacity	max. 430 l
Filtration	one main return filter with integrated partial micro filtration (5 µm)
Cooling system	compact cooler, consisting of a water cooler, sandwiched with hydraulic oil cooler, fuel cooler and after-cooler cores and hydrostatically driven fan
Modes	can also be adjusted by the operator to adjust engine and hydraulic performance to match job conditions (Note: All modes provide full max. power)
LIFT	for precise lifting tasks
FINE	for precision work at high speed i.e. grading
ECO	for most economic performance at best environmental conditions
POWER	for max. output
Super-Finish	additional operator adjustable work speed function for further increased feathering. Applies to all modes and all control functions
RPM adjustment	stepless adjustment of engine output via rpm
Tool Control (Option)	ten preadjustable pump flows and pressures for add on tools



Hydraulic Controls

Power distribution	via control valve with integrated safety valves, simultaneous and independent operation of travel drive, swing drive and work
Control type	
Attachment and swing	proportional via joystick levers
Travel	proportional via foot pedal
Additional functions	via switch and/or proportional foot pedals



Swing Drive

Drive	Swashplate motor with torque control and integrated brake valve
Transmission	Liebherr compact planetary reduction gear
Swing ring	Liebherr sealed single race ball bearing swing ring, internal teeth
Swing speed	0 – 8.0 min ⁻¹ stepless
Swing torque	74 kNm
Holding brake	wet discs (spring applied – pressure released)
Option	pedal controlled positioning brake



Operator's Cab

Cab	resiliently mounted, sound insulated, tinted windows, front window stores overhead, door with sliding window
Operator's seat	fully adjustable, shockabsorbing suspension, adjustable to operator's weight and size, 6-way adjustable Liebherr seat
Joysticks	integrated into adjustable seat consoles
Monitoring	menu driven query of current operating conditions via the LCD display. Automatic monitoring, display, warning (acoustical and optical signal) and saving machine data, for example, engine overheating, low engine oil pressure or low hydraulic oil level
Air conditioning	standard air conditioning, combined cooler/heater, additional dust filter in fresh air/recirculated
Noise emission	
ISO 6396	L _{PA} (inside cab) = 74 dB(A)
2000/14/EC	L _{WA} (surround noise) = 103 dB(A)



Undercarriage

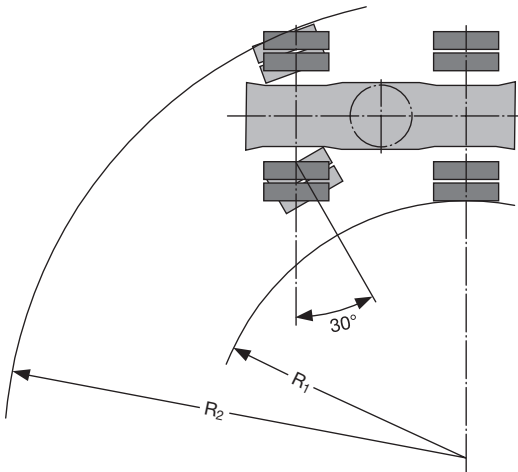
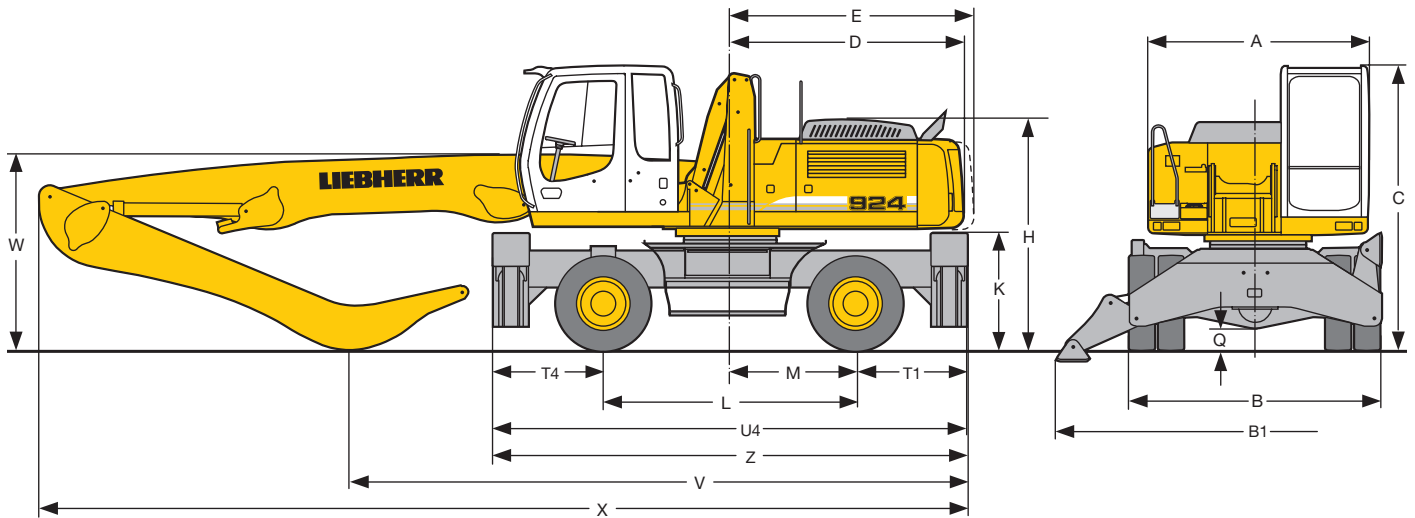
Drive	Liebherr variable flow swashplate motor with automatic brake valves
Transmission	oversized two speed power shift transmission with additional creeper speeds
Travel speed	0 – 2.5 km/h (creeper speed) 0 – 5.0 km/h (cross country) 0 – 10.0 km/h (creeper speed road) 0 – 20.0 km/h (road travel)
Axles	60 t excavator axles; automatic or operator controlled front axle oscillation lock
Service and holding brakes	multiple wet discs
Parking brake	multiple wet discs (spring applied – pressure released)
Stabilization	4-point outriggers with suspended rocker arm supports



Attachment

Type	high-strength steel plates at highly-stressed points for the toughest requirements. Complex and stable mountings of attachment and cylinders. Unrivalled strength, even at high loads
Hydraulic cylinders	Liebherr cylinders with special seal system. Shock absorption
Pivots	sealed, low maintenance
Lubrication	Liebherr semi-automatic central lubrication system

Dimensions



	mm
A	2,610
B	2,990
B1	4,700
C	3,330
D	2,820
E	2,885
H	2,695
K	1,410
L	3,000
M	500
Q	255
R1	5,470
R2	9,020
T1	1,310
T4	1,310
U4	5,620
Z	5,895

E = Tail radius

Tires 12.00-20

Industrial-Type Straight Boom 6.80 m and Industrial Stick			
	m	5.00	6.00
V	mm	6,600	5,850
W	mm	2,850	3,750
X	mm	10,150	10,000

Industrial-Type Straight Boom 7.80 m and Industrial Stick			
	m	5.00	6.00
V	mm	7,300	6,700
W	mm	2,450	3,350
X	mm	11,100	11,100

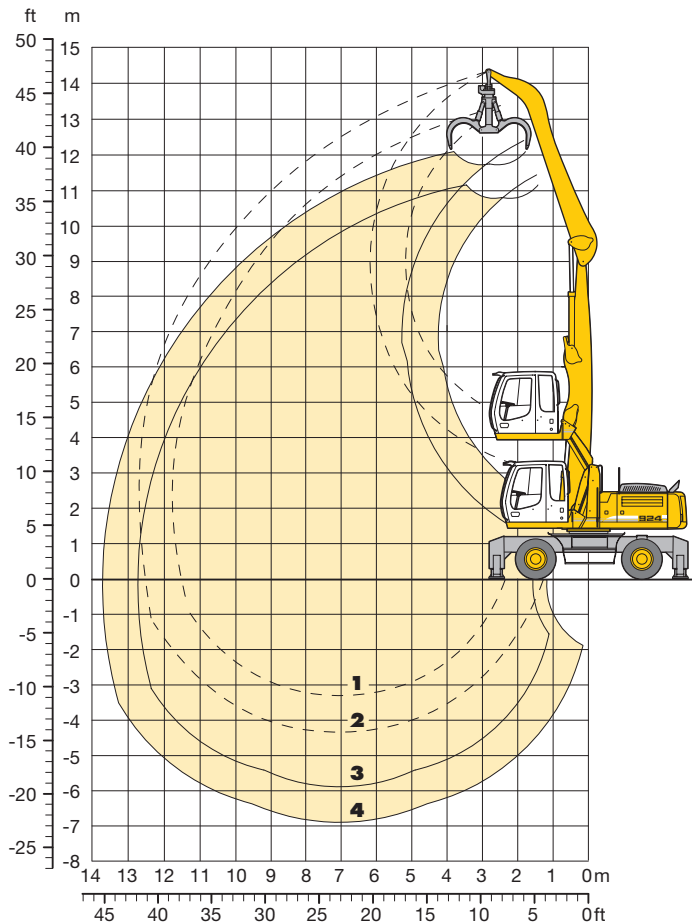
Industrial-Type Gooseneck Boom 6.50 m and Industrial Stick			
	m	4.00	5.00
V	mm	6,900	6,300
W	mm	2,850	3,400
X	mm	9,800	9,800

Industrial-Type Straight Boom 7.80 m and Industrial Stick with Tipping Kinematics			
	m	5.00	
V	mm	6,550	
W	mm	2,600	
X	mm	11,100	

Dimensions are with attachment over steering axle

Industrial Attachment

for Scrap Handling with Straight Boom 6.80 m



Attachment Envelope

Industrial-type straight boom pinned in rear bearing of boom foot bracket

- 1 with industrial stick 5.00 m
- 2 with industrial stick 6.00 m
- 3 with industrial stick 5.00 m and grapple model 65
- 4 with industrial stick 6.00 m and grapple model 65

Operating Weight

Operating weight includes basic machine A 924 C HD Litronic with 4 pt. outriggers, hydr. cab elevation, 8 solid tires plus spacer rings, and industrial attachment with industrial-type straight boom 6.80 m.

with grapple model 65/0.60 m ³ semi-closed tines and industrial stick 5.00 m and industrial stick 6.00 m	Weight
and industrial stick 5.00 m	32,600 kg
and industrial stick 6.00 m	32,700 kg

Lift Capacities

for Scrap Handling with Straight Boom 6.80 m

Industrial Stick 5.00 m

m	Undercarriage	3.0 m		4.5 m		6.0 m		7.5 m		9.0 m		10.5 m		12.0 m		13.5 m		m		
15.0	Stabilizers raised 4 pt. outriggers down																			
13.5	Stabilizers raised 4 pt. outriggers down																			
12.0	Stabilizers raised 4 pt. outriggers down			8.4*	8.4*	6.1*	6.1*										6.0*	6.0*	6.04	
10.5	Stabilizers raised 4 pt. outriggers down					7.7	8.1*	5.4	6.3*								4.7	5.0*	8.06	
9.0	Stabilizers raised 4 pt. outriggers down					7.8	7.9*	5.5	6.9	4.0	5.1						3.7	4.5*	9.40	
7.5	Stabilizers raised 4 pt. outriggers down					7.7	8.0*	5.4	6.9	4.0	5.1						3.1	4.0	10.36	
6.0	Stabilizers raised 4 pt. outriggers down			10.0*	10.0*	7.5	8.4*	5.3	6.7	4.0	5.1	3.1	3.9				2.8	3.6	11.02	
4.5	Stabilizers raised 4 pt. outriggers down	10.2*	10.2*	10.9	11.5*	7.1	8.9*	5.1	6.5	3.9	4.9	3.0	3.9				2.6	3.4	11.45	
3.0	Stabilizers raised 4 pt. outriggers down	11.8*	11.8*	10.0	12.8*	6.6	8.6	4.8	6.2	3.7	4.8	2.9	3.8				2.5	3.2	11.67	
1.5	Stabilizers raised 4 pt. outriggers down	2.2*	2.2*	9.1	12.4	6.2	8.2	4.6	6.0	3.6	4.6	2.9	3.7				2.5	3.2	11.69	
0	Stabilizers raised 4 pt. outriggers down	2.8*	2.8*	8.6	9.0*	5.9	7.8	4.4	5.8	3.5	4.5	2.8	3.7				2.5	3.3	11.51	
-1.5	Stabilizers raised 4 pt. outriggers down			8.4	8.6*	5.7	7.7	4.3	5.7	3.4	4.4	2.8	3.6*				2.7	3.2*	10.83	
-3.0	Stabilizers raised 4 pt. outriggers down			8.6*	8.6*	5.7	6.4*	4.3	5.1*	5.0*	5.0*	3.6*	3.6*				3.6	4.2*	8.56	

Industrial Stick 6.00 m

m	Undercarriage	3.0 m		4.5 m		6.0 m		7.5 m		9.0 m		10.5 m		12.0 m		13.5 m		m			
15.0	Stabilizers raised 4 pt. outriggers down																				
13.5	Stabilizers raised 4 pt. outriggers down			7.0*	7.0*													5.8*	5.8*	5.29	
12.0	Stabilizers raised 4 pt. outriggers down					6.8*	6.8*	5.1*	5.1*									4.5*	4.5*	7.82	
10.5	Stabilizers raised 4 pt. outriggers down					7.3*	7.3*	5.6	6.5*	4.1	4.9*							3.7	3.9*	9.45	
9.0	Stabilizers raised 4 pt. outriggers down							5.7	6.4*	4.2	5.3	3.2	4.0*					3.1	3.6*	10.62	
7.5	Stabilizers raised 4 pt. outriggers down					7.3*	7.3*	5.6	6.4*	4.2	5.3	3.2	4.1					2.7	3.5	11.47	
6.0	Stabilizers raised 4 pt. outriggers down					7.6*	7.6*	5.5	6.6*	4.1	5.2	3.2	4.0	2.5	3.2			2.4	3.2	12.08	
4.5	Stabilizers raised 4 pt. outriggers down			8.1*	8.1*	7.4	8.3*	5.3	6.7	4.0	5.0	3.1	3.9	2.4	3.2			2.3	3.0	12.47	
3.0	Stabilizers raised 4 pt. outriggers down	11.1*	11.1*	10.6	11.7*	6.9	9.0	5.0	6.4	3.8	4.9	3.0	3.8	2.4	3.1			2.2	2.9	12.67	
1.5	Stabilizers raised 4 pt. outriggers down	5.3*	5.3*	9.5	12.9	6.4	8.4	4.7	6.1	3.6	4.7	2.9	3.7	2.3	3.1			2.1	2.8	12.68	
0	Stabilizers raised 4 pt. outriggers down	3.4*	3.4*	8.7	12.0	6.0	7.9	4.4	5.8	3.5	4.5	2.8	3.6	2.3	3.0			2.2	2.9	12.52	
-1.5	Stabilizers raised 4 pt. outriggers down	4.0*	4.0*	8.3	9.1*	5.7	7.6	4.2	5.6	3.3	4.4	2.7	3.6	2.3	2.8*			2.3	2.7*	12.07	
-3.0	Stabilizers raised 4 pt. outriggers down			8.2	9.2*	5.6	7.5	4.2	5.5	3.3	4.3	2.7	3.3*					2.6	3.1*	10.69	

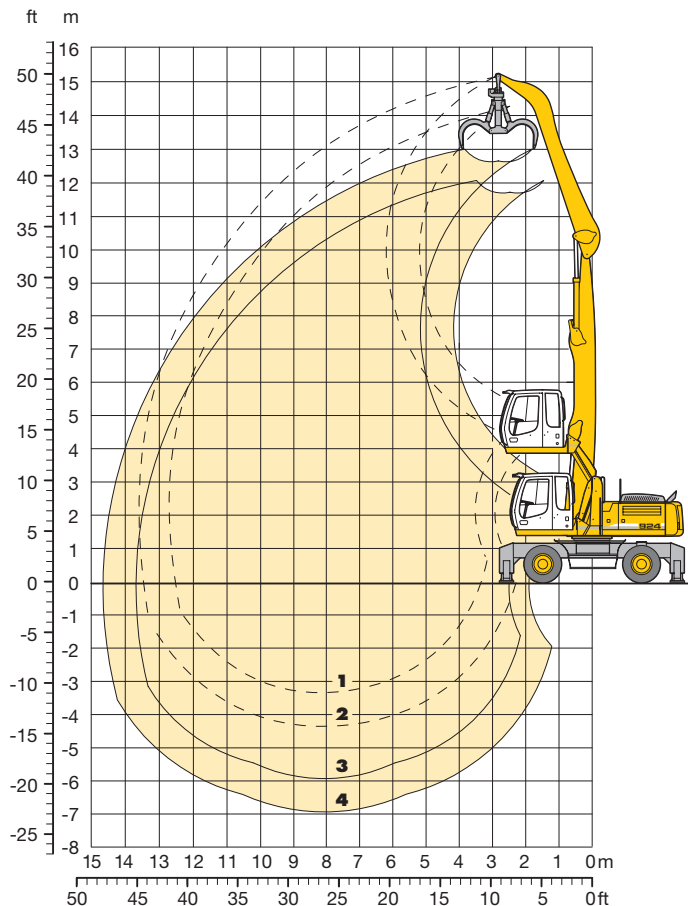
Height Can be slewed through 360° In longitudinal position of undercarriage Max. reach * Limited by hydr. capacity

The lift capacities on the stick end without attachment are stated in metric tons (t) and are valid on a firm, level supporting surface with blocked oscillating axle. These capacities can be slewed through 360° with the undercarriage in the transverse position. Capacities in the longitudinal position of the undercarriage (+/- 15°) are specified over the steering axle with the stabilisers raised and over the rigid axle with the stabilisers down. Indicated loads comply with the ISO 10567 standard and do not exceed 75% of tipping or 87% of hydraulic capacity.

In accordance with the harmonised EU Standard EN 474-5, hydraulic excavators used for lifting operations must be equipped with pipe rupture protection devices on the hoist cylinders and an overload warning device.

Industrial Attachment

for Scrap Handling with Straight Boom 7.80 m



Attachment Envelope

Industrial-type straight boom pinned in rear bearing of boom foot bracket

- 1 with industrial stick 5.00 m
- 2 with industrial stick 6.00 m
- 3 with industrial stick 5.00 m and grapple model 65
- 4 with industrial stick 6.00 m and grapple model 65

Operating Weight

Operating weight includes basic machine A 924 C HD Litronic with 4 pt. outriggers, hydr. cab elevation, 8 solid tires plus spacer rings, and industrial attachment with industrial-type straight boom 7.80 m.

with grapple model 65/0.60 m ³ semi-closed tines and industrial stick 5.00 m	Weight
and industrial stick 5.00 m	32,800 kg
and industrial stick 6.00 m	32,900 kg

Lift Capacities

for Scrap Handling with Straight Boom 7.80 m

Industrial Stick 5.00 m

m	Undercarriage	3.0 m		4.5 m		6.0 m		7.5 m		9.0 m		10.5 m		12.0 m		13.5 m		m		
15.0	Stabilizers raised 4 pt. outriggers down																			
13.5	Stabilizers raised 4 pt. outriggers down			7.9*	7.9*													6.7*	6.7*	5.26
12.0	Stabilizers raised 4 pt. outriggers down					7.7	7.9*	5.3	6.0*									4.9	5.3*	7.80
10.5	Stabilizers raised 4 pt. outriggers down					7.8	7.8*	5.5	6.7*	4.0	5.1							3.6	4.6	9.43
9.0	Stabilizers raised 4 pt. outriggers down					7.8	7.8*	5.5	6.7*	4.0	5.1	3.0	3.9					3.0	3.8	10.61
7.5	Stabilizers raised 4 pt. outriggers down					7.8	7.8*	6.7*	6.7*	5.8*	5.8*	4.8*	4.8*					4.4*	4.4*	11.46
6.0	Stabilizers raised 4 pt. outriggers down			10.8*	10.8*	7.2	8.5*	5.1	6.6	3.9	4.9	3.0	3.9	2.3	3.1			2.3	3.0	12.06
4.5	Stabilizers raised 4 pt. outriggers down	18.3*	18.3*	10.2	12.0*	6.7	8.7	4.8	6.3	3.7	4.8	2.9	3.8	2.3	3.0			2.2	2.8	12.45
3.0	Stabilizers raised 4 pt. outriggers down			9.0	12.3	6.2	8.1	4.5	5.9	3.5	4.6	2.8	3.7	2.3	3.0			2.1	2.7	12.65
1.5	Stabilizers raised 4 pt. outriggers down			4.7*	4.7*	5.7	7.6	4.3	5.6	3.3	4.4	2.7	3.5	2.2	2.9			2.0	2.7	12.67
0	Stabilizers raised 4 pt. outriggers down			4.3*	4.3*	5.4	7.3	4.1	5.4	3.2	4.3	2.6	3.5	2.2	2.9			2.1	2.7	12.50
-1.5	Stabilizers raised 4 pt. outriggers down			5.2*	5.2*	5.3	7.2	3.9	5.3	3.1	4.2	2.6	3.4	3.8*	3.8*			2.2	2.6*	11.87
-3.0	Stabilizers raised 4 pt. outriggers down							3.9	4.7*	3.1	3.8*							2.8	3.3*	9.72

Industrial Stick 6.00 m

m	Undercarriage	3.0 m		4.5 m		6.0 m		7.5 m		9.0 m		10.5 m		12.0 m		13.5 m		m		
15.0	Stabilizers raised 4 pt. outriggers down																	7.0*	7.0*	4.03
13.5	Stabilizers raised 4 pt. outriggers down					6.6*	6.6*											4.8*	4.8*	7.37
12.0	Stabilizers raised 4 pt. outriggers down					7.2*	7.2*	5.6	6.4*	4.0	4.8*							3.7	4.1*	9.34
10.5	Stabilizers raised 4 pt. outriggers down							5.7	6.3*	4.2	5.3	3.1	4.0					3.0	3.7*	10.74
9.0	Stabilizers raised 4 pt. outriggers down							5.7	6.3*	4.2	5.3	3.2	4.1					2.5	3.2	11.78
7.5	Stabilizers raised 4 pt. outriggers down					7.4*	7.4*	5.6	6.4*	4.1	5.2	3.1	4.0	2.4	3.2			2.2	2.9	12.55
6.0	Stabilizers raised 4 pt. outriggers down					7.6	7.9*	5.3	6.6*	4.0	5.1	3.1	3.9	2.4	3.1			2.0	2.7	13.10
4.5	Stabilizers raised 4 pt. outriggers down	7.0*	7.0*	10.3*	10.3*	7.1	8.5*	5.0	6.5	3.8	4.9	2.9	3.8	2.3	3.1			1.9	2.5	13.46
3.0	Stabilizers raised 4 pt. outriggers down	5.6*	5.6*	9.7	12.2*	6.4	8.5	4.7	6.1	3.6	4.7	2.8	3.7	2.3	3.0	1.8	2.5	1.8	2.4	13.65
1.5	Stabilizers raised 4 pt. outriggers down	1.0*	1.0*	8.6	8.6*	5.9	7.8	4.3	5.7	3.4	4.4	2.7	3.5	2.2	2.9	1.8	2.4	1.8	2.4	13.66
0	Stabilizers raised 4 pt. outriggers down	1.6*	1.6*	5.2*	5.2*	5.4	7.4	4.1	5.4	3.2	4.3	2.6	3.4	2.1	2.8	1.8	2.4	1.8	2.4	13.51
-1.5	Stabilizers raised 4 pt. outriggers down	2.6*	2.6*	5.3*	5.3*	5.2	7.1	3.9	5.3	3.1	4.1	2.5	3.4	2.1	2.8			1.9	2.3*	13.11
-3.0	Stabilizers raised 4 pt. outriggers down			6.0*	6.0*	5.1	6.7*	3.8	5.2	3.0	4.1	2.5	3.3					2.1	2.6*	11.75

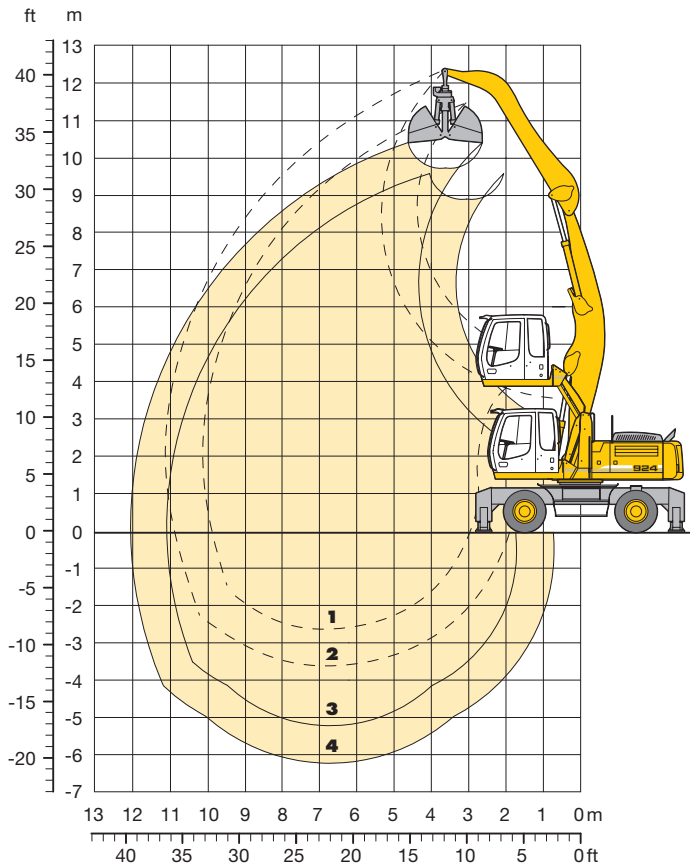
Height Can be slewed through 360° In longitudinal position of undercarriage Max. reach * Limited by hydr. capacity

The lift capacities on the stick end without attachment are stated in metric tons (t) and are valid on a firm, level supporting surface with blocked oscillating axle. These capacities can be slewed through 360° with the undercarriage in the transverse position. Capacities in the longitudinal position of the undercarriage (+/- 15°) are specified over the steering axle with the stabilisers raised and over the rigid axle with the stabilisers down. Indicated loads comply with the ISO 10567 standard and do not exceed 75% of tipping or 87% of hydraulic capacity.

In accordance with the harmonised EU Standard EN 474-5, hydraulic excavators used for lifting operations must be equipped with pipe rupture protection devices on the hoist cylinders and an overload warning device.

Industrial Attachment

for Loose Material with Gooseneck Boom 6.50 m



Attachment Envelope

Industrial-type gooseneck boom pinned in rear bearing of boom foot bracket

- 1 with industrial stick 4.00 m
- 2 with industrial stick 5.00 m
- 3 with industrial stick 4.00 m and clamshell model 20 B
- 4 with industrial stick 5.00 m and clamshell model 20 B

Operating Weight

Operating weight includes basic machine A 924 C HD Litronic with 4 pt. outriggers, hydr. cab elevation, 8 tires plus spacer rings and industrial attachment with industrial-type gooseneck boom 6.50 m.

with clamshell model 20 B/1.30 m ³ shells for loose material and industrial stick 4.00 m	Weight
and industrial stick 4.00 m	31,550 kg
and industrial stick 5.00 m	31,750 kg

Lift Capacities

for Loose Material with Gooseneck Boom 6.50 m

Industrial Stick 4.00 m

m	Undercarriage	3.0 m		4.5 m		6.0 m		7.5 m		9.0 m		10.5 m		12.0 m		13.5 m		m		
15.0	Stabilizers raised 4 pt. outriggers down																			
13.5	Stabilizers raised 4 pt. outriggers down																			
12.0	Stabilizers raised 4 pt. outriggers down																			
10.5	Stabilizers raised 4 pt. outriggers down			8.2*	8.2*												6.5*	6.5*	5.39	
9.0	Stabilizers raised 4 pt. outriggers down			9.4*	9.4*	7.5	8.0*										5.5	5.7*	7.27	
7.5	Stabilizers raised 4 pt. outriggers down			9.5*	9.5*	7.4	8.0*	5.2	6.6								4.3	5.4	8.48	
6.0	Stabilizers raised 4 pt. outriggers down			10.3*	10.3*	7.2	8.4*	5.1	6.5	3.8	4.9						3.6	4.6	9.28	
4.5	Stabilizers raised 4 pt. outriggers down	16.9*	16.9*	10.5	11.6*	6.9	8.8	4.9	6.3	3.7	4.8						3.3	4.2	9.79	
3.0	Stabilizers raised 4 pt. outriggers down	5.9*	5.9*	9.6	12.8	6.4	8.4	4.7	6.1	3.6	4.7						3.1	4.0	10.04	
1.5	Stabilizers raised 4 pt. outriggers down	3.1*	3.1*	8.8	12.0	6.0	8.0	4.5	5.8	3.5	4.5						3.0	3.9	10.06	
0	Stabilizers raised 4 pt. outriggers down	4.6*	4.6*	8.4	11.1*	5.8	7.7	4.3	5.7	3.4	4.4						3.0	3.9	9.85	
-1.5	Stabilizers raised 4 pt. outriggers down			8.3	10.4*	5.7	7.6	4.3	5.6	3.4	4.4						3.2	4.2	9.39	
-3.0	Stabilizers raised 4 pt. outriggers down			10.4*	10.4*	8.2*	8.2*	6.5*	6.5*	4.8*	4.8*						4.4*	4.4*		

Industrial Stick 5,00 m

m	Undercarriage	3.0 m		4.5 m		6.0 m		7.5 m		9.0 m		10.5 m		12.0 m		13.5 m		m		
15.0	Stabilizers raised 4 pt. outriggers down																			
13.5	Stabilizers raised 4 pt. outriggers down																			
12.0	Stabilizers raised 4 pt. outriggers down			6.1*	6.1*												6.0*	6.0*	4.60	
10.5	Stabilizers raised 4 pt. outriggers down					6.5*	6.5*										4.8*	4.8*	7.06	
9.0	Stabilizers raised 4 pt. outriggers down					7.2*	7.2*	5.4	6.4*								4.3	4.4*	8.57	
7.5	Stabilizers raised 4 pt. outriggers down					7.2*	7.2*	5.4	6.5*	4.0	5.0						3.5	4.2*	9.61	
6.0	Stabilizers raised 4 pt. outriggers down					7.5	7.6*	5.3	6.7*	3.9	5.0						3.1	4.0	10.33	
4.5	Stabilizers raised 4 pt. outriggers down			10.3*	10.3*	7.1	8.3*	5.1	6.5	3.8	4.9	3.0	3.8				2.8	3.6	10.78	
3.0	Stabilizers raised 4 pt. outriggers down	18.2*	18.2*	10.1	11.9*	6.7	8.6	4.8	6.2	3.7	4.7	2.9	3.7				2.7	3.5	11.01	
1.5	Stabilizers raised 4 pt. outriggers down	5.9*	5.9*	9.1	12.4	6.2	8.1	4.6	5.9	3.5	4.6	2.8	3.6				2.6	3.4	11.03	
0	Stabilizers raised 4 pt. outriggers down	5.0*	5.0*	8.5	11.7	5.8	7.7	4.3	5.7	3.4	4.4	2.7	3.6				2.6	3.4	10.84	
-1.5	Stabilizers raised 4 pt. outriggers down	5.8*	5.8*	8.2	11.3*	5.6	7.5	4.2	5.5	3.3	4.3						2.7	3.6	10.42	
-3.0	Stabilizers raised 4 pt. outriggers down			8.2	9.6*	5.5	7.4	4.1	5.5								3.3	4.3	8.96	

Height Can be slewed through 360° In longitudinal position of undercarriage Max. reach * Limited by hydr. capacity

The lift capacities on the stick end without attachment are stated in metric tons (t) and are valid on a firm, level supporting surface with blocked oscillating axle. These capacities can be slewed through 360° with the undercarriage in the transverse position. Capacities in the longitudinal position of the undercarriage (+/- 15°) are specified over the steering axle with the stabilisers raised and over the rigid axle with the stabilisers down. Indicated loads comply with the ISO 10567 standard and do not exceed 75% of tipping or 87% of hydraulic capacity.

In accordance with the harmonised EU Standard EN 474-5, hydraulic excavators used for lifting operations must be equipped with pipe rupture protection devices on the hoist cylinders and an overload warning device.

Industrial Attachment

for Recycling with Straight Boom 7.80 m

Attachment Envelope

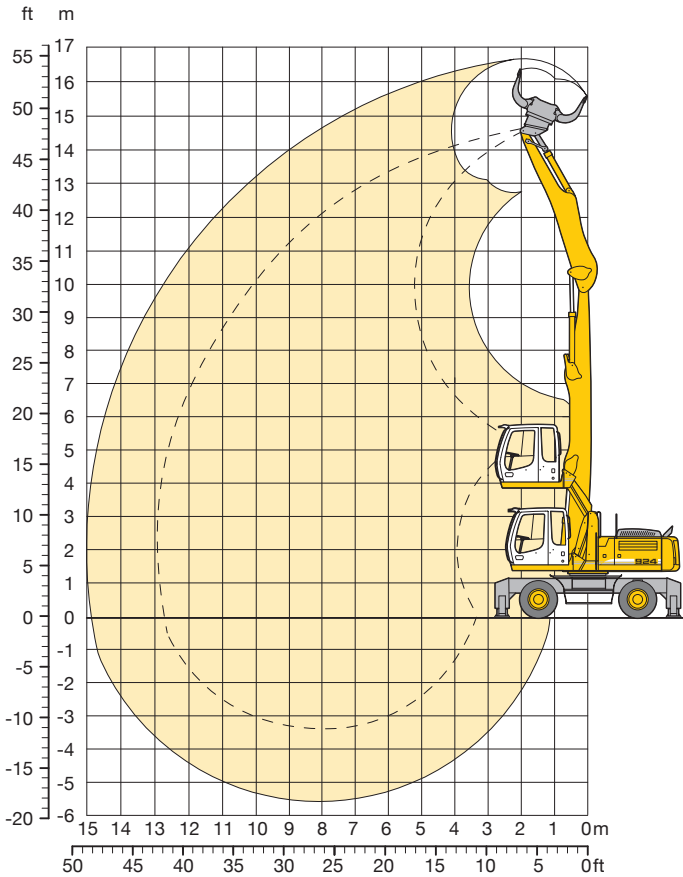
Industrial-type straight boom pinned in rear bearing of boom foot bracket

with industrial stick 5.00 m and Liebherr sorting grapple

Operating Weight

Operating weight includes basic machine A 924 C HD **Litronic** with 4 pt. outriggers, hydr. cab elevation, 8 solid tires plus spacer tires and industrial attachment with industrial-type straight boom 7.80 m.

with Liebherr sorting grapple SG 30/0.80 m ³ tines	Weight
and industrial stick with tipping kinematics 5.00 m	33,450 kg



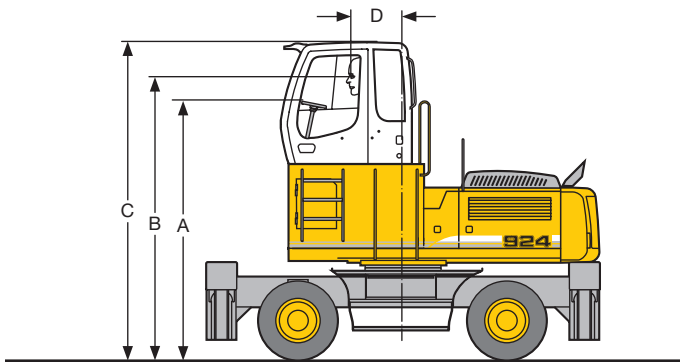
Industrial Stick 5.00 m

m	Undercarriage	3.0 m		4.5 m		6.0 m		7.5 m		9.0 m		10.5 m		12.0 m		13.5 m		m		
		Stabilizers raised	4 pt. outriggers down	Stabilizers raised	4 pt. outriggers down	Stabilizers raised	4 pt. outriggers down	Stabilizers raised	4 pt. outriggers down	Stabilizers raised	4 pt. outriggers down	Stabilizers raised	4 pt. outriggers down	Stabilizers raised	4 pt. outriggers down	Stabilizers raised	4 pt. outriggers down	Stabilizers raised	4 pt. outriggers down	Stabilizers raised
13.5	Stabilizers raised 4 pt. outriggers down			8.7*	8.7*													6.8*	6.8*	5.61
12.0	Stabilizers raised 4 pt. outriggers down					7.4	7.8*	5.0	6.5									4.4	5.2*	8.04
10.5	Stabilizers raised 4 pt. outriggers down					7.5*	7.5*	5.2	6.4*	3.7	4.8							3.2	4.2	9.63
9.0	Stabilizers raised 4 pt. outriggers down					7.5	7.5*	5.2	6.4*	3.8	4.9	2.8	3.6					2.6	3.4	10.78
7.5	Stabilizers raised 4 pt. outriggers down					7.3	7.8*	5.1	6.5*	3.7	4.8	2.8	3.6					2.2	3.0	11.62
6.0	Stabilizers raised 4 pt. outriggers down			9.7*	9.7*	7.0	8.2*	4.9	6.3	3.6	4.7	2.7	3.6	2.1	2.8			2.0	2.7	12.22
4.5	Stabilizers raised 4 pt. outriggers down	18.0*	18.0*	9.9	11.6*	6.4	8.5	4.6	6.0	3.4	4.5	2.6	3.5	2.0	2.8			1.8	2.5	12.60
3.0	Stabilizers raised 4 pt. outriggers down	0.5*	0.5*	8.7	9.9*	5.9	7.9	4.3	5.7	3.2	4.3	2.5	3.4	2.0	2.7			1.8	2.4	12.80
1.5	Stabilizers raised 4 pt. outriggers down			3.1*	3.1*	5.4	7.3	4.0	5.3	3.0	4.1	2.4	3.3	1.9	2.6			1.7	2.4	12.82
0	Stabilizers raised 4 pt. outriggers down			3.1*	3.1*	8.9*	8.9*	6.9*	6.9*	5.5*	5.5*	4.5*	4.5*	3.5*	3.5*			1.8	2.3*	12.65
-1.5	Stabilizers raised 4 pt. outriggers down			4.3*	4.3*	4.9	6.8	3.6	5.0	2.8	3.9	2.3	3.1					1.9	2.3*	11.87
-3.0	Stabilizers raised 4 pt. outriggers down							3.6	4.4*	2.8	3.4*							2.5	3.0*	9.72

↑ Height 🛠️ Can be slewed through 360° 📏 In longitudinal position of undercarriage 🚧 Max. reach * Limited by hydr. capacity

The lift capacities on the stick end without attachment are stated in metric tons (t) and are valid on a firm, level supporting surface with blocked oscillating axle. These capacities can be slewed through 360° with the undercarriage in the transverse position. Capacities in the longitudinal position of the undercarriage (+/- 15°) are specified over the steering axle with the stabilisers raised and over the rigid axle with the stabilisers down. Indicated loads comply with the ISO 10567 standard and do not exceed 75 % of tipping or 87 % of hydraulic capacity. In accordance with the harmonised EU Standard EN 474-5, hydraulic excavators used for lifting operations must be equipped with pipe rupture protection devices on the hoist cylinders and an overload warning device.

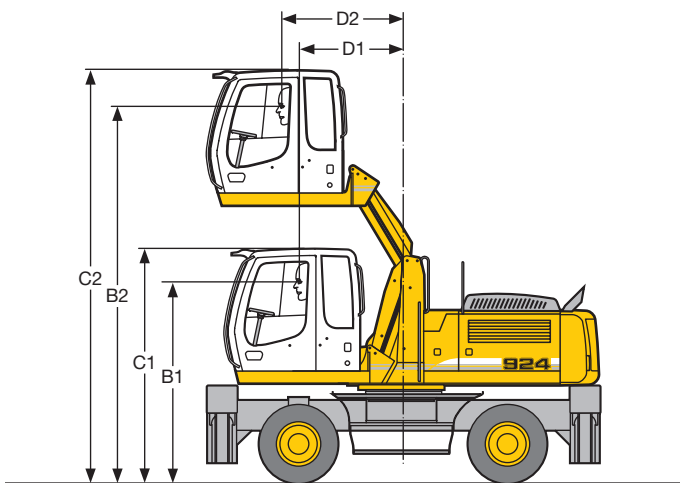
Choice of Cab Elevations and Cab Protections



Rigid Cab Elevation

Height	mm	800	1,200	1,500
A	mm	3,295	3,695	3,995
B	mm	3,635	4,035	4,335
C	mm	4,135	4,535	4,835
D	mm	870	870	870

A rigid cab elevation has a fixed eye level height. For a lower transport height the shell of the cab can be removed. The overall height is then dimension A.

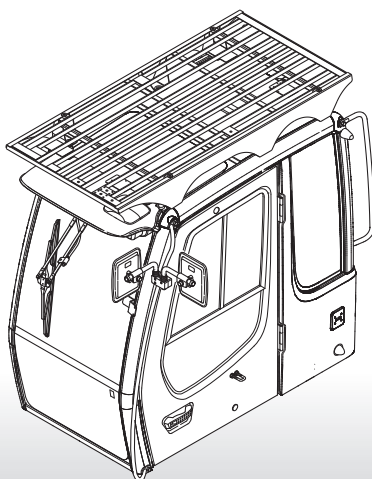


Hydraulic Cab Elevation (Parallelogram)

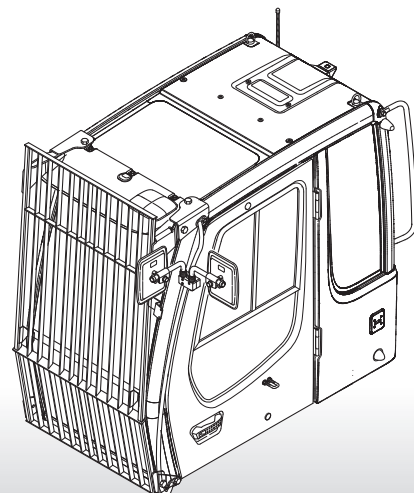
B1	2,830 mm
B2	5,335 mm
C1	3,330 mm
C2	5,835 mm
D1	1,460 mm
D2	1,700 mm
E	3,250 mm

The parallelogram cab raiser allows the operator to choose his field of view between dimensions B1 and B2. For a transport height lower than C1 the shell of the cab can be removed. The overall height is then E.

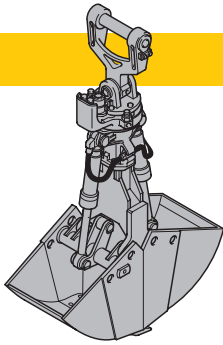
Grille above



Grilles in front



Variety of Tools

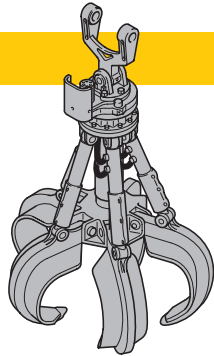


Shells for Loose Material

Clamshell Model 10 B

Shells for loose material with cutting edge (without teeth)

Cutting width of shells	mm	1,000	1,200	1,600
Capacity	m ³	1.30	1.50	2.00
For loose material, specific weight up to	t/m ³	1.5	1.5	1.5
Weight	kg	1,355	1,415	1,550



Multiple Tine Grapples

open tines

semi-closed tines

closed tines

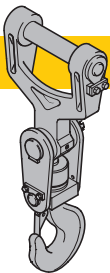
Grapple Model 64 (4 tines)	Capacity	m ³	0.40	0.60	0.40	0.60	0.40	0.60
	Weight	kg	845	1,130	1,055	1,330	1,060	1,520
Grapple Model 65 (5 tines)	Capacity	m ³	0.40	0.60	0.40	0.60	0.40	0.60
	Weight	kg	1,150	1,230	1,285	1,415	1,325	1,520



Wood Grapple

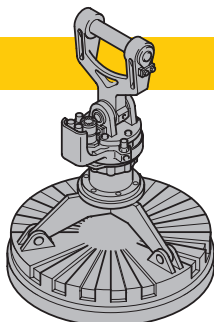
Grapple Model GM 20 B

Size	m ²	1.30	1.50	1.70	1.90
Width	mm	810	810	810	810
Opening width inside	mm	2,640	2,735	2,835	3,125
Opening width outside	mm	2,945	3,045	3,180	3,470
Overall height open	mm	2,325	2,355	2,380	2,460
Overall height closed	mm	2,950	3,005	3,060	3,155
Weight complete	kg	1,675	1,725	1,775	1,910



Crane Hook with Suspension

Max. load	t	12,5
Height with suspension	mm	930
Weight	kg	96



Magnet Devices/Lifting Magnets

Generator	kW	13	13
-----------	----	----	----

Electromagnets with Suspension

Power	kW	4.5	6
Diameter of magnet	mm	1,050	1,200
Height with suspension	mm	1,100	1,100
Weight	kg	750	1,190

Equipment



Undercarriage

Two circuit travel brake with accumulator	•
Travel motor protection	+
Outrigger cylinder rod guards	+
Creeper speed electrically switchable from cab	•
New tires	•
Service free parking brake	•
Independent outrigger control	+
Choice of tires	+
Auto check valve directly on each stabilizer cylinder	•
Proportional power steering	•
Customized colors	+
Two lockable storage boxes	•
Two-speed power shift transmission	•



Uppercarriage

Electric fuel tank filler pump	+
Maintenance-free swing brake lock	•
Handrails, Non slip surfaces	•
Main switch for electric circuit	•
Engine hood with lift help	•
Pedal controlled positioning swing brake	+
Reverse travel warning system	+
Sound insulation	•
Customized colors	+
Maintenance-free HD-batteries	•
Extended tool kit	+
Lockable tool box	•
Tool kit	•



Hydraulics

Hydraulic tank shut-off valve	•
Extra hydr. control for hydr. swivel	•
Pressure compensation	•
Hook up for pressure checks	•
Pressure storage for controlled lowering of attachments with engine turned off	•
Filter with partial micro filtration (5 µm)	•
Electronic pump regulation	•
Stepless mode system (ECO)	•
Flow compensation	•
Four mixed modes, can also be adjusted	•
Full flow micro filtration	+
Bio degradable hydraulic oil	+
Tool Control	+
Additional hydraulic circuits	+



Engine

Turbo charger	•
After-cooled	•
Sensor controlled engine idling	•
Liebherr particle filter	+
Unit pump system	•
Air filter with pre-cleaner main- and safety element	•



Operator's Cab

Storage tray	•
Displays for engine operating condition	•
Mechanical hour meters, readable from outside the cab	•
Roof hatch	•
6-way adjustable seat	•
Airpressure operator seat with heating and head-rest	+
Seat and consoles independently adjustable	•
Extinguisher	+
Removable customized foot mat	•
Dome light	•
Hydraulic cab elevation	+
Rigid cab elevation	+
Cab heater with defroster	•
Cloth hook	•
Air conditioning	•
Electric cool box	+
Steering wheel adjustable	•
Bullet proof window (fixed installation – can not be opened)	+
Stereo radio	+
Preparation for radio installation	+
Rain hood over front window opening	•
Beacon	+
All tinted windows	•
Door with sliding window	•
Optical warning if outriggers are not fully retracted	+
Auxiliary heating	+
Sun shade	+
Sun roller blind	•
Electronic drive away lock	+
Wiper/washer	•
Cigarette lighter and ashtray	•
Additional flood lights	+



Attachment

Flood lights	•
Hydr. lines for clam operation in sticks	•
Industrial-type gooseneck sticks with remote hydraulic pin puller	+
Sealed pivots	•
Safety lift hook	+
Liebherr line of clams	+
Liebherr semi-automatic central lubrication system	•
Liebherr fully-automatic central lubrication system	+
Likufix	+
Safety check valves on hoist cylinder	•
Safety check valves on stick cylinder	•
Hose quick connection	•
Hydraulic or manual quick change tool adapter	+
Customized colors	+
Special buckets and other tools	+
Overload warning device	+
Two way valves for bucket/clam use	+
Locking of connections for clam operation	+
Cylinders with shock absorber	•

• = Standard, + = Option

Options and/or special attachments, supplied by vendors other than Liebherr, are only to be installed with the knowledge and approval of Liebherr to retain warranty.

All illustrations and data may differ from standard equipment. Subject to change without notice.

The Liebherr Group of Companies

Wide product range

The Liebherr Group is one of the largest construction equipment manufacturers in the world. Liebherr's high-value products and services enjoy a high reputation in many other fields, too. The wide range includes domestic appliances, aerospace and transportation systems, machine tools and maritime cranes.

Exceptional customer benefit

Every product line provides a complete range of models in many different versions. With both their technical excellence and acknowledged quality, Liebherr products offer a maximum of customer benefits in practical application.

State-of-the-art technology

To provide consistent, top quality products, Liebherr attaches great importance to each product area, its components and core technologies. Important modules and components are developed and manufactured in-house, for instance the entire drive and control technology for construction equipment.

Worldwide and independent

Hans Liebherr founded the Liebherr family company in 1949. Since that time, the enterprise has steadily grown to a group of more than 100 companies with over 32,000 employees located on all continents. The corporate headquarters of the Group is Liebherr-International AG in Bulle, Switzerland. The Liebherr family is the sole owner of the company.

www.liebherr.com



Printed in Germany by Typodruck RG-BK-RP LHB/VF 10424677-2-03.10_enGB

Liebherr-Hydraulikbagger GmbH

Liebherrstraße 12, D-88457 Kirchdorf/Iller

☎ +49 7354 80-0, Fax +49 7354 80-7294

www.liebherr.com, E-Mail: info.lhb@liebherr.com

Courtesy of Crane.Market