

Wheeled Excavator

A 900 C
Litronic®

Operating Weight: 17,400 - 19,600 kg
Engine Output: 95 kW / 129 HP
Bucket Capacity: 0.32 - 0.95 m³



LIEBHERR

A 900 C

Litronic

Operating Weight: 17,400 - 19,600 kg
Engine Output: 95 kW / 129 HP
Bucket Capacity: 0.32 - 0.95 m³



Reliability

Liebherr hydraulic excavators have been designed and built to withstand the toughest of conditions at the building site. Their rugged design, high-tensile materials and individual components ensure maximum availability and long life-expectancy.

Performance

Liebherr wheel excavators have been designed for maximum productivity. Maximum digging performances, high lift capacities and quick working cycles are prerequisite for efficient building site operation, and a wide variety of attachments optimize every excavator application.

Comfort

Largely dimensioned and ergonomically designed, the Liebherr excavator cab features an operator's seat which can be individually adjusted, as well as clearly arranged control instruments and ideal all-round view. Automatic air-conditioning guarantees an optimum temperature in the Liebherr Feel-Good cab at all times.

Economy

The Liebherr-Litronic-System increases machine performance, reduces fuel consumption and minimises service and maintenance costs. Due to Liebherr's well-balanced range, the ideal machine can always be selected to suit every application.





Features

- High-tensile steel plates in high-stress areas for the toughest of applications
- Well-thought-out and secure bearings for attachments and cylinders
- Maximum resistance, even when lifting heavy loads



Reliability

Liebherr construction machinery is proven all over the world every day on the most diverse of building sites. Many years of experience as the world's largest manufacturer of rubber-tyre excavators, continuous development and the introduction of the latest technology are evident in every machine, guaranteeing absolute safety during applications. With its rugged design, and featuring Liebherr components, the Liebherr hydraulic excavators have been designed for extremely long life-expectancy.

Quality in detail

Liebherr components

Components such as engine, hydraulic cylinders, swing gear and electric parts have been specially designed, tested and manufactured by Liebherr for construction machinery. Parts including engines and pumps for example, are already being synchronized with each other as early as the construction phase, yielding a constant standard of quality.

Functional safety

Safety-orientated components, fitted as standard, allow high availability.

The operator can thus concentrate fully on the task at hand, due to the integrated on-board electronics performing a constant balancing of pre-defined set data.

Filtering of metallic filings by the magnetic rod, fitted in the hydraulic system as standard, increases life-expectancy of the hydraulic components and the oil.

Rugged attachments

Working attachment

The durable attachments have been designed for the toughest of applications. All components are optimised to the FEM methods and the hoist cylinders feature bearings on both sides.

Piping

The hydraulic lines are arranged optimally to safeguard against damage. The electric cabling is made with high-grade materials, thus guaranteeing a reliable supply to the consumer.

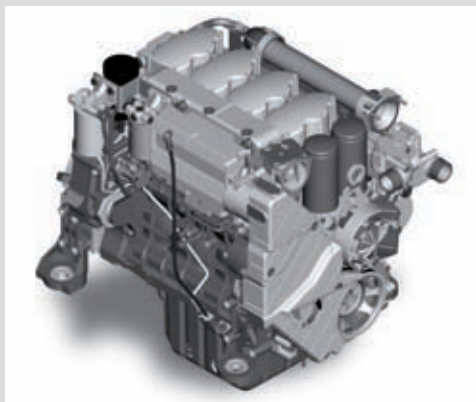
Liebherr hydraulic cylinders

- Specific size for each machine
- High-grade surface coating of the piston rods
- All Liebherr cylinders feature special long-life sealing systems
- Shock absorption at both sides in the working cylinders



Functional safety

- Essential operating data is stored and can be recalled at any time.
- Control and monitoring functions increase functional safety of the machine.
- Four fixed working modes for output discharge facilitate an effective and efficient operation:
 - Eco-Mode: for high output at big fuel savings
 - Power-Mode: for heavy-duty digging-and loading performance under severe conditions
 - Lift-Mode: for precise handling of heavy loads
 - Fine-Mode: for fine control at precision work



Liebherr diesel engine

- Long life-expectancy, expansive cylinder capacity and increased weight
- According to level IIIA / Tier 3
- Specially designed for construction machinery operation
- Oil supply even with extreme tilt angle



Performance

Liebherr wheel excavators have been designed for maximum productivity. Perfectly harmonized, the Liebherr-developed and Liebherr-manufactured components including diesel engine, hydraulic pump and motor, as well as swing gear and cylinders, guarantee maximum performance. Tremendous digging and breakout forces, extensive lifting capacities and quick working and travel movements are thus resulted.

Innovative solutions

Intelligent undercarriage

The entire travel drive unit is integrated in the sturdy undercarriage. Intelligently built and robust in service, the undercarriage offers the travel drive unit the best possible protection from debris, stones and soil. Its advantages are perfect all-terrain compatibility and extremely high ground clearance.

Multitude of attachments

Liebherr provide an individual, application-related range of diverse attachments. Hydraulic booms, adjustable both in height and offset positions, as well as standard and offset-adjustable goosenecks, can be combined with different sticks.

Extensive lifting capacities

Canalization and the lifting of pipes are everyday tasks for rubber-tyre excavators. These requirements are endorsed via an intelligent concept of uppercarriage sectioning together with the positioning of the Liebherr engine, mounted at a transversal angle directly in front of the counterweight. Separate hoist cylinder bearing points at the upper end of the basic boom also increase the lifting capacities considerably.

High productivity

Quick working cycles

High swing torque – attained as a result of the Liebherr swing ring featuring internal teeth and swing drive, specially designed to increase the torque.

Performance without compromise

Maximum performance and maximum forces are available to the operator at all times.

Rugged undercarriage

- Various undercarriage designs featuring welded, durable outriggers allow safe positioning, optimum stability, and long life-expectancy of the machine for every application.
- Prop-up blade / dozing blade in box-type design – only two bearing points for high torsional resistance
- Optional protection system for blade cylinders



Litronic

- Increases productivity of the excavator
- Reduces fuel consumption
- Reduces service costs and eases operation
- Allows maximum sensitivity and as many overlapping movements as are required



Large-sized cab

- Adjustable steering column
- Operator's seat, adjustable in height and can also be adapted to the individual weight of the operator.
- Consoles with or without possibility of horizontal adjustment.
- Large roof window
- Sun blinds





Comfort

The excavator operator is provided with an ergonomically-arranged working area within Liebherr hydraulic excavator cabs. All switches and functions are logically laid out, and operator's seat, steering column and consoles can be adjusted individually. Conditioning and concentration can thus be maintained throughout the entire working day, guaranteeing constant, maximum productivity of the operator.

Mobile comfort

Easy access

Wide steps, ergonomically-positioned handles and adjustable steering column allow an easy access into the Liebherr operator's cab.

Optimum visibility

A well-thought-out design of the uppercarriage, featuring large glass panels and rounded edges, increase overall visibility and guarantees a safe overview of the entire working area.

Pleasant surroundings

Reduced engine speed together with elaborate sound insulation, as well as optimised hydraulic components, allow a comfortable noise level both inside and out. The noise level is comparable with that of a diesel car.

Maintenance features

Easy maintenance

Semi-Automatical Central lubrication for swing gear and main parts of the attachment.

Ease of operation

A shut-off valve, fitted to the hydraulic tank as standard, disconnects the system and guarantees ease of maintenance to the hydraulic system.

Easy access

Large maintenance flaps allow comfortable and safe access to all maintenance points.

Storage compartment – Everything has its place

- Sufficient storage space for a commercially-approved cooler box behind the operator's seat
- Drinks holder and storage compartment in operator's cab
- Large storage box behind the operator's cab
- Two standard tool boxes in the undercarriage



Fully-automatic air-conditioning system

- The air-conditioning system, fitted as standard, offers the same comfort as that of a regular car
- Two sensors for precise temperature regulation
- Ventilation flaps are controlled via keys
- Reheat function for quick dehumidifying / defrosting of the windshield



Hydrostatic fan drive

- Accelerated warm-up period
- Guaranteed constant oil quality as a result of constant oil temperature
- Increased life-expectancy of drive components
- The fan only runs at the output required, thus conserving fuel and reducing the noise level considerably





Economy

Liebherr offer a wide range of models, guaranteeing optimum suitability for every application. Easy access to components, as well as the proven service offer allows maintenance tasks to be performed in the shortest of times, thus reducing operating costs considerably.

Low operating costs

Solid Liebherr Engine

Maximum power of the engine is generated even when running at minimum speed. This allows the necessary output without limitation, whereby the torque which is available is ample for the level required, resulting in high productivity with low consumption.

Automatic idle

If no working or travel movements are being performed, the shiftable function reduces the engine speed to idle, which in turn reduces fuel consumption and emission levels.

Intelligent hydraulic management

The state-of-the-art hydraulic system allows conversion of the maximum engine output into high force or speed, as required. The maximum possible forces are available at all times.

Investment for the future

Extensive service offer

Proven service offers assured by our service personnel trained directly at the manufacturing plants, and endorsed by our tight-knit network of dealers, provide services in all required areas. Direct contact to Liebherr is guaranteed via complete integration of all service points in our own Liebherr logistics system. Electronic access to our global spare-parts management allows a 98% availability of spare-parts 24 hours a day.

High resale values

Liebherr excavators are built with high-grade materials and quality production to provide a long-term operational life-span, thus guaranteeing maximum resale values.

Service-orientated

- Service points of the engine – such as filter or filling amount displays are easily accessible and can be easily reached from the maintenance platform
- The magnetic rod on the hydraulic oil return flow increases life-expectancy of the oil
- semi-Automatical Central lubrication for swing gear and main parts of the attachment allowing quicker maintenance



Modular quick-change system made by Liebherr

- Likufix – connects all hydraulically mounted tools without having to leave the operator's cab, maximum productivity due to tool change being performed in a matter of seconds
- The suitable digging tool for every application. Your machine is a multi-functional tool carrier and will pay for itself very quickly indeed.
- Mechanic and hydraulic Liebherr quick-change adapter

Technical Data



Engine

Rating per ISO 9249	95 kW (129 HP) at 1,800 RPM
Model	Liebherr D 934 S according to level IIIA/Tier 3
Type	4 cylinder in-line
Bore/Stroke	122/136 mm
Displacement	6.4 l
Engine operation	4-stroke diesel unit pump system turbo-charged and after-cooled reduced emissions
Cooling system	water-cooled and integrated motor oil cooler
Air cleaner	dry-type air cleaner with pre-cleaner, primary and safety elements
Fuel tank	290 l
Engine idling	sensor controlled
Electrical system	
Voltage	24 V
Batteries	2 x 110 Ah/12 V
Alternator	three phase current 28 V/80 A



Hydraulic System

Hydraulic pump	Liebherr, variable displacement, swash-plate pump
Max. flow	300 l/min.
Max. hydr. pressure	350 bar
Hydraulic pump regulation and control	Liebherr-Synchron-Comfort-system (LSC) with electronic horsepower regulation, pressure cut-off, load sensing and torque controlled swing drive priority
Hydraulic tank capacity	175 l
Hydraulic system capacity	max. 290 l
Filtration	one main return filter with integrated partial micro filtration (5 µm)
Cooling system	compact cooler, consisting of a water cooler, sandwiched with hydraulic oil cooler, fuel cooler and after-cooler cores and hydrostatically driven fan
Modes	can also be adjusted by the operator to adjust engine and hydraulic performance to match job conditions (Note: All modes provide full max. power)
LIFT	for precise lifting tasks
FINE	for precision work at high speed i.e. grading
ECO	for most economic performance at best environmental conditions
POWER	for max. output
Super-Finish	additional operator adjustable work speed function for further increased feathering. Applies to all modes and all control functions
RPM adjustment	stepless adjustment of engine output via rpm



Hydraulic Controls

Power distribution	via control valve with integrated safety valves, simultaneous and independent operation of travel drive, swing drive and work
Control type	
Attachment and swing	proportional via joystick levers
Travel	proportional via foot pedal
Additional functions	via switch and/or proportional foot pedals
Option	Liebherr-Proportional-Controls, proportionally acting transmitters on the joysticks for additional hydraulic functions



Swing Drive

Drive	Liebherr swashplate motor with torque control and integrated brake valve
Transmission	Liebherr compact planetary reduction gear
Swing ring	Liebherr sealed single race ball bearing swing ring, internal teeth
Swing speed	0 – 9.0 RPM
Swing torque	42 kNm
Holding brake	wet discs (spring applied – pressure released)
Option	pedal controlled positioning brake



Operator's Cab

Cab	resiliently mounted, sound insulated, tinted windows, front window stores overhead, door with sliding window, large roof window, sun visor
Operator's seat	fully adjustable, shockabsorbing suspension, adjustable to operator's weight and size, 6-way adjustable Liebherr seat
Joysticks	integrated into adjustable seat consoles
Monitoring	menu driven query of current operating conditions via the LCD display. Automatic monitoring, display, warning (acoustical and optical signal) and saving machine data, for example, engine overheating, low engine oil pressure or low hydraulic oil level
Air conditioning	standard air conditioning, combined cooler/heater, additional dust filter in fresh air/recirculated
Noise emission	
ISO 6396	L_{pA} (inside cab) = 72 dB(A)
2000/14/EC	L_{WA} (surround noise) = 99 dB(A)
Sound level in correspondence with "Blue Angel" guidelines.	



Undercarriage

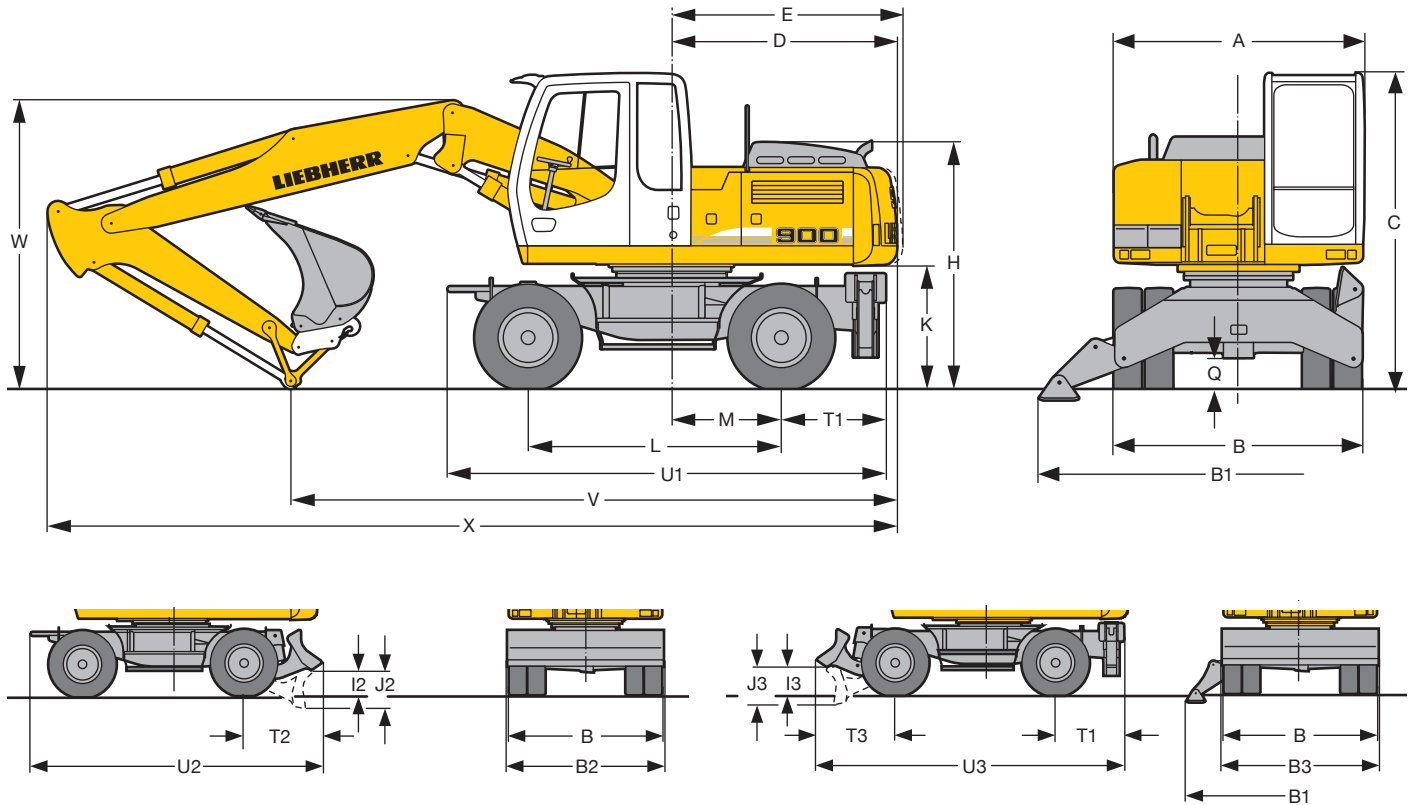
Drive	variable flow swashplate motor with automatic brake valve
Transmission	oversized two speed power shift transmission with additional creeper speed
Travel speed	0 – 2.5 km/h (creeper speed off road) 0 – 5.0 km/h (off road) 0 – 9.0 km/h (creeper speed on road) 0 – 20.0 km/h (road travel) 0 – 30.0 km/h Speeder (Option)
Axles	32 t excavator axles; automatic or operator controlled front axle oscillation lock
Brakes	steering and rigid axle with wet, maintenance-free multi disc brakes with minimized backlash. Spring applied/pressure released parking brake integrated into gear box
Stabilization	stabilizing blade (adjustable during travel for dozing) 2-point outriggers stabilizing blade, front + 2 pt. outriggers, rear 4-point outriggers
Option	EW (extra wide gauge) undercarriage



Attachment

Hydraulic cylinders	Liebherr cylinders with special seal system. Shock absorption
Pivots	sealed, low maintenance
Lubrication	Liebherr semi-automatic central lubrication system

Dimensions



	mm
A	2,550
B	2,550
B ¹⁾	2,750
B1	3,690
B2	2,550
B2 ¹⁾	2,750
B3	2,550
C	3,160
D	2,260
E	2,330
H	2,465
I2	425
I3	380
J2	605
J3	585
K	1,235
L	2,540
M	1,100
Q	360
T1	1,050
T2	1,225
T3	1,155
U1	4,390
U2	4,575
U3	4,740

¹⁾ = EW-Undercarriage
E = Tail radius

Tires 10.00-20

	Stick	Hydr. Adjustable Boom 3.60 m				Gooseneck Boom 5.00 m			
		stabil. 2 pt. blade 4 pt.		blade 4 pt. + 2 pt. outr.		stabil. 2 pt. blade 4 pt.		blade 4 pt. + 2 pt. outr.	
	m	mm	mm	mm	mm	mm	mm	mm	mm
V	2.25	6,250	6,200	6,200	6,200	5,850	5,800	5,800	5,800
	2.45	5,950	5,900	5,900	5,900	5,450	5,400	5,400	5,400
	2.65	5,850	5,800	5,800	5,800	5,350	5,250	5,650	5,550*
W	2.25	3,050	3,050	3,050	3,050	3,150	3,150	3,150	3,150
	2.45	3,050	3,050	3,050	3,050	3,050	3,050	3,050	3,050
	2.65	3,100	3,100	3,100	3,100	3,100	3,100	3,100	3,100*
X	2.25	8,700	8,650	8,650	8,650	8,500	8,400	8,400	8,400
	2.45	8,700	8,650	8,650	8,650	8,450	8,400	8,400	8,400
	2.65	8,700	8,650	8,650	8,650	8,500	8,400	8,800	8,700*

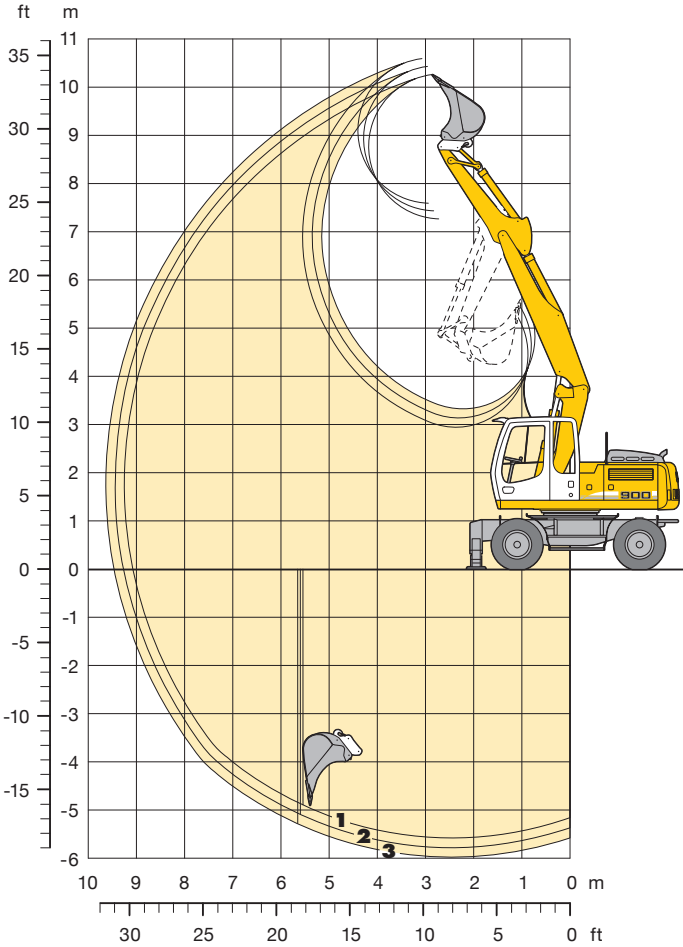
	Stick	Adjustable Up/Down Plus Offset Boom 3.60 m				Adjustable Offset Boom 4.90 m			
		stabil. 2 pt. blade 4 pt.		blade 4 pt. + 2 pt. outr.		stabil. 2 pt. blade 4 pt.		blade 4 pt. + 2 pt. outr.	
	m	mm	mm	mm	mm	mm	mm	mm	mm
V	2.25	6,250	6,150	6,100	6,150	6,250	6,150	6,150	6,150
	2.45	6,000	5,900	5,900	5,900	5,700	5,650	5,650	5,650
	2.65	5,900	5,800	5,800	5,800	5,300	5,250	5,650	5,500
W	2.25	3,050	3,050	3,050	3,050	3,150	3,150	3,150	3,150
	2.45	3,050	3,050	3,050	3,050	3,050	3,050	3,050	3,050
	2.65	3,150	3,150	3,150	3,150	3,000	3,000	3,000	3,000
X	2.25	8,700	8,650	8,650	8,650	8,350	8,300	8,300	8,300
	2.45	8,700	8,650	8,650	8,650	8,400	8,300	8,300	8,300
	2.65	8,700	8,650	8,650	8,650	8,400	8,300	8,750	8,600*

Dimensions are with attachment over steering axle

* Attachment over digging axle for shorter transport dimensions

Backhoe Attachment

with Hydr. Adjustable Boom 3.60 m



Digging Envelope with Quick Change Adapter

		1	2	3
Stick length	m	2.25	2.45	2.65
Max. digging depth	m	5.65	5.80	6.05
Max. reach at ground level	m	9.10	9.30	9.50
Max. dumping height	m	7.20	7.40	7.55
Max. teeth height	m	10.30	10.45	10.65
Min. attachment radius	m	2.85	2.75	2.80

Digging Forces without Quick Change Adapter

		1	2	3
Max. digging force (ISO 6015)	kN	81.0	76.0	71.6
	t	8.3	7.7	7.3
Max. breakout force (ISO 6015)	kN	98.4	98.4	98.4
	t	10.0	10.0	10.0

Max. breakout force with ripper bucket 125.7 kN (12.8 t)
 Max. possible digging force (stick 1.70 m) 99.4 kN (10.1 t)

Operating Weight

The operating weight includes the basic machine with 8 tires plus spacer rings, hydr. adjustable boom 3.60 m, stick 2.25 m, quick change adapter 48 and bucket 1,050 mm/0.80 m³.

Undercarriage versions	Weight
A 900 C Litronic [®] with stabilizer blade	17,700 kg
A 900 C Litronic [®] with 2 pt. outriggers	18,000 kg
A 900 C Litronic [®] with stabilizer blade + 2 pt. outriggers	18,800 kg
A 900 C Litronic [®] with 4 pt. outriggers	18,900 kg
A 900 C EW Litronic [®] with stabilizer blade	17,800 kg
A 900 C EW Litronic [®] with 2 pt. outriggers	18,100 kg

Buckets Machine stability per ISO 10567* (75% of tipping capacity)

Cutting width mm	Capacity ISO 7451 ¹⁾ m ³	Weight kg	Stabilizers raised			Stabilizer blade down			2 point outriggers down			Stabilizer blade + 2 pt. outr. down			4 point outriggers down			EW stabilizers raised			EW stabilizer blade down			EW 2 point outriggers down		
			Stick length (m)			Stick length (m)			Stick length (m)			Stick length (m)			Stick length (m)			Stick length (m)			Stick length (m)			Stick length (m)		
			2.25	2.45	2.65	2.25	2.45	2.65	2.25	2.45	2.65	2.25	2.45	2.65	2.25	2.45	2.65	2.25	2.45	2.65	2.25	2.45	2.65	2.25	2.45	2.65
500 ²⁾	0.32	290	□	□	□	□	□	□	□	□	□	□	□	□	□	□	□	□	□	□	□	□	□	□	□	
650 ²⁾	0.45	400	□	□	□	□	□	□	□	□	□	□	□	□	□	□	□	□	□	□	□	□	□	□	□	
850 ²⁾	0.60	430	□	□	□	□	□	□	□	□	□	□	□	□	□	□	□	□	□	□	□	□	□	□	□	
1,050 ²⁾	0.80	510	△	△	■	□	△	□	□	□	□	□	□	□	□	□	△	□	□	□	□	□	□	□	□	
1,250 ²⁾	0.95	560	■	■	▲	△	■	△	□	△	△	□	△	△	□	△	△	■	△	□	△	△	□	△	△	
500 ³⁾	0.32	330	□	□	□	□	□	□	□	□	□	□	□	□	□	□	□	□	□	□	□	□	□	□	□	
650 ³⁾	0.45	440	□	□	□	□	□	□	□	□	□	□	□	□	□	□	□	□	□	□	□	□	□	□	□	
850 ³⁾	0.60	480	□	□	□	□	□	□	□	□	□	□	□	□	□	□	□	□	□	□	□	□	□	□	□	
1,050 ³⁾	0.80	570	△	■	■	□	△	△	□	△	□	□	□	□	□	△	□	△	△	□	□	□	△	□	△	
1,250 ³⁾	0.95	630	■	■	▲	■	■	■	□	△	■	□	△	■	□	△	■	■	■	■	□	△	■	□	△	
500 ⁴⁾	0.34	280	□	□	□	□	□	□	□	□	□	□	□	□	□	□	□	□	□	□	□	□	□	□	□	
650 ⁴⁾	0.45	380	□	□	□	□	□	□	□	□	□	□	□	□	□	□	□	□	□	□	□	□	□	□	□	
850 ⁴⁾	0.65	410	□	□	□	□	□	□	□	□	□	□	□	□	□	□	□	□	□	□	□	□	□	□	□	
1,050 ⁴⁾	0.85	490	△	■	■	△	△	△	□	□	△	□	□	□	□	△	△	△	△	□	□	□	△	□	△	
1,250 ⁴⁾	1.05	530	■	▲	▲	■	■	■	△	△	■	△	△	■	△	△	■	■	■	■	△	△	■	△	△	

* Indicated loads are based on ISO 10567 and do not exceed 75% of tipping or 87% of hydraulic capacity, max. stick length without quick change adapter, lifted 360° on firm with blocked oscillating axle

¹⁾ comparable with SAE (heaped)

²⁾ Bucket with teeth ³⁾ Bucket with teeth in HD-version ⁴⁾ Bucket with cutting lip (also available in HD-version)

Buckets with 500 mm cutting width with limited digging depth

Max. material weight □ = ≤ 1.8 t/m³, △ = ≤ 1.5 t/m³, ■ = ≤ 1.2 t/m³, ▲ = not authorized

Lift Capacities

with Hydr. Adjustable Boom 3.60 m

Stick 2.25 m

m	Undercarriage	Stick 2.25 m				m			
		3.0 m	4.5 m	6.0 m	7.5 m				
9.0	Stabilizers raised								
	Stabilizer blade down								
	2 pt. outriggers down								
	Blade + 2 pt. down								
7.5	Stabilizers raised		4.0*	4.0*		2.3*			
	Stabilizer blade down		4.0*	4.0*		2.3*			
	2 pt. outriggers down		4.0*	4.0*		2.3*			
	Blade + 2 pt. down		4.0*	4.0*		2.3*			
6.0	Stabilizers raised		4.6*	4.7*	2.9	3.9*			
	Stabilizer blade down		4.7*	4.7*	3.1	3.9*			
	2 pt. outriggers down		4.7*	4.7*	3.8	3.9*			
	Blade + 2 pt. down		4.7*	4.7*	3.9*	3.9*			
4.5	Stabilizers raised	6.6*	6.6*	4.5	6.2*	2.9	4.5	1.8	2.0*
	Stabilizer blade down	6.6*	6.6*	4.9	6.2*	3.2	5.2*	2.0*	2.0*
	2 pt. outriggers down	6.6*	6.6*	5.9	6.2*	3.9	5.2*	2.0*	2.0*
	Blade + 2 pt. down	6.6*	6.6*	6.2*	6.2*	4.7	5.2*	2.0*	2.0*
3.0	Stabilizers raised	7.8	11.4*	4.3	6.7	2.9	4.4	1.8	3.0
	Stabilizer blade down	8.6	11.4*	4.7	7.4*	3.1	5.6*	2.0	3.9*
	2 pt. outriggers down	10.6	11.4*	5.7	7.4*	3.8*	5.6*	2.5	3.9*
	Blade + 2 pt. down	11.4*	11.4*	7.0*	7.4*	4.6	5.6*	3.2	3.9*
1.5	Stabilizers raised	7.6	11.3*	4.3	6.6	2.8	4.4	1.8	2.9
	Stabilizer blade down	8.4	11.3*	4.7	8.3*	3.0	6.0*	2.0	4.7*
	2 pt. outriggers down	10.4	11.3*	5.7	8.3*	3.7	6.0*	2.5	4.7*
	Blade + 2 pt. down	11.3*	11.3*	6.9	8.3*	4.6	6.0*	3.1	4.7*
0	Stabilizers raised	7.4	12.6*	4.1	6.6	2.6	4.2	1.7	2.8
	Stabilizer blade down	8.3	12.6*	4.5	8.4*	2.9	6.1*	1.9	4.6*
	2 pt. outriggers down	10.5	12.6*	5.7	8.4*	3.6	6.1*	2.4	4.6*
	Blade + 2 pt. down	12.6*	12.6*	6.9	8.4*	4.4	6.1*	3.0	4.6*
-1.5	Stabilizers raised	7.0	13.1*	3.9	6.6	2.4	4.0	1.7	2.9
	Stabilizer blade down	7.9	13.8*	4.3	8.5*	2.7	6.1*	1.9	3.0*
	2 pt. outriggers down	10.4	13.8*	5.5	8.5*	3.4	6.1*	2.4	3.0*
	Blade + 2 pt. down	13.5	13.8*	6.9	8.5*	4.3	6.1*	3.0*	3.0*
-3.0	Stabilizers raised	7.0	13.1*	3.6	6.2	2.3	3.9	1.7	2.9
	Stabilizer blade down	7.8	14.2*	4.0	8.3*	2.6	4.5*	2.4	3.6*
	2 pt. outriggers down	10.3	14.2*	6.1	8.3*	3.3	4.5*	3.0	3.6*
	Blade + 2 pt. down	13.8	14.2*	6.6	8.3*	4.1	4.5*	3.6*	3.6*
-4.5	Stabilizers raised	7.0	13.1*	3.6	6.2	2.3	3.9	1.7	2.9
	Stabilizer blade down	7.8	14.2*	4.0	8.3*	2.6	4.5*	2.4	3.6*
	2 pt. outriggers down	10.3	14.2*	6.1	8.3*	3.3	4.5*	3.0	3.6*
	Blade + 2 pt. down	13.8	14.2*	6.6	8.3*	4.1	4.5*	3.6*	3.6*

Stick 2.45 m

m	Undercarriage	Stick 2.45 m				m			
		3.0 m	4.5 m	6.0 m	7.5 m				
9.0	Stabilizers raised								
	Stabilizer blade down								
	2 pt. outriggers down								
	Blade + 2 pt. down								
7.5	Stabilizers raised		3.9*	3.9*		2.9*			
	Stabilizer blade down		3.9*	3.9*		2.9*			
	2 pt. outriggers down		3.9*	3.9*		2.9*			
	Blade + 2 pt. down		3.9*	3.9*		2.9*			
6.0	Stabilizers raised		4.3*	4.3*	2.9	3.8*			
	Stabilizer blade down		4.3*	4.3*	3.2	3.8*			
	2 pt. outriggers down		4.3*	4.3*	3.8*	3.8*			
	Blade + 2 pt. down		4.3*	4.3*	3.8*	3.8*			
4.5	Stabilizers raised	5.4*	5.4*	4.5	5.5*	2.9	4.5	1.9	2.6*
	Stabilizer blade down	5.4*	5.4*	4.9	5.5*	3.2	4.9*	2.1	2.6*
	2 pt. outriggers down	5.4*	5.4*	5.5	5.5*	3.9	4.9*	2.6	2.6*
	Blade + 2 pt. down	5.4*	5.4*	5.5	5.5*	4.7	4.9*	2.6*	2.6*
3.0	Stabilizers raised	7.8	11.5*	4.3	6.7	2.9	4.4	1.8	3.0*
	Stabilizer blade down	8.5	11.5*	4.8	7.2*	3.2	5.5*	2.0	4.0*
	2 pt. outriggers down	10.6	11.5*	5.7	7.2*	3.8	5.5*	2.5	4.0*
	Blade + 2 pt. down	11.5*	11.5*	7.0*	7.2*	4.6	5.5*	3.2	4.0*
1.5	Stabilizers raised	7.5	11.2*	4.3	6.6	2.8	4.4	1.8	2.9
	Stabilizer blade down	8.3	11.2*	4.6	8.2*	3.1	5.9*	2.0	4.7*
	2 pt. outriggers down	10.3*	11.2*	5.6	8.2*	3.8	5.9*	2.5	4.7*
	Blade + 2 pt. down	11.2*	11.2*	6.8	8.2*	4.6	5.9*	3.1	4.7*
0	Stabilizers raised	7.5	12.4*	4.1	6.6	2.6	4.2	1.7	2.8
	Stabilizer blade down	8.4	12.4*	4.6	8.4*	2.9	6.0*	1.9	4.6*
	2 pt. outriggers down	10.5	12.4*	5.7	8.4*	3.6	6.0*	2.4	4.6*
	Blade + 2 pt. down	12.4*	12.4*	6.9	8.4*	4.5	6.0*	3.0	4.6*
-1.5	Stabilizers raised	7.0	12.9	3.9	6.6	2.4	4.0	1.6	2.7*
	Stabilizer blade down	7.9	13.7*	4.3	8.5*	2.7	6.1*	1.8	2.7*
	2 pt. outriggers down	10.4	13.7*	5.5	8.5*	3.4	6.1*	2.3	2.7*
	Blade + 2 pt. down	13.4	13.7*	6.9	8.5*	4.3	6.1*	2.7	2.7*
-3.0	Stabilizers raised	6.9	13.1	3.6	6.3	2.3	3.9	2.0	3.4
	Stabilizer blade down	7.8	14.2*	4.1	8.6*	2.6	5.0*	2.2	3.5*
	2 pt. outriggers down	10.3	14.2*	6.2	8.6*	3.3	5.0*	2.8	3.5*
	Blade + 2 pt. down	13.8	14.2*	6.6	8.6*	4.1	5.0*	3.5*	3.5*
-4.5	Stabilizers raised	6.7	10.6*	3.5	5.2*			3.5	5.1*
	Stabilizer blade down	7.6	10.6*	3.9	5.2*			3.9	5.1*
	2 pt. outriggers down	9.9	10.6*	5.0	5.2*			5.0	5.1*
	Blade + 2 pt. down	10.6*	10.6*	5.2*	5.2*			5.1*	5.1*

Stick 2.65 m

m	Undercarriage	Stick 2.65 m				m			
		3.0 m	4.5 m	6.0 m	7.5 m				
9.0	Stabilizers raised					2.5*			
	Stabilizer blade down					2.5*			
	2 pt. outriggers down					2.5*			
	Blade + 2 pt. down					2.5*			
7.5	Stabilizers raised		3.7*	3.7*		1.9*			
	Stabilizer blade down		3.7*	3.7*		1.9*			
	2 pt. outriggers down		3.7*	3.7*		1.9*			
	Blade + 2 pt. down		3.7*	3.7*		1.9*			
6.0	Stabilizers raised		4.0*	4.0*	2.9	3.7*			
	Stabilizer blade down		4.0*	4.0*	3.2	3.7*			
	2 pt. outriggers down		4.0*	4.0*	3.7*	3.7*			
	Blade + 2 pt. down		4.0*	4.0*	3.7*	3.7*			
4.5	Stabilizers raised	4.5	4.9*	2.9	4.4	1.9	2.9*		
	Stabilizer blade down	4.8*	4.9*	3.2	4.5*	2.1	2.9*		
	2 pt. outriggers down	4.9*	4.9*	3.9	4.5*	2.6	2.9*		
	Blade + 2 pt. down	4.9*	4.9*	4.5*	4.5*	2.9*	2.9*		
3.0	Stabilizers raised	7.8	11.0*	4.3	6.7	2.9	4.4	1.9	3.0
	Stabilizer blade down	8.6*	11.0*	4.7	7.0*	3.2*	5.4*	2.1	4.0*
	2 pt. outriggers down	10.6	11.0*	5.7	7.0*	3.8	5.4*	2.6	4.0*
	Blade + 2 pt. down	11.0*	11.0*	7.0*	7.0*	4.6	5.4*	3.2	4.0*
1.5	Stabilizers raised	7.6	11.1*	4.2	6.6	2.8	4.4	1.8	2.9
	Stabilizer blade down	8.3	11.1*	4.6*	8.0*	3.1	5.8*	2.0	4.6*
	2 pt. outriggers down	10.3	11.1*	5.6	8.0*	3.8	5.8*	2.5	4.6*
	Blade + 2 pt. down	11.1*	11.1*	6.8	8.0*	4.5	5.8*	3.1	4.6*
0	Stabilizers raised	7.5	12.1*	4.1	6.6	2.7	4.3	1.7	2.8
	Stabilizer blade down	8.4	12.1*	4.6	8.3*	2.9	6.0*	1.9	4.6*
	2 pt. outriggers down	10.4*	12.1*	5.6*	8.3*	3.6	6.0*	2.4	4.6*
	Blade + 2 pt. down	12.1*	12.1*	6.8*	8.3*	4.5	6.0*	3.0	4.6*
-1.5	Stabilizers raised	7.0	12.9	3.9	6.6	2.4	4.0	1.6	2.8
	Stabilizer blade down	7.9	13.5*	4.3	8.4*	2.7	6.1*	1.8	3.8*
	2 pt. outriggers down	10.4	13.5*	5.4	8.4*	3.4	6.1*	2.3	3.8*
	Blade + 2 pt. down	13.3	13.5*	6.9	8.4*	4.3	6.1*	2.9	3.8*
-3.0	Stabilizers raised	6.9	13.0	3.6	6.3	2.3	3.9	1.8	3.2
	Stabilizer blade down	7.8	14.0*	4.1	8.6*	2.5	5.3*	2.1	3.2*
	2 pt. outriggers down	10.2	14.0*	5.2	8.6*	3.2	5.3*	2.6	3.2*
	Blade + 2 pt. down	13.8	14.0*	6.6	8.6*	4.1	5.3*	3.2*	3.2*
-4.5	Stabilizers raised	6.7	10.6*	3.5	5.2*			3.5	5.1*
	Stabilizer blade down	7.5	10.6*	3.9	5.2*			3.9	5.1*
	2 pt. outriggers down	9.9	10.6*	5.0	5.2*			5.0	5.1*
	Blade + 2 pt. down	10.6*	10.6*	5.2*	5.2*			5.1*	5.1*

Height
 Can be slewed through 360°
 In longitudinal position of undercarriage
 Max. reach
 * Limited by hydr. capacity

The lift capacities on the load hook of the Liebherr quick-change adapter 48 without grab attachment are stated in metric tons (t) and are valid on a firm, level supporting surface with blocked oscillating axle. These capacities can be slewed through 360° with the undercarriage in the transverse position. Capacities in the longitudinal position of the undercarriage (+/- 15°) are specified over the steering axle with the stabilisers raised and over the rigid axle with the stabilisers down. The values apply when the adjusting cylinder is in the optimal position. Indicated loads comply with the ISO 10567 standard and do not exceed 75% of tipping or 87% of hydraulic capacity, or are limited by the permissible load of the load hook on the quick-change adapter (max. 12 t). Without the quick-change adapter, lift capacities will increase by up to 226 kg.

In accordance with the harmonised EU Standard EN 474-5, hydraulic excavators used for lifting operations must be equipped with pipe rupture protection devices on the hoist cylinders and an overload warning device.

Lift Capacities

with Hydr. Adjustable Boom 3.60 m EW-Undercarriage

Stick 2.25 m

m	Undercarriage	3.0 m		4.5 m		6.0 m		7.5 m		m
		Stabilizers raised Stabilizer blade down 2 pt. outriggers down	Stabilizers raised Stabilizer blade down 2 pt. outriggers down	Stabilizers raised Stabilizer blade down 2 pt. outriggers down	Stabilizers raised Stabilizer blade down 2 pt. outriggers down	Stabilizers raised Stabilizer blade down 2 pt. outriggers down	Stabilizers raised Stabilizer blade down 2 pt. outriggers down	Stabilizers raised Stabilizer blade down 2 pt. outriggers down	Stabilizers raised Stabilizer blade down 2 pt. outriggers down	
9.0	Stabilizers raised Stabilizer blade down 2 pt. outriggers down									
7.5	Stabilizers raised Stabilizer blade down 2 pt. outriggers down			4.0* 4.0*	4.0* 4.0*			2.3* 2.3*	2.3* 2.3*	5.41
6.0	Stabilizers raised Stabilizer blade down 2 pt. outriggers down			4.7* 4.7*	4.7* 4.7*	3.1 3.9*	3.9* 3.9*	2.1* 2.1*	2.1* 2.1*	6.73
4.5	Stabilizers raised Stabilizer blade down 2 pt. outriggers down	6.6* 6.6*	6.6* 6.6*	4.9 6.1	6.2* 6.2*	3.2 3.9	4.5 5.2*	2.0* 2.0*	2.0* 2.0*	7.50
3.0	Stabilizers raised Stabilizer blade down 2 pt. outriggers down	8.5 11.0	11.0* 11.0*	4.7 5.8	6.7 7.4*	3.1 3.9	4.4 5.6*	2.0 2.6	3.0 3.9*	7.91
1.5	Stabilizers raised Stabilizer blade down 2 pt. outriggers down	8.3 9.0	10.4* 10.4*	4.6 5.1	6.6 8.3*	3.0 3.3	4.4 6.0*	2.0 2.2	2.9 4.7*	8.00
0	Stabilizers raised Stabilizer blade down 2 pt. outriggers down	8.3 9.4	12.6* 12.6*	4.5 5.0	6.6* 8.4*	2.9 3.6	4.2 6.1*	1.9 2.1	2.9* 4.5*	7.80
-1.5	Stabilizers raised Stabilizer blade down 2 pt. outriggers down	7.9 9.0	13.0 13.8*	4.3 4.8	6.6 8.5*	2.7 3.0	4.0 6.1*	1.9 2.1	2.9 3.0*	7.27
-3.0	Stabilizers raised Stabilizer blade down 2 pt. outriggers down	7.8 8.9	13.2 14.2*	4.0 4.5	6.3 8.3*	2.6 3.4	3.9 4.5*	2.4 2.6	3.6* 3.6*	6.33
-4.5	Stabilizers raised Stabilizer blade down 2 pt. outriggers down									

Stick 2.45 m

m	Undercarriage	3.0 m		4.5 m		6.0 m		7.5 m		m
		Stabilizers raised Stabilizer blade down 2 pt. outriggers down	Stabilizers raised Stabilizer blade down 2 pt. outriggers down	Stabilizers raised Stabilizer blade down 2 pt. outriggers down	Stabilizers raised Stabilizer blade down 2 pt. outriggers down	Stabilizers raised Stabilizer blade down 2 pt. outriggers down	Stabilizers raised Stabilizer blade down 2 pt. outriggers down	Stabilizers raised Stabilizer blade down 2 pt. outriggers down	Stabilizers raised Stabilizer blade down 2 pt. outriggers down	
9.0	Stabilizers raised Stabilizer blade down 2 pt. outriggers down									2.9* 2.9* 2.9*
7.5	Stabilizers raised Stabilizer blade down 2 pt. outriggers down									2.1* 2.1* 2.1*
6.0	Stabilizers raised Stabilizer blade down 2 pt. outriggers down									1.9* 1.9* 1.9*
4.5	Stabilizers raised Stabilizer blade down 2 pt. outriggers down	5.4* 5.4*	5.4* 5.4*	4.9 5.5*	5.5* 5.5*	3.2* 4.0	4.5 4.9*	2.1 2.6	2.6* 2.6*	1.8* 1.8* 1.8*
3.0	Stabilizers raised Stabilizer blade down 2 pt. outriggers down	8.5 9.3	11.5* 11.5*	4.8 5.2	6.7 7.2*	3.1 3.4	4.4 5.5*	2.0 2.2	3.0 4.0*	1.7 1.8* 1.8*
1.5	Stabilizers raised Stabilizer blade down 2 pt. outriggers down	8.3 9.1	10.4* 10.4*	4.6 5.0	6.5 8.2*	3.1 3.4	4.4 5.9*	2.0 2.2	2.9 4.7*	1.6 1.8 2.0*
0	Stabilizers raised Stabilizer blade down 2 pt. outriggers down	8.4 9.1	12.4* 12.4*	4.6 5.0	6.6 8.4*	2.8 3.7	4.2 6.0*	1.9 2.5	2.9 4.6*	1.7 1.9 2.2*
-1.5	Stabilizers raised Stabilizer blade down 2 pt. outriggers down	7.9 9.0	13.0 13.7*	4.3 4.8	6.6 8.5*	2.7 3.0	4.0 6.1*	1.8 2.0	2.7* 2.7*	1.8* 2.0* 2.7*
-3.0	Stabilizers raised Stabilizer blade down 2 pt. outriggers down	7.8 8.9	13.1 14.2*	4.1 4.5	6.3 8.6*	2.5 2.8	3.9 5.0*	2.2 2.7	3.4 3.5*	2.2 2.5 2.9
-4.5	Stabilizers raised Stabilizer blade down 2 pt. outriggers down	7.6 8.6	9.4* 9.4*							5.2 5.9 6.5*

Stick 2.65 m

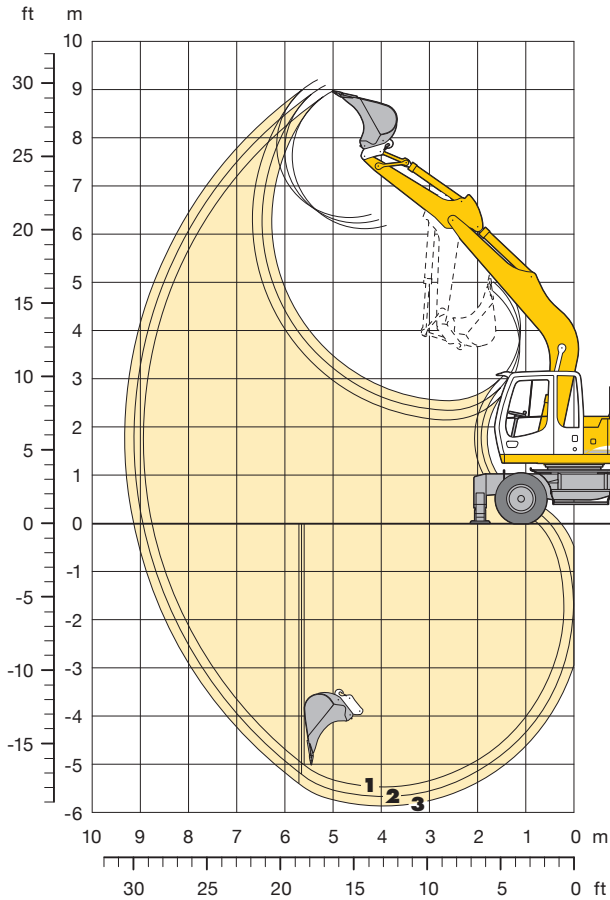
m	Undercarriage	3.0 m		4.5 m		6.0 m		7.5 m		m
		Stabilizers raised Stabilizer blade down 2 pt. outriggers down	Stabilizers raised Stabilizer blade down 2 pt. outriggers down	Stabilizers raised Stabilizer blade down 2 pt. outriggers down	Stabilizers raised Stabilizer blade down 2 pt. outriggers down	Stabilizers raised Stabilizer blade down 2 pt. outriggers down	Stabilizers raised Stabilizer blade down 2 pt. outriggers down	Stabilizers raised Stabilizer blade down 2 pt. outriggers down	Stabilizers raised Stabilizer blade down 2 pt. outriggers down	
9.0	Stabilizers raised Stabilizer blade down 2 pt. outriggers down									2.5* 2.5* 2.5*
7.5	Stabilizers raised Stabilizer blade down 2 pt. outriggers down									1.9* 1.9* 1.9*
6.0	Stabilizers raised Stabilizer blade down 2 pt. outriggers down									1.7* 1.7* 1.7*
4.5	Stabilizers raised Stabilizer blade down 2 pt. outriggers down									1.6* 1.6* 1.6*
3.0	Stabilizers raised Stabilizer blade down 2 pt. outriggers down	8.4* 9.4	11.0* 11.0*	4.7 5.1	6.7* 7.0*	3.2* 3.4	4.4* 5.4*	2.0 2.3	3.0 4.0*	1.6 1.7*
1.5	Stabilizers raised Stabilizer blade down 2 pt. outriggers down	8.2* 9.1	10.9* 10.9*	4.5 5.0	6.5 8.0*	3.1 3.8	4.3 5.8*	2.0 2.5	2.9 4.6*	1.6 1.8*
0	Stabilizers raised Stabilizer blade down 2 pt. outriggers down	8.3 9.2	12.0* 12.0*	4.6 5.1	6.6 8.3*	2.9 3.7	4.2 6.0*	1.9 2.5	2.9 4.6*	1.8 2.0*
-1.5	Stabilizers raised Stabilizer blade down 2 pt. outriggers down	7.9 9.0	12.7 13.5*	4.3 4.8	6.6 8.4*	2.7 3.0	4.0 6.1*	1.8 2.0	2.8 3.8*	1.7 2.3
-3.0	Stabilizers raised Stabilizer blade down 2 pt. outriggers down	7.8 8.8	13.1 14.0*	4.1 4.5	6.3 8.5*	2.5 3.3	3.9 5.3*	2.1 2.7	3.2* 3.2*	2.3 3.2*
-4.5	Stabilizers raised Stabilizer blade down 2 pt. outriggers down	7.5 8.5	10.6* 10.6*	3.9 4.4	5.2* 5.2*			3.9 4.4	5.1* 5.1*	5.1* 5.1*

Height Can be slewed through 360° In longitudinal position of undercarriage Max. reach * Limited by hydr. capacity

The lift capacities on the load hook of the Liebherr quick-change adapter 48 without grab attachment are stated in metric tons (t) and are valid on a firm, level supporting surface with blocked oscillating axle. These capacities can be slewed through 360° with the undercarriage in the transverse position. Capacities in the longitudinal position of the undercarriage (+/- 15°) are specified over the steering axle with the stabilisers raised and over the rigid axle with the stabilisers down. The values apply when the adjusting cylinder is in the optimal position. Indicated loads comply with the ISO 10567 standard and do not exceed 75% of tipping or 87% of hydraulic capacity, or are limited by the permissible load of the load hook on the quick-change adapter (max. 12 t). Without the quick-change adapter, lift capacities will increase by up to 226 kg. In accordance with the harmonised EU Standard EN 474-5, hydraulic excavators used for lifting operations must be equipped with pipe rupture protection devices on the hoist cylinders and an overload warning device.

Backhoe Attachment

with Gooseneck Boom 5.00 m



Digging Envelope with Quick Change Adapter

		1	2	3
Stick length	m	2.25	2.45	2.65
Max. digging depth	m	5.50	5.70	5.90
Max. reach at ground level	m	8.80	9.00	9.20
Max. dumping height	m	6.15	6.25	6.40
Max. teeth height	m	9.00	9.10	9.25
Min. attachment radius	m	3.30	3.05	3.05

Digging Forces without Quick Change Adapter

		1	2	3
Max. digging force (ISO 6015)	kN	81.0	76.0	71.6
	t	8.3	7.7	7.3
Max. breakout force (ISO 6015)	kN	98.4	98.4	98.4
	t	10.0	10.0	10.0

Max. breakout force with ripper bucket 125.7 kN (12.8 t)
 Max. possible digging force (stick 1.70 m) 99.4 kN (10.1 t)

Operating Weight

The operating weight includes the basic machine with 8 tires plus spacer rings, gooseneck boom 5.00 m, stick 2.25 m, quick change adapter 48 and bucket 1,050 mm/0.80 m³.

Undercarriage versions	Weight
A 900 C Litronic [®] with stabilizer blade	17,400 kg
A 900 C Litronic [®] with 2 pt. outriggers	17,700 kg
A 900 C Litronic [®] with stabilizer blade + 2 pt. outriggers	18,500 kg
A 900 C Litronic [®] with 4 pt. outriggers	18,600 kg
A 900 C EW Litronic [®] with stabilizer blade	17,500 kg
A 900 C EW Litronic [®] with 2 pt. outriggers	17,800 kg

Buckets Machine stability per ISO 10567* (75% of tipping capacity)

Cutting width mm	Capacity ISO 7451 ¹⁾ m ³	Weight kg	Stabilizers raised			Stabilizer blade down			2 point outriggers down			Stabilizer blade + 2 pt. outr. down			4 point outriggers down			EW stabilizers raised			EW stabilizer blade down			EW 2 point outriggers down		
			Stick length (m)			Stick length (m)			Stick length (m)			Stick length (m)			Stick length (m)			Stick length (m)			Stick length (m)			Stick length (m)		
			2.25	2.45	2.65	2.25	2.45	2.65	2.25	2.45	2.65	2.25	2.45	2.65	2.25	2.45	2.65	2.25	2.45	2.65	2.25	2.45	2.65	2.25	2.45	2.65
500 ²⁾	0.32	290	□	□	□	□	□	□	□	□	□	□	□	□	□	□	□	□	□	□	□	□	□	□	□	□
650 ²⁾	0.45	400	□	□	□	□	□	□	□	□	□	□	□	□	□	□	□	□	□	□	□	□	□	□	□	□
850 ²⁾	0.60	430	□	□	□	□	□	□	□	□	□	□	□	□	□	□	□	□	□	□	□	□	□	□	□	□
1,050 ²⁾	0.80	510	△	△	△	□	□	□	□	□	□	□	□	□	□	□	□	□	□	□	□	□	□	□	□	□
1,250 ²⁾	0.95	560	■	■	■	△	△	△	□	△	△	□	△	△	□	△	△	△	△	△	□	△	△	□	△	△
500 ³⁾	0.32	330	□	□	□	□	□	□	□	□	□	□	□	□	□	□	□	□	□	□	□	□	□	□	□	□
650 ³⁾	0.45	440	□	□	□	□	□	□	□	□	□	□	□	□	□	□	□	□	□	□	□	□	□	□	□	□
850 ³⁾	0.60	480	□	□	□	□	□	□	□	□	□	□	□	□	□	□	□	□	□	□	□	□	□	□	□	□
1,050 ³⁾	0.80	570	△	△	△	□	□	□	□	□	□	□	□	□	□	□	□	□	□	□	□	□	□	□	□	□
1,250 ³⁾	0.95	630	■	■	■	△	△	■	□	△	■	□	△	■	□	△	■	△	△	■	□	△	■	□	△	■
500 ⁴⁾	0.34	280	□	□	□	□	□	□	□	□	□	□	□	□	□	□	□	□	□	□	□	□	□	□	□	□
650 ⁴⁾	0.45	380	□	□	□	□	□	□	□	□	□	□	□	□	□	□	□	□	□	□	□	□	□	□	□	□
850 ⁴⁾	0.65	410	□	□	□	□	□	□	□	□	□	□	□	□	□	□	□	□	□	□	□	□	□	□	□	□
1,050 ⁴⁾	0.85	490	△	△	△	□	□	□	□	□	□	□	□	□	□	□	□	□	□	□	□	□	□	□	□	□
1,250 ⁴⁾	1.05	530	■	■	▲	△	△	■	□	△	■	□	△	■	□	△	■	△	△	■	□	△	■	□	△	■

* Indicated loads are based on ISO 10567 and do not exceed 75% of tipping or 87% of hydraulic capacity, max. stick length without quick change adapter, lifted 360° on firm with blocked oscillating axle

1) comparable with SAE (heaped)

2) Bucket with teeth 3) Bucket with teeth in HD-version 4) Bucket with cutting lip (also available in HD-version)

Buckets with 500 mm cutting width with limited digging depth

Max. material weight □ = ≤ 1.8 t/m³, △ = ≤ 1.5 t/m³, ■ = ≤ 1.2 t/m³, ▲ = not authorized

Lift Capacities

with Gooseneck Boom 5.00 m

Stick 2.25 m

m	Undercarriage	3.0 m		4.5 m		6.0 m		7.5 m		m	
		Height	Can be slewed through 360°	Height	Can be slewed through 360°	Height	Can be slewed through 360°	Height	Can be slewed through 360°		
9.0	Stabilizers raised										
	Stabilizer blade down										
	2 pt. outriggers down										
	Blade + 2 pt. down										
7.5	Stabilizers raised								2.3'	2.3'	
	Stabilizer blade down								2.3'	2.3'	
	2 pt. outriggers down								2.3'	2.3'	
	Blade + 2 pt. down								2.3'	2.3'	
6.0	Stabilizers raised					2.8	3.0*		2.0'	2.0'	
	Stabilizer blade down					3.0	3.0*		2.0'	2.0'	
	2 pt. outriggers down					3.0*	3.0*		2.0'	2.0'	
	Blade + 2 pt. down					3.0*	3.0*		2.0'	2.0'	
4.5	Stabilizers raised			4.3	4.6*	2.7	4.2*		2.0	2.0*	
	Stabilizer blade down			4.6*	4.6*	3.0	4.2*		2.0*	2.0*	
	2 pt. outriggers down			4.6*	4.6*	3.7	4.2*		2.0*	2.0*	
	Blade + 2 pt. down			4.6*	4.6*	4.2*	4.2*		2.0*	2.0*	
3.0	Stabilizers raised	7.0	9.5*	3.9	6.0*	2.5	4.2	1.8	2.4*	1.7	2.1*
	Stabilizer blade down	7.9	9.5*	4.3	6.0*	2.8	4.8*	2.0	2.4*	1.9	2.1*
	2 pt. outriggers down	9.5*	9.5*	5.4	6.0*	3.5	4.8*	2.4*	2.4*	2.1*	2.1*
	Blade + 2 pt. down	9.5*	9.5*	6.0*	6.0*	4.4	4.8*	2.4*	2.4*	2.1*	2.1*
1.5	Stabilizers raised			3.5	6.1*	2.4	4.0	1.7	2.9	1.6	2.2*
	Stabilizer blade down			4.0	7.4*	2.6	5.5*	1.9	3.2*	1.8	2.2*
	2 pt. outriggers down			5.0	7.4*	3.3	5.5*	2.4	3.2*	2.2*	2.2*
	Blade + 2 pt. down			6.5	7.4*	4.2	5.5*	3.0	3.2*	2.2*	2.2*
0	Stabilizers raised	5.9*	5.9*	3.3	5.9	2.3	3.9		1.7	2.6*	
	Stabilizer blade down	5.9*	5.9*	3.7	8.3*	2.5	5.9*		1.9	2.6*	
	2 pt. outriggers down	5.9*	5.9*	4.8	8.3*	3.2	5.9*		2.4	2.6*	
	Blade + 2 pt. down	5.9*	5.9*	6.2	8.3*	4.1	5.9*		2.6*	2.6*	
-1.5	Stabilizers raised	6.0	9.0*	3.3	5.8	2.2	3.8		1.9	3.2*	
	Stabilizer blade down	6.9	9.0*	3.7	8.3*	2.5	6.0*		2.1	3.3*	
	2 pt. outriggers down	9.0*	9.0*	4.8	8.3*	3.2	6.0*		2.6	3.3*	
	Blade + 2 pt. down	9.0*	9.0*	6.2	8.3*	4.0	6.0*		3.3*	3.3*	
-3.0	Stabilizers raised	6.2	10.9*	3.4	5.9				3.3*	3.3*	
	Stabilizer blade down	7.1	10.9*	3.8	7.4*				2.4	4.0	
	2 pt. outriggers down	9.4	10.9*	4.9	7.4*				2.6	5.2*	
	Blade + 2 pt. down	10.9*	10.9*	6.3	7.4*				4.2	5.2*	
-4.5	Stabilizers raised	6.0	10.9*	7.4*	7.4*				5.2*	5.2*	
	Stabilizer blade down										
	2 pt. outriggers down										
	Blade + 2 pt. down										

Stick 2.45 m

m	Undercarriage	3.0 m		4.5 m		6.0 m		7.5 m		m	
		Height	Can be slewed through 360°	Height	Can be slewed through 360°	Height	Can be slewed through 360°	Height	Can be slewed through 360°		
9.0	Stabilizers raised										
	Stabilizer blade down										
	2 pt. outriggers down										
	Blade + 2 pt. down										
7.5	Stabilizers raised									2.1*	2.1*
	Stabilizer blade down									2.1*	2.1*
	2 pt. outriggers down									2.1*	2.1*
	Blade + 2 pt. down									2.1*	2.1*
6.0	Stabilizers raised					2.8	3.2*		1.9*	1.9*	
	Stabilizer blade down					3.1	3.2*		1.9*	1.9*	
	2 pt. outriggers down					3.2*	3.2*		1.9*	1.9*	
	Blade + 2 pt. down					3.2*	3.2*		1.9*	1.9*	
4.5	Stabilizers raised					2.7	4.0*		1.8*	1.8*	
	Stabilizer blade down					3.0	4.0*		1.8*	1.8*	
	2 pt. outriggers down					3.7	4.0*		1.8*	1.8*	
	Blade + 2 pt. down					4.0*	4.0*		1.8*	1.8*	
3.0	Stabilizers raised	7.2	8.8*	3.9	5.7*	2.5	4.2	1.8	2.9	1.7	1.9*
	Stabilizer blade down	8.1	8.8*	4.4	5.7*	2.8	4.7*	2.0	2.9*	1.8	1.9*
	2 pt. outriggers down	8.8*	8.8*	5.5	5.7*	3.5	4.7*	2.5	2.9*	1.9*	1.9*
	Blade + 2 pt. down	8.8*	8.8*	6.0*	5.7*	4.4	4.7*	2.9*	2.9*	1.9*	1.9*
1.5	Stabilizers raised	5.2*	5.2*	3.6	6.1	2.4	4.0	1.7	2.8	1.6	2.0*
	Stabilizer blade down	5.2*	5.2*	4.0	7.2*	2.6	5.4*	1.9	3.7*	1.7	2.0*
	2 pt. outriggers down	5.2*	5.2*	5.1	7.2*	3.3	5.4*	2.4	3.7*	2.0*	2.0*
	Blade + 2 pt. down	5.2*	5.2*	6.5	7.2*	4.2	5.4*	3.0	3.7*	2.0*	2.0*
0	Stabilizers raised	5.9*	5.9*	3.3	5.9	2.2	3.8	1.6	2.8	1.6	2.3*
	Stabilizer blade down	5.9*	5.9*	3.7	8.2*	2.5	5.9*	1.8	3.3*	1.8	2.3*
	2 pt. outriggers down	5.9*	5.9*	4.8	8.2*	3.2	5.9*	2.3	3.3*	2.3	2.3*
	Blade + 2 pt. down	5.9*	5.9*	6.2	8.2*	4.1	5.9*	3.0	3.3*	2.3*	2.3*
-1.5	Stabilizers raised	6.0	9.0*	3.3	5.8	2.2	3.8		1.7	2.9*	
	Stabilizer blade down	6.8	8.6*	3.7	8.3*	2.5	6.0*		2.0	2.9*	
	2 pt. outriggers down	8.6*	8.6*	4.7	8.3*	3.1	6.0*		2.5	2.9*	
	Blade + 2 pt. down	8.6*	8.6*	6.1	8.3*	4.0	6.0*		2.9*	2.9*	
-3.0	Stabilizers raised	6.1	11.2*	3.3	5.9	2.3	3.8		1.7	2.9*	
	Stabilizer blade down	7.0	11.2*	3.7	7.6*	2.5	5.3*		2.2	3.7*	
	2 pt. outriggers down	9.3	11.2*	4.8	7.6*	3.2	5.3*		2.4	4.3*	
	Blade + 2 pt. down	11.2*	11.2*	6.2	7.6*	4.1	5.3*		4.0	4.3*	
-4.5	Stabilizers raised	6.0	10.9*	7.6*	7.6*				4.3*	4.3*	
	Stabilizer blade down								3.6	5.3*	
	2 pt. outriggers down								5.1	5.3*	
	Blade + 2 pt. down								5.3*	5.3*	

Stick 2.65 m

m	Undercarriage	3.0 m		4.5 m		6.0 m		7.5 m		m	
		Height	Can be slewed through 360°	Height	Can be slewed through 360°	Height	Can be slewed through 360°	Height	Can be slewed through 360°		
9.0	Stabilizers raised										
	Stabilizer blade down										
	2 pt. outriggers down										
	Blade + 2 pt. down										
7.5	Stabilizers raised							1.9'	1.9'		
	Stabilizer blade down							1.9'	1.9'		
	2 pt. outriggers down							1.9'	1.9'		
	Blade + 2 pt. down							1.9'	1.9'		
6.0	Stabilizers raised					2.8	3.2*		1.7*	1.7*	
	Stabilizer blade down					3.1	3.2*		1.7*	1.7*	
	2 pt. outriggers down					3.2*	3.2*		1.7*	1.7*	
	Blade + 2 pt. down					3.2*	3.2*		1.7*	1.7*	
4.5	Stabilizers raised					2.7	3.9*	1.8	1.9*	1.6*	1.6*
	Stabilizer blade down					3.0	3.9*	1.9*	1.9*	1.6*	1.6*
	2 pt. outriggers down					3.7	3.9*	1.9*	1.9*	1.6*	1.6*
	Blade + 2 pt. down					3.9*	3.9*	1.9*	1.9*	1.6*	1.6*
3.0	Stabilizers raised	7.3	8.1*	4.0	5.5*	2.5	4.2	1.8	2.9	1.6	1.7*
	Stabilizer blade down	8.1*	8.1*	4.4	5.5*	2.8	4.5*	1.9	3.2*	1.7*	1.7*
	2 pt. outriggers down	8.1*	8.1*	5.5*	5.5*	3.5	4.5*	2.6	3.2*	1.7*	1.7*
	Blade + 2 pt. down	8.1*	8.1*	5.5*	5.5*	4.4	4.5*	3.1	3.2*	1.7*	1.7*
1.5	Stabilizers raised	6.1*	6.1*	3.6	6.1	2.4	4.0	1.7	2.8	1.5	1.8*
	Stabilizer blade down	6.1*	6.1*	4.0	7.0*	2.6	5.2*	1.9	4.0*	1.7	1.8*
	2 pt. outriggers down	6.1*	6.1*	5.1	7.0*	3.3	5.2*	2.4	4.0*	1.8*	1.8*
	Blade + 2 pt. down	6.1*	6.1*	6.5	7.0*	4.2	5.2*	3.0	4.0*	1.8*	1.8*
0	Stabilizers raised	5.9	6.0*	3.3	5.9	2.2	3.8	1.6	2.8	1.5	2.1*
	Stabilizer blade down	6.0*	6.0*	3.7	8.0*	2.5	5.8*	1.8	3.9*	1.7	2.1*
	2 pt. outriggers down	6.0*	6.0*	4.8	8.0*	3.2	5.8*	2.3	3.9*	2.1*	2.1*
	Blade + 2 pt. down	6.0*	6.0*	6.2	8.0*	4.1	5.8*	2.9	3.9*	2.1*	2.1*
-1.5	Stabilizers raised	5.9	8.3*	3.2	5.8	2.2	3.8		1.6	2.6*	
	Stabilizer blade down	6.7	8.3*	3.6	8.3*	2.4	6.0*		1.8	2.6*	
	2 pt. outriggers down	8.3*	8.3*	4.7	8.3*	3.1	6.0*		2.4	2.6*	
	Blade + 2 pt. down	8.3*	8.3*	6.1	8.3*	4.0	6.0*		2.6*	2.6*	
-3.0	Stabilizers raised	6.0	11.5*	3.3	5.8	2.2	3.8		2.0	3.5	
	Stabilizer blade down	6.5	11.5*	3.7	7.7*	2.5	5.5*		2.3	3.7*	
	2 pt. outriggers down	9.2	11.5*	4.7	7.7*	3.2	5.5*		2.9	3.7*	
	Blade + 2 pt. down	11.5*	11.5*	6.2	7.7*	4.0	5.5*		3.7	3.7*	
-4.5	Stabilizers raised	6.4	8.6*	3.5	5.7*				3.2	5.2*	
	Stabilizer blade down	7.2	8.6*	3.9	5.7*				3.6	5.2*	
	2 pt. outriggers down	8.6*	8.6*	5.0	5.7*				4.5	5.2*	
	Blade + 2 pt. down	8.6*	8.6*	5.7*	5.7*				5.2*	5.2*	

Height
 Can be slewed through 360°
 In longitudinal position of undercarriage
 Max. reach
 * Limited by hydr. capacity

The lift capacities on the load hook of the Liebherr quick-change adapter 48 without grab attachment are stated in metric tons (t) and are valid on a firm, level supporting surface with blocked oscillating axle. These capacities can be slewed through 360° with the undercarriage in the transverse position. Capacities in the longitudinal position of the undercarriage (+/- 15°) are specified over the steering axle with the stabilizers raised and over the rigid axle with the stabilizers down. Indicated loads comply with the ISO 10567 standard and do not exceed 75% of tipping or 87% of hydraulic capacity, or are limited by the permissible load of the load hook on the quick-change adapter (max. 12 t). Without the quick-change adapter, lift capacities will increase by up to 226 kg. In accordance with the harmonised EU Standard EN 474-5, hydraulic excavators used for lifting operations must be equipped with pipe rupture protection devices on the hoist cylinders and an overload warning device.

Lift Capacities

with Gooseneck Boom 5.00 m EW-Undercarriage

Stick 2.25 m

m	Undercarriage	3.0 m		4.5 m		6.0 m		7.5 m		m		
		Stabilizers raised Stabilizer blade down 2 pt. outriggers down	Stabilizers raised Stabilizer blade down 2 pt. outriggers down	Stabilizers raised Stabilizer blade down 2 pt. outriggers down	Stabilizers raised Stabilizer blade down 2 pt. outriggers down	Stabilizers raised Stabilizer blade down 2 pt. outriggers down	Stabilizers raised Stabilizer blade down 2 pt. outriggers down	Stabilizers raised Stabilizer blade down 2 pt. outriggers down	Stabilizers raised Stabilizer blade down 2 pt. outriggers down			
9.0	Stabilizers raised Stabilizer blade down 2 pt. outriggers down											
7.5	Stabilizers raised Stabilizer blade down 2 pt. outriggers down							2.3* 2.3* 2.3*	2.3* 2.3* 2.3*	4.89		
6.0	Stabilizers raised Stabilizer blade down 2 pt. outriggers down					3.0 3.0* 3.0*	3.0* 3.0* 3.0*	2.0* 2.0* 2.0*	2.0* 2.0* 2.0*	6.32		
4.5	Stabilizers raised Stabilizer blade down 2 pt. outriggers down			4.6* 4.6* 4.6*	4.6* 4.6* 4.6*	3.0 3.3 3.8	4.2* 4.2* 4.2*	2.0* 2.0* 2.0*	2.0* 2.0* 2.0*	7.14		
3.0	Stabilizers raised Stabilizer blade down 2 pt. outriggers down	7.9 9.0 9.5*	9.5* 9.5* 9.5*	4.3 4.8 5.6	6.0* 6.0* 6.0*	2.8 3.1 3.6	4.2 4.8* 4.8*	2.0 2.2 2.4*	2.4* 2.4* 2.4*	1.9 2.1* 2.1*	7.57	
1.5	Stabilizers raised Stabilizer blade down 2 pt. outriggers down			4.0 4.4 5.2	6.1 7.4* 7.4*	2.6 2.9 3.4	4.0 5.5* 5.5*	1.9 2.1 2.5	2.9 3.2* 3.2*	1.8 2.0 2.2*	7.67	
0	Stabilizers raised Stabilizer blade down 2 pt. outriggers down	5.9* 5.9* 5.9*	5.9* 5.9* 5.9*	3.7 4.2 5.0	5.9 8.3* 8.3*	2.5 2.8 3.3	3.9 5.9* 5.9*	1.9 2.1 2.4	2.9 2.6* 2.6*	1.9 2.1 2.6*	7.45	
-1.5	Stabilizers raised Stabilizer blade down 2 pt. outriggers down	6.9 7.9 9.0*	9.0* 9.0* 9.0*	3.7 4.2 4.9	5.9 8.3* 8.3*	2.5 2.8 3.3	3.8 6.0* 6.0*	2.1 2.3 2.7	3.2* 3.3* 3.3*	2.1 2.3 2.7	6.90	
-3.0	Stabilizers raised Stabilizer blade down 2 pt. outriggers down	7.1 8.0 9.8	10.9* 10.9* 10.9*	3.8 4.2 5.0	5.9 7.4* 7.4*					2.6 2.9 3.4	4.0 5.2* 5.2*	5.89
-4.5	Stabilizers raised Stabilizer blade down 2 pt. outriggers down											

Stick 2.45 m

m	Undercarriage	3.0 m		4.5 m		6.0 m		7.5 m		m		
		Stabilizers raised Stabilizer blade down 2 pt. outriggers down	Stabilizers raised Stabilizer blade down 2 pt. outriggers down	Stabilizers raised Stabilizer blade down 2 pt. outriggers down	Stabilizers raised Stabilizer blade down 2 pt. outriggers down	Stabilizers raised Stabilizer blade down 2 pt. outriggers down	Stabilizers raised Stabilizer blade down 2 pt. outriggers down	Stabilizers raised Stabilizer blade down 2 pt. outriggers down	Stabilizers raised Stabilizer blade down 2 pt. outriggers down			
9.0	Stabilizers raised Stabilizer blade down 2 pt. outriggers down											
7.5	Stabilizers raised Stabilizer blade down 2 pt. outriggers down									2.1* 2.1* 2.1*	5.20	
6.0	Stabilizers raised Stabilizer blade down 2 pt. outriggers down							3.1 3.2* 3.2*	3.2* 3.2* 3.2*	1.9* 1.9* 1.9*	6.56	
4.5	Stabilizers raised Stabilizer blade down 2 pt. outriggers down							3.0 3.3 3.8	4.0* 4.0* 4.0*	1.8* 1.8* 1.8*	7.35	
3.0	Stabilizers raised Stabilizer blade down 2 pt. outriggers down	8.1 8.8* 8.8*	8.8* 8.8* 8.8*	4.4 4.8 5.6	5.7* 5.7* 5.7*	2.8 3.1 3.6	4.2 4.7* 4.7*	2.0 2.2 2.5	2.9 2.9* 2.9*	1.8 1.9* 1.9*	7.76	
1.5	Stabilizers raised Stabilizer blade down 2 pt. outriggers down	5.2* 5.2* 5.2*	5.2* 5.2* 5.2*	4.0 4.4 5.2	6.2 7.2* 7.2*	2.6 2.9 3.4	4.0 5.4* 5.4*	1.9 2.1 2.4	2.9 3.7* 3.7*	1.7 1.9 2.0*	7.86	
0	Stabilizers raised Stabilizer blade down 2 pt. outriggers down	5.9* 5.9* 5.9*	5.9* 5.9* 5.9*	3.7 4.2 5.0	5.9 8.2* 8.2*	2.5 2.8 3.3	3.9 5.9* 5.9*	1.8 2.0 2.4	2.8 3.3* 3.3*	1.8 2.0 2.3*	7.65	
-1.5	Stabilizers raised Stabilizer blade down 2 pt. outriggers down	6.8 7.8 8.6*	8.6* 8.6* 8.6*	3.7 4.1 4.9	5.8 8.3* 8.3*	2.5 2.7 3.2	3.8 6.0* 6.0*	2.2 2.6 3.2	3.8 6.0* 6.0*	2.0 2.2 2.6	7.11	
-3.0	Stabilizers raised Stabilizer blade down 2 pt. outriggers down	7.0 8.0 9.7	11.2* 11.2* 11.2*	3.7 4.2 5.0	5.9 7.6* 7.6*	2.5 2.8 3.3	3.9 5.3* 5.3*			2.4 2.7 3.2	3.7 4.3* 4.3*	6.14
-4.5	Stabilizers raised Stabilizer blade down 2 pt. outriggers down									4.0 4.5 5.3*	5.3* 5.3* 5.3*	4.46

Stick 2.65 m

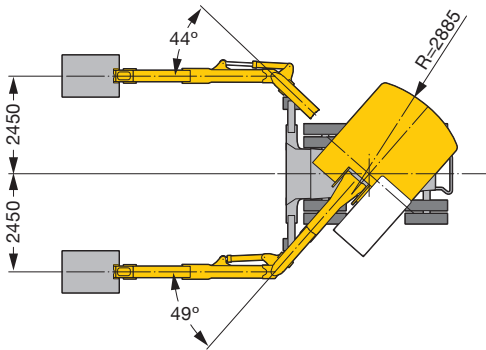
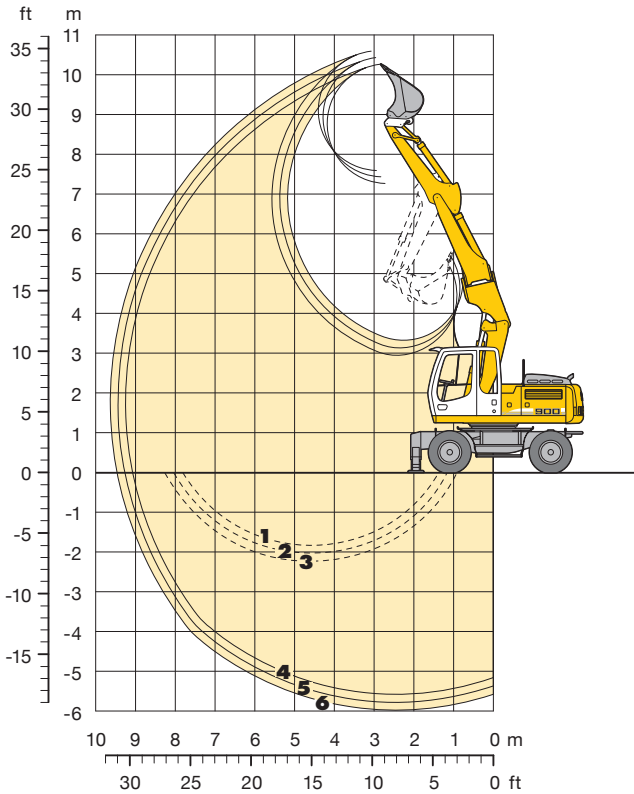
m	Undercarriage	3.0 m		4.5 m		6.0 m		7.5 m		m		
		Stabilizers raised Stabilizer blade down 2 pt. outriggers down	Stabilizers raised Stabilizer blade down 2 pt. outriggers down	Stabilizers raised Stabilizer blade down 2 pt. outriggers down	Stabilizers raised Stabilizer blade down 2 pt. outriggers down	Stabilizers raised Stabilizer blade down 2 pt. outriggers down	Stabilizers raised Stabilizer blade down 2 pt. outriggers down	Stabilizers raised Stabilizer blade down 2 pt. outriggers down	Stabilizers raised Stabilizer blade down 2 pt. outriggers down			
9.0	Stabilizers raised Stabilizer blade down 2 pt. outriggers down											
7.5	Stabilizers raised Stabilizer blade down 2 pt. outriggers down							1.9* 1.9* 1.9*	1.9* 1.9* 1.9*	5.49		
6.0	Stabilizers raised Stabilizer blade down 2 pt. outriggers down					3.1 3.2* 3.2*	3.2* 3.2* 3.2*	1.7* 1.7* 1.7*	1.7* 1.7* 1.7*	6.79		
4.5	Stabilizers raised Stabilizer blade down 2 pt. outriggers down					3.0 3.3 3.8	3.9* 3.9* 3.9*	1.9* 1.9* 1.9*	1.9* 1.6* 1.6*	7.56		
3.0	Stabilizers raised Stabilizer blade down 2 pt. outriggers down	8.1* 8.1* 8.1*	8.1* 8.1* 8.1*	4.4 4.9 5.5*	5.5* 5.5* 5.5*	2.8 3.1 3.6	4.2 4.5* 4.5*	1.9 2.2 2.5	2.9 3.2* 3.2*	1.7* 1.7* 1.7*	7.96	
1.5	Stabilizers raised Stabilizer blade down 2 pt. outriggers down	6.1* 6.1* 6.1*	6.1* 6.1* 6.1*	4.0 4.4 5.2	6.2 7.0* 7.0*	2.6 2.9 3.4	4.0 5.2* 5.2*	1.9 2.1 2.4	2.8 4.0* 4.0*	1.7 1.8* 1.8*	8.05	
0	Stabilizers raised Stabilizer blade down 2 pt. outriggers down	6.0* 6.0* 6.0*	6.0* 6.0* 6.0*	3.7 4.2 5.0	5.9 8.0* 8.0*	2.5 2.8 3.3	3.8 5.8* 5.8*	1.8 2.0 2.4	2.8 3.9* 3.9*	1.7 1.9 2.1*	7.85	
-1.5	Stabilizers raised Stabilizer blade down 2 pt. outriggers down	6.7 7.7 8.3*	8.3* 8.3* 8.3*	3.6 4.1 4.9	5.8 8.3* 8.3*	2.4 2.7 3.2	3.8 6.0* 6.0*	2.1 2.4	2.6* 2.6* 2.6*	2.1 2.2 2.6	7.32	
-3.0	Stabilizers raised Stabilizer blade down 2 pt. outriggers down	6.9 7.9 9.6	11.5* 11.5* 11.5*	3.7 4.1 4.9	5.8 7.7* 7.7*	2.5 2.8 3.2	3.8 5.5* 5.5*			2.3 2.5 3.0	3.5 3.7* 3.7*	6.39
-4.5	Stabilizers raised Stabilizer blade down 2 pt. outriggers down	7.2 8.2 8.6*	8.6* 8.6* 8.6*	3.9 4.4 5.1	5.7* 5.7* 5.7*					3.6 4.0 4.7	5.2* 5.2* 5.2*	4.80

Height
 Can be slewed through 360°
 In longitudinal position of undercarriage
 Max. reach
 * Limited by hydr. capacity

The lift capacities on the load hook of the Liebherr quick-change adapter 48 without grab attachment are stated in metric tons (t) and are valid on a firm, level supporting surface with blocked oscillating axle. These capacities can be slewed through 360° with the undercarriage in the transverse position. Capacities in the longitudinal position of the undercarriage (+/- 15°) are specified over the steering axle with the stabilizers raised and over the rigid axle with the stabilizers down. Indicated loads comply with the ISO 10567 standard and do not exceed 75% of tipping or 87% of hydraulic capacity, or are limited by the permissible load of the load hook on the quick-change adapter (max. 12 t). Without the quick-change adapter, lift capacities will increase by up to 226 kg. In accordance with the harmonised EU Standard EN 474-5, hydraulic excavators used for lifting operations must be equipped with pipe rupture protection devices on the hoist cylinders and an overload warning device.

Backhoe Attachment

with Adjustable Up/Down Plus Offset Boom 3.60 m



Digging Envelope with Quick Change Adapter

		4	5	6
Stick length	m	2.25	2.45	2.65
Max. digging depth	m	5.65	5.85	6.05
Max. reach at ground level	m	9.15	9.35	9.50
Max. dumping height	m	7.20	7.40	7.55
Max. teeth height	m	10.30	10.50	10.65
Min. attachment radius	m	2.85	2.80	2.85

- 1 stick 2.25 m
- 2 stick 2.45 m
- 3 stick 2.65 m
- at max. attachment offset with vertical ditch walls
- 4 stick 2.25 m
- 5 stick 2.45 m
- 6 stick 2.65 m
- with set straight boom

Digging Forces without Quick Change Adapter

		4	5	6
Max. digging force (ISO 6015)	kN	81.0	76.0	71.6
	t	8.3	7.7	7.3
Max. breakout force (ISO 6015)	kN	98.4	98.4	98.4
	t	10.0	10.0	10.0

Max. breakout force with ripper bucket 125.7 kN (12.8 t)
 Max. possible digging force (stick 1.70 m) 99.4 kN (10.1 t)

Operating Weight

The operating weight includes the basic machine with 8 tires plus spacer rings, hydr. adjustable offset boom 3.60 m, stick 2.25 m, quick change adapter 48 and bucket 1,050 mm/0.80 m³.

Undercarriage versions	Weight
A 900 C Litronic [®] with stabilizer blade	18,300 kg
A 900 C Litronic [®] with 2 pt. outriggers	18,600 kg
A 900 C Litronic [®] with stabilizer blade + 2 pt. outriggers	19,400 kg
A 900 C Litronic [®] with 4 pt. outriggers	19,600 kg
A 900 C EW Litronic [®] with stabilizer blade	18,400 kg
A 900 C EW Litronic [®] with 2 pt. outriggers	18,700 kg

Buckets Machine stability per ISO 10567* (75% of tipping capacity)

Cutting width mm	Capacity ISO 7451 ¹⁾ m ³	Weight kg	Stabilizers raised			Stabilizer blade down			2 point outriggers down			Stabilizer blade + 2 pt. outr. down			4 point outriggers down			EW stabilizers raised			EW stabilizer blade down			EW 2 point outriggers down		
			Stick length (m)			Stick length (m)			Stick length (m)			Stick length (m)			Stick length (m)			Stick length (m)			Stick length (m)			Stick length (m)		
			2.25	2.45	2.65	2.25	2.45	2.65	2.25	2.45	2.65	2.25	2.45	2.65	2.25	2.45	2.65	2.25	2.45	2.65	2.25	2.45	2.65	2.25	2.45	2.65
850 ²⁾	0.60	430	□	□	□	□	□	□	□	□	□	□	□	□	□	□	□	□	□	□	□	□	□	□	□	
1,050 ²⁾	0.80	510	■	■	■	△	△	△	□	□	□	△	△	△	□	□	□	△	△	△	□	□	□	△	△	
1,250 ²⁾	0.95	560	▲	▲	▲	■	■	■	□	△	■	□	△	■	■	■	■	■	■	□	△	■	□	△	■	
850 ³⁾	0.60	480	□	□	□	□	□	□	□	□	□	□	□	□	□	□	□	□	□	□	□	□	□	□	□	
1,050 ³⁾	0.80	570	■	■	■	△	△	△	□	□	□	△	△	△	□	□	□	△	△	△	□	□	□	△	△	
1,250 ³⁾	0.95	630	▲	▲	▲	■	■	■	△	△	■	△	△	■	■	■	■	■	■	□	△	■	□	△	■	
850 ⁴⁾	0.65	410	□	□	□	□	□	□	□	□	□	□	□	□	□	□	□	□	□	□	□	□	□	□	□	
1,050 ⁴⁾	0.85	490	■	■	■	△	△	△	□	□	□	△	△	△	□	□	□	△	△	△	□	□	□	△	△	
1,250 ⁴⁾	1.05	530	▲	▲	▲	■	■	■	△	△	■	△	△	■	■	■	■	■	■	□	△	■	□	△	■	

* Indicated loads are based on ISO 10567 and do not exceed 75% of tipping or 87% of hydraulic capacity, max. stick length without quick change adapter, lifted 360° on firm with blocked oscillating axle

¹⁾ comparable with SAE (heaped)

²⁾ Bucket with teeth ³⁾ Bucket with teeth in HD-version ⁴⁾ Bucket with cutting lip (also available in HD-version)

Max. material weight □ = ≤ 1.8 t/m³, △ = ≤ 1.5 t/m³, ■ = ≤ 1.2 t/m³, ▲ = not authorized

Lift Capacities

with Adjustable Up/Down Plus Offset Boom 3.60 m

Stick 2.25 m

m	Undercarriage	3.0 m		4.5 m		6.0 m		7.5 m		m	
		Height	Can be slewed through 360°	Height	Can be slewed through 360°	Height	Can be slewed through 360°	Height	Can be slewed through 360°		
9.0	Stabilizers raised										
	Stabilizer blade down										
	2 pt. outriggers down										
	Blade + 2 pt. down										
7.5	Stabilizers raised			4.0*	4.0*					2.2*	2.2*
	Stabilizer blade down			4.0*	4.0*					2.2*	2.2*
	2 pt. outriggers down			4.0*	4.0*					2.2*	2.2*
	Blade + 2 pt. down			4.0*	4.0*					2.2*	2.2*
6.0	Stabilizers raised			4.7*	4.7*	2.8	3.9*			2.0*	2.0*
	Stabilizer blade down			4.7*	4.7*	3.1	3.9*			2.0*	2.0*
	2 pt. outriggers down			4.7*	4.7*	3.8	3.9*			2.0*	2.0*
	Blade + 2 pt. down			4.7*	4.7*	3.9*	3.9*			2.0*	2.0*
4.5	Stabilizers raised	6.6*	6.6*	4.5	6.1*	2.9	4.5	1.7	2.0*	1.7	1.9*
	Stabilizer blade down	6.6*	6.6*	4.9*	6.1*	3.2	5.0*	1.9	2.0*	1.9*	1.9*
	2 pt. outriggers down	6.6*	6.6*	5.9	6.1*	3.9	5.0*	2.0*	2.0*	1.9*	1.9*
	Blade + 2 pt. down	6.6*	6.6*	6.1*	6.1*	4.7	5.0*	2.0*	2.0*	1.9*	1.9*
3.0	Stabilizers raised	7.6	11.2*	4.3	6.7	2.9	4.4	1.7	2.9	1.5	2.0*
	Stabilizer blade down	8.5	11.2*	4.8	7.2*	3.2*	5.4*	1.9	3.8*	1.7	2.0*
	2 pt. outriggers down	10.5	11.2*	5.7	7.2*	3.9	5.4*	2.4	3.8*	2.0*	2.0*
	Blade + 2 pt. down	11.2*	11.2*	6.9*	7.2*	4.6	5.4*	3.1	3.8*	2.0*	2.0*
1.5	Stabilizers raised	7.5	10.6*	4.2	6.6	2.7	4.4	1.7	2.8	1.4	2.1*
	Stabilizer blade down	8.3	10.6*	4.6	8.0*	3.0	5.8*	1.9	4.5*	1.6	2.1*
	2 pt. outriggers down	10.1*	10.8*	5.6	8.0*	3.7	5.8*	2.4	4.5*	2.1	2.1*
	Blade + 2 pt. down	10.6*	10.6*	6.8	8.0*	4.6	5.8*	3.0	4.5*	2.1*	2.1*
0	Stabilizers raised	7.4	12.4*	4.1	6.5	2.5	4.2	1.5	2.7	1.4	2.3*
	Stabilizer blade down	8.4	12.4*	4.6	8.1*	2.8*	5.8*	1.7	4.4*	1.6	2.3*
	2 pt. outriggers down	10.5	12.4*	5.7	8.1*	3.5	5.8*	2.3	4.4*	2.1	2.3*
	Blade + 2 pt. down	12.4*	12.4*	6.9	8.1*	4.4	5.8*	2.9	4.4*	2.3*	2.3*
-1.5	Stabilizers raised	6.9	12.8	3.8	6.6	2.3	3.9			1.5	2.3
	Stabilizer blade down	7.8	13.3*	4.3	8.3*	2.5	5.9*			1.8	2.9*
	2 pt. outriggers down	10.3	13.3*	5.4	8.3*	3.3	5.9*			2.3	2.9*
	Blade + 2 pt. down	13.2	13.3*	6.9	8.3*	4.1	5.9*			2.9*	2.9*
-3.0	Stabilizers raised	6.7	12.9	3.4	6.1	2.1	3.8			1.9	3.3*
	Stabilizer blade down	7.6	13.9*	3.6*	8.1*	2.4	4.3*			2.2	3.3*
	2 pt. outriggers down	10.1	13.9*	5.0	8.1*	3.1	4.3*			2.5*	3.3*
	Blade + 2 pt. down	13.7	13.9*	6.4	8.1*	4.0	4.3*			3.3*	3.3*
-4.5	Stabilizers raised	6.3	13.3*	3.3*	8.3*	2.5	5.9*			1.5	2.9*
	Stabilizer blade down	7.2	13.3*	3.3*	8.3*	2.5	5.9*			1.9	2.9*
	2 pt. outriggers down	9.6	13.3*	4.8	8.3*	3.3	5.9*			2.9*	2.9*
	Blade + 2 pt. down	10.2*	13.3*	4.9*	8.3*	3.3*	5.9*			2.9*	2.9*

Stick 2.45 m

m	Undercarriage	3.0 m		4.5 m		6.0 m		7.5 m		m	
		Height	Can be slewed through 360°	Height	Can be slewed through 360°	Height	Can be slewed through 360°	Height	Can be slewed through 360°		
9.0	Stabilizers raised									2.8*	2.8*
	Stabilizer blade down									2.8*	2.8*
	2 pt. outriggers down									2.8*	2.8*
	Blade + 2 pt. down									2.8*	2.8*
7.5	Stabilizers raised									2.0*	2.0*
	Stabilizer blade down									2.0*	2.0*
	2 pt. outriggers down									2.0*	2.0*
	Blade + 2 pt. down									2.0*	2.0*
6.0	Stabilizers raised									1.8*	1.8*
	Stabilizer blade down									1.8*	1.8*
	2 pt. outriggers down									1.8*	1.8*
	Blade + 2 pt. down									1.8*	1.8*
4.5	Stabilizers raised	5.4*	5.4*	4.5	5.5*	2.9	4.5	1.8	2.6*	1.6	1.7*
	Stabilizer blade down	5.4*	5.4*	5.0*	5.5*	3.2	4.9*	2.0	2.6*	1.7*	1.7*
	2 pt. outriggers down	5.4*	5.4*	5.5*	5.5*	3.9	4.9*	2.5	2.6*	1.7*	1.7*
	Blade + 2 pt. down	5.4*	5.4*	5.5*	5.5*	4.7*	4.9*	2.6*	2.6*	1.7*	1.7*
3.0	Stabilizers raised	7.7	11.1*	4.4	6.7	2.9*	4.4	1.8	2.9	1.4	1.8*
	Stabilizer blade down	8.6	11.1*	4.7	7.0*	3.2	5.3*	2.0	4.0*	1.6	1.8*
	2 pt. outriggers down	10.5	11.1*	5.7	7.0*	3.8	5.3*	2.5	4.0*	1.8*	1.8*
	Blade + 2 pt. down	11.1*	11.1*	6.9	7.0*	4.5	5.3*	3.1	4.0*	1.8*	1.8*
1.5	Stabilizers raised	7.5	10.8*	4.2	6.5	2.8	4.3	1.7	2.9	1.3	1.9*
	Stabilizer blade down	8.4*	10.8*	4.7	7.9*	3.1	5.7*	1.9	4.5*	1.5	1.9*
	2 pt. outriggers down	10.0	10.8*	5.6*	7.9*	3.7	5.7*	2.4	4.5*	1.9*	1.9*
	Blade + 2 pt. down	10.8*	10.8*	6.8*	7.9*	4.6	5.7*	3.0	4.5*	1.9*	1.9*
0	Stabilizers raised	7.5	12.1*	4.1	6.6	2.5	4.2	1.6	2.7	1.3	2.1*
	Stabilizer blade down	8.4	12.1*	4.6	8.0*	2.8	5.8*	1.8	4.4*	1.5	2.1*
	2 pt. outriggers down	10.2	12.1*	5.7	8.0*	3.5	5.8*	2.3	4.4*	2.0	2.1*
	Blade + 2 pt. down	12.1*	12.1*	6.7	8.0*	4.4	5.8*	2.9	4.4*	2.1*	2.1*
-1.5	Stabilizers raised	6.9	12.7*	3.8	6.6	2.3	3.9			1.5	2.5*
	Stabilizer blade down	7.8	13.2*	4.3	8.2*	2.6	5.9*			1.7	2.5*
	2 pt. outriggers down	10.3	13.2*	5.4	8.2*	3.3	5.9*			2.2	2.5*
	Blade + 2 pt. down	13.1*	13.2*	6.9	8.2*	4.1	5.9*			2.5*	2.5*
-3.0	Stabilizers raised	6.7	12.9	3.4	6.1	2.1	3.8			1.8	3.2
	Stabilizer blade down	7.6	13.8*	3.5	8.1*	2.4	4.8*			2.0	3.3*
	2 pt. outriggers down	10.1	13.8*	5.0	8.1*	3.1	4.8*			2.7	3.3*
	Blade + 2 pt. down	13.7	13.8*	6.5	8.1*	4.0	4.8*			3.3*	3.3*
-4.5	Stabilizers raised	6.3	13.3*	3.3*	8.3*	2.5	5.9*			1.5	2.5*
	Stabilizer blade down	7.2	13.3*	3.3*	8.3*	2.5	5.9*			1.9	2.5*
	2 pt. outriggers down	9.0*	13.3*	4.8	8.3*	3.3	5.9*			2.5*	2.5*
	Blade + 2 pt. down	9.0*	13.3*	4.8	8.3*	3.3	5.9*			2.5*	2.5*

Stick 2.65 m

m	Undercarriage	3.0 m		4.5 m		6.0 m		7.5 m		m	
		Height	Can be slewed through 360°	Height	Can be slewed through 360°	Height	Can be slewed through 360°	Height	Can be slewed through 360°		
9.0	Stabilizers raised									2.5*	2.5*
	Stabilizer blade down									2.5*	2.5*
	2 pt. outriggers down									2.5*	2.5*
	Blade + 2 pt. down									2.5*	2.5*
7.5	Stabilizers raised									1.8*	1.8*
	Stabilizer blade down									1.8*	1.8*
	2 pt. outriggers down									1.8*	1.8*
	Blade + 2 pt. down									1.8*	1.8*
6.0	Stabilizers raised									1.6*	1.6*
	Stabilizer blade down									1.6*	1.6*
	2 pt. outriggers down									1.6*	1.6*
	Blade + 2 pt. down									1.6*	1.6*
4.5	Stabilizers raised									1.6*	1.6*
	Stabilizer blade down									1.6*	1.6*
	2 pt. outriggers down									1.6*	1.6*
	Blade + 2 pt. down									1.6*	1.6*
3.0	Stabilizers raised	7.8	10.7*	4.3	6.6	2.9	4.3	1.8	3.0	1.3	1.6*
	Stabilizer blade down	8.4	10.7*	4.8	6.8*	3.1	5.2*	2.0	4.0*	1.5	1.6*
	2 pt. outriggers down	10.5	10.7*	5.6*	6.8*	3.8	5.2*	2.5	4.0*	1.6*	1.6*
	Blade + 2 pt. down	10.7*	10.7*	6.8*	6.8*	4.6	5.2*	3.1	4.0*	1.6*	1.6*
1.5	Stabilizers raised	7.5	10.8*	4.3	6.5	2.8	4.3	1.7	2.9*	1.3	1.7*
	Stabilizer blade down	8.0	10.8*	4.5	7.7*	3.1	5.6*	1.9	4.5*	1.4	1.7*
	2 pt. outriggers down	10.1	10.8*	5.5	7.7*	3.7	5.6*	2.4	4.5*	1.7*	1.7*
	Blade + 2 pt. down	10.8*	10.8*	6.7	7.7*	4.5	5.6*	3.0	4.5*	1.7*	1.7*
0	Stabilizers raised	7.6	11.7*	4.2	6.4*	2.6	4.2	1.6	2.7	1.3	1.9*
	Stabilizer blade down	8.3	11.7*	4.6	8.0*	2.8	5.8*	1.8	4.4*	1.4	1.9*
	2 pt. outriggers down	10.2	11.7*	5.6	8.0*	3.6	5.8*	2.3	4.4*	1.9*	1.9*
	Blade + 2 pt. down	11.7*	11.7*	6.7	8.0*	4.4	5.8*	2.9	4.4*	1.9*	1.9*
-1.5	Stabilizers raised	6.9	12.5	3.8	6.6	2.3	3.9	1.4	2.6	1.4	2.3*
	Stabilizer blade down	7.8	13.1*	4.3	8.1*	2.6	5.9*	1.7	3.8*	1.6	2.3*
	2 pt. outriggers down	10.3	13.1*	5.4	8.1*	3.3	5.9*	2.2	3.8*	2.1	2.3*
	Blade + 2 pt. down	12.9	13.1*	6.9	8.1*	4.2	5.9*	2.8	3.8*	2.3*	2.3*
-3.0	Stabilizers raised	6.7	12.9	3.5	6.2	2.1	3.8			1.7	3.0*
	Stabilizer blade down	7.6	13.7*	3.9	8.3*	2.4	5.1*			1.9	3.0*
	2 pt. outriggers down	10.0	13.7*	5.0	8.3*	3.1	5.1*			2.5	3.0*
	Blade + 2 pt. down	13.6	13.7*	6.5	8.3*	4.0	5.1*			3.0*	3.0*
-4.5	Stabilizers raised	6.3	10.2*	3.3	4.9*					3.2	4.8*
	Stabilizer blade down	7.2	10.2*	3.7	4.9*					3.6	4.8*
	2 pt. outriggers down	9.6	10.2*	4.8	4.9*					4.7	4.8*
	Blade + 2 pt. down	10.2*	10.2*	4.9*	4.9*					4.8*	4.8*

 Height
  Can be slewed through 360°
  In longitudinal position of undercarriage
  Max. reach
 * Limited by hydr. capacity

The lift capacities on the load hook of the Liebherr quick-change adapter 48 without grab attachment are stated in metric tons (t) and are valid on a firm, level supporting surface with blocked oscillating axle. These capacities can be slewed through 360° with the undercarriage in the transverse position. Capacities in the longitudinal position of the undercarriage (+/- 15°) are specified over the steering axle with the stabilisers raised and over the rigid axle with the stabilisers down. The values apply when the adjusting cylinder is in the optimal position. Indicated loads comply with the ISO 10567 standard and do not exceed 75% of tipping or 87% of hydraulic capacity, or are limited by the permissible load of the load hook on the quick-change adapter (max. 12 t). Without the quick-change adapter, lift capacities will increase by up to 226 kg.

In accordance with the harmonised EU Standard EN 474-5, hydraulic excavators used for lifting operations must be equipped with pipe rupture protection devices on the hoist cylinders and an overload warning device.

Lift Capacities

with Adjustable Up/Down Plus Offset Boom 3.60 m EW-Undercarriage

Stick 2.25 m

m	Undercarriage	3.0 m		4.5 m		6.0 m		7.5 m		m
9.0	Stabilizers raised Stabilizer blade down 2 pt. outriggers down									
7.5	Stabilizers raised Stabilizer blade down 2 pt. outriggers down			4.0*	4.0*			2.2*	2.2*	5.42
6.0	Stabilizers raised Stabilizer blade down 2 pt. outriggers down			4.7*	4.7*	3.1	3.9*	2.0*	2.0*	6.74
4.5	Stabilizers raised Stabilizer blade down 2 pt. outriggers down	6.6*	6.6*	4.9*	6.1*	3.2	4.5	1.9	2.0*	7.51
3.0	Stabilizers raised Stabilizer blade down 2 pt. outriggers down	8.5	11.2*	4.8	6.7*	3.2*	4.4	1.9	2.9	7.91
1.5	Stabilizers raised Stabilizer blade down 2 pt. outriggers down	8.3	10.6*	4.6	6.6*	3.0	4.4	1.9	2.8	8.01
0	Stabilizers raised Stabilizer blade down 2 pt. outriggers down	8.4	12.4*	4.6	6.6	2.8	4.2	1.7	2.7	7.80
-1.5	Stabilizers raised Stabilizer blade down 2 pt. outriggers down	7.8	12.9	4.3	6.6	2.5	3.9	1.7	2.8	7.28
-3.0	Stabilizers raised Stabilizer blade down 2 pt. outriggers down	7.6	13.0	3.8	6.1	2.4	3.8	2.2	3.3*	6.34
-4.5	Stabilizers raised Stabilizer blade down 2 pt. outriggers down									

Stick 2.45 m

m	Undercarriage	3.0 m		4.5 m		6.0 m		7.5 m		m
9.0	Stabilizers raised Stabilizer blade down 2 pt. outriggers down									3.38
7.5	Stabilizers raised Stabilizer blade down 2 pt. outriggers down			3.9*	3.9*			2.0*	2.0*	5.72
6.0	Stabilizers raised Stabilizer blade down 2 pt. outriggers down			4.3*	4.3*	3.2	3.8*	1.8*	1.8*	6.97
4.5	Stabilizers raised Stabilizer blade down 2 pt. outriggers down	5.4*	5.4*	5.0*	5.5*	3.2	4.5	2.0	2.6*	7.72
3.0	Stabilizers raised Stabilizer blade down 2 pt. outriggers down	8.6	11.1*	4.7	6.7	3.2	4.4	2.0	2.9	8.11
1.5	Stabilizers raised Stabilizer blade down 2 pt. outriggers down	8.4*	10.8*	4.7	6.5	3.1	4.3	1.9	2.9	8.20
0	Stabilizers raised Stabilizer blade down 2 pt. outriggers down	8.4	12.1*	4.6	6.6	2.8	4.2	1.8	2.7	8.01
-1.5	Stabilizers raised Stabilizer blade down 2 pt. outriggers down	7.8	12.7*	4.3	6.6	2.6	3.9	1.7	2.5*	7.49
-3.0	Stabilizers raised Stabilizer blade down 2 pt. outriggers down	7.6	13.0	3.9	6.2	2.4	3.8	2.0	3.2	6.58
-4.5	Stabilizers raised Stabilizer blade down 2 pt. outriggers down							4.9	6.1*	3.79

Stick 2.65 m

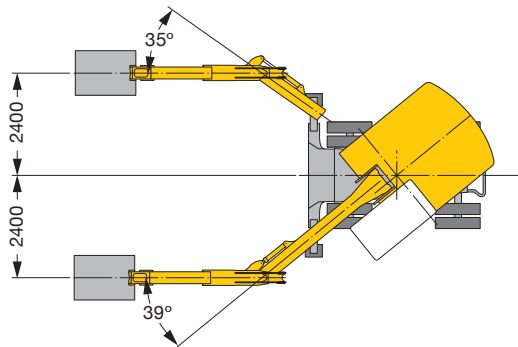
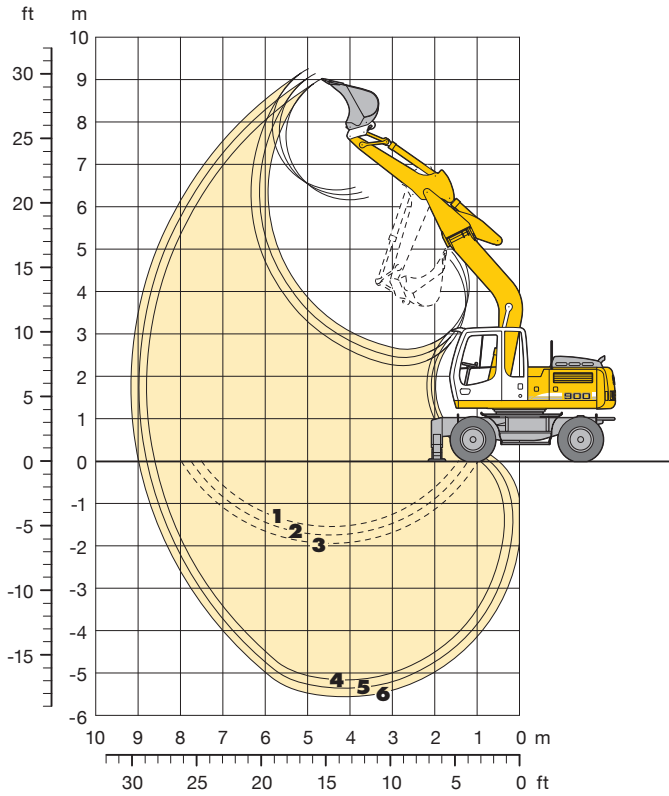
m	Undercarriage	3.0 m		4.5 m		6.0 m		7.5 m		m
9.0	Stabilizers raised Stabilizer blade down 2 pt. outriggers down							2.5*	2.5*	3.86
7.5	Stabilizers raised Stabilizer blade down 2 pt. outriggers down			3.7*	3.7*			1.8*	1.8*	6.00
6.0	Stabilizers raised Stabilizer blade down 2 pt. outriggers down			4.0*	4.0*	3.2	3.7*	1.6*	1.6*	7.20
4.5	Stabilizers raised Stabilizer blade down 2 pt. outriggers down			4.9*	4.9*	3.2	4.5*	2.0	2.9*	7.93
3.0	Stabilizers raised Stabilizer blade down 2 pt. outriggers down	8.4	10.7*	4.8	6.7	3.1	4.4	2.0	3.0	8.31
1.5	Stabilizers raised Stabilizer blade down 2 pt. outriggers down	8.0	10.8*	4.5	6.5	3.1	4.4	1.9	2.9*	8.40
0	Stabilizers raised Stabilizer blade down 2 pt. outriggers down	8.3	11.7*	4.6	6.4*	2.8	4.2	1.8	2.8	8.21
-1.5	Stabilizers raised Stabilizer blade down 2 pt. outriggers down	7.8	12.5	4.3	6.6	2.6	4.0	1.6	2.7	7.71
-3.0	Stabilizers raised Stabilizer blade down 2 pt. outriggers down	7.6	12.9	3.9	6.2	2.4	3.8	1.9	3.0*	6.83
-4.5	Stabilizers raised Stabilizer blade down 2 pt. outriggers down							3.6	4.8*	4.55

Height Can be slewed through 360° In longitudinal position of undercarriage Max. reach * Limited by hydr. capacity

The lift capacities on the load hook of the Liebherr quick-change adapter 48 without grab attachment are stated in metric tons (t) and are valid on a firm, level supporting surface with blocked oscillating axle. These capacities can be slewed through 360° with the undercarriage in the transverse position. Capacities in the longitudinal position of the undercarriage (+/- 15°) are specified over the steering axle with the stabilizers raised and over the rigid axle with the stabilizers down. The values apply when the adjusting cylinder is in the optimal position. Indicated loads comply with the ISO 10567 standard and do not exceed 75% of tipping or 87% of hydraulic capacity, or are limited by the permissible load of the load hook on the quick-change adapter (max. 12 t). Without the quick-change adapter, lift capacities will increase by up to 226 kg. In accordance with the harmonised EU Standard EN 474-5, hydraulic excavators used for lifting operations must be equipped with pipe rupture protection devices on the hoist cylinders and an overload warning device.

Backhoe Attachment

with Adjustable Offset Boom 4.90 m



Digging Envelope with Quick Change Adapter

		4	5	6
Stick length	m	2.25	2.45	2.65
Max. digging depth	m	5.20	5.40	5.60
Max. reach at ground level	m	8.65	8.85	9.05
Max. dumping height	m	6.20	6.30	6.45
Max. teeth height	m	9.05	9.15	9.30
Min. attachment radius	m	3.55	3.20	3.25

1 stick 2.25 m
2 stick 2.45 m
3 stick 2.65 m
 at max. attachment offset with vertical ditch walls

4 stick 2.25 m
5 stick 2.45 m
6 stick 2.65 m
 with set straight boom

Digging Forces without Quick Change Adapter

		4	5	6
Max. digging force (ISO 6015)	kN	81.0	76.0	71.6
	t	8.3	7.7	7.3
Max. breakout force (ISO 6015)	kN	98.4	98.4	98.4
	t	10.0	10.0	10.0

Max. breakout force with ripper bucket: 125.7 kN (12.8 t)
 Max. possible digging force (stick 1.70 m): 99.4 kN (10.1 t)

Operating Weight

The operating weight includes the basic machine with 8 tires plus spacer rings, adjustable offset boom 4.90 m, stick 2.25 m, quick change adapter 48 and bucket 1,050 mm/0.80 m³.

Undercarriage versions	Weight
A 900 C Litronic [®] with stabilizer blade	17,700 kg
A 900 C Litronic [®] with 2 pt. outriggers	18,000 kg
A 900 C Litronic [®] with stabilizer blade + 2 pt. outriggers	18,800 kg
A 900 C Litronic [®] with 4 pt. outriggers	19,000 kg
A 900 C EW Litronic [®] with stabilizer blade	17,800 kg
A 900 C EW Litronic [®] with 2 pt. outriggers	18,100 kg

Buckets Machine stability per ISO 10567* (75% of tipping capacity)

Cutting width mm	Capacity ISO 7451 ¹⁾ m ³	Weight kg	Stabilizers raised			Stabilizer blade down			2 point outriggers down			Stabilizer blade + 2 pt. outr. down			4 point outriggers down			EW stabilizers raised			EW stabilizer blade down			EW 2 point outriggers down		
			Stick length (m)			Stick length (m)			Stick length (m)			Stick length (m)			Stick length (m)			Stick length (m)			Stick length (m)			Stick length (m)		
			2.25	2.45	2.65	2.25	2.45	2.65	2.25	2.45	2.65	2.25	2.45	2.65	2.25	2.45	2.65	2.25	2.45	2.65	2.25	2.45	2.65	2.25	2.45	2.65
850 ²⁾	0.60	430	□	□	□	□	□	□	□	□	□	□	□	□	□	□	□	□	□	□	□	□	□	□	□	
1,050 ²⁾	0.80	510	△	△	△	△	△	△	△	△	△	△	△	△	△	△	△	△	△	△	△	△	△	△	△	
1,250 ²⁾	0.95	560	■	■	■	□	△	■	□	△	■	□	△	■	□	△	■	□	△	■	□	△	■	□	△	
850 ³⁾	0.60	480	□	□	□	□	□	□	□	□	□	□	□	□	□	□	□	□	□	□	□	□	□	□	□	
1,050 ³⁾	0.80	570	△	△	△	□	□	△	□	□	△	□	□	△	□	□	△	□	□	△	□	□	△	□	□	
1,250 ³⁾	0.95	630	■	■	■	□	△	■	□	△	■	□	△	■	□	△	■	□	△	■	□	△	■	□	△	
850 ⁴⁾	0.65	410	□	□	□	□	□	□	□	□	□	□	□	□	□	□	□	□	□	□	□	□	□	□	□	
1,050 ⁴⁾	0.85	490	△	△	△	□	□	△	□	□	△	□	□	△	□	□	△	□	□	△	□	□	△	□	□	
1,250 ⁴⁾	1.05	530	■	■	■	△	△	■	△	△	■	△	△	■	△	△	■	△	△	■	△	△	■	△	△	

* Indicated loads are based on ISO 10567 and do not exceed 75% of tipping or 87% of hydraulic capacity, max. stick length without quick change adapter, lifted 360° on firm with blocked oscillating axle

¹⁾ comparable with SAE (heaped)

²⁾ Bucket with teeth ³⁾ Bucket with teeth in HD-version ⁴⁾ Bucket with cutting lip (also available in HD-version)

Max. material weight □ = ≤ 1.8 t/m³, △ = ≤ 1.5 t/m³, ■ = ≤ 1.2 t/m³, ▲ = not authorized

Lift Capacities

with Adjustable Offset Boom 4.90 m

Stick 2.25 m

m	Undercarriage	3.0 m		4.5 m		6.0 m		7.5 m		m	
		Icon	Icon	Icon	Icon	Icon	Icon	Icon	Icon		
9.0	Stabilizers raised										
	Stabilizer blade down										
	2 pt. outriggers down										
	Blade + 2 pt. down										
7.5	Stabilizers raised								2.2'	2.2'	
	Stabilizer blade down								2.2'	2.2'	
	2 pt. outriggers down								2.2'	2.2'	
	Blade + 2 pt. down								2.2'	2.2'	
6.0	Stabilizers raised								1.9'	1.9'	
	Stabilizer blade down								1.9'	1.9'	
	2 pt. outriggers down								1.9'	1.9'	
	Blade + 2 pt. down								1.9'	1.9'	
4.5	Stabilizers raised								1.9'	1.9'	
	Stabilizer blade down								1.9'	1.9'	
	2 pt. outriggers down								1.9'	1.9'	
	Blade + 2 pt. down								1.9'	1.9'	
3.0	Stabilizers raised	7.1	9.8*	3.9	6.3*	2.5	4.2		1.8	1.9*	
	Stabilizer blade down	8.0	9.8*	4.3	6.3*	2.8	5.0*		1.9*	1.9*	
	2 pt. outriggers down	9.8*	9.8*	5.5	6.3*	3.5	5.0*		1.9*	1.9*	
	Blade + 2 pt. down	9.8*	9.8*	6.3*	6.3*	4.4	5.0*		1.9*	1.9*	
1.5	Stabilizers raised	5.8*	5.8*	3.5	6.1	2.3	3.9	1.6	2.1*	1.6	2.1*
	Stabilizer blade down	5.8*	5.8*	3.9	7.6*	2.6	5.6*	1.8	2.1*	1.8	2.1*
	2 pt. outriggers down	5.8*	5.8*	5.0	7.6*	3.3	5.6*	2.1*	2.1*	2.1*	2.1*
	Blade + 2 pt. down	5.8*	5.8*	6.4	7.6*	4.2	5.6*	2.1*	2.1*	2.1*	2.1*
0	Stabilizers raised	5.7	6.8*	3.2	5.8	2.2	3.8		1.6	2.5*	
	Stabilizer blade down	6.6	6.8*	3.6	8.2*	2.4	5.9*		1.9	2.5*	
	2 pt. outriggers down	6.8*	6.8*	4.7	8.2*	3.1	5.9*		2.5*	2.5*	
	Blade + 2 pt. down	6.8*	6.8*	6.1	8.2*	4.0	5.9*		2.5*	2.5*	
-1.5	Stabilizers raised	5.8	9.9*	3.2	5.7	2.1	3.7		1.8	3.2*	
	Stabilizer blade down	6.6	9.9*	3.6	8.0*	2.4	5.8*		2.1	3.3*	
	2 pt. outriggers down	8.9	9.9*	4.6	8.0*	3.1	5.8*		2.7	3.3*	
	Blade + 2 pt. down	9.9*	9.9*	6.1	8.0*	4.0	5.8*		3.3*	3.3*	
-3.0	Stabilizers raised	6.0	9.9*	3.2	5.8				2.4	4.1	
	Stabilizer blade down	6.8	9.9*	3.6	6.8*				2.7	5.1*	
	2 pt. outriggers down	9.1	9.9*	4.7	6.8*				3.4	5.1*	
	Blade + 2 pt. down	9.9*	9.9*	6.1	6.8*				4.4	5.1*	
-4.5	Stabilizers raised	9.9*	9.9*	7.9	8.0*	5.0	5.8*		5.1*	5.1*	
	Stabilizer blade down										
	2 pt. outriggers down										
	Blade + 2 pt. down										

Stick 2.45 m

m	Undercarriage	3.0 m		4.5 m		6.0 m		7.5 m		m	
		Icon	Icon	Icon	Icon	Icon	Icon	Icon	Icon		
9.0	Stabilizers raised										
	Stabilizer blade down										
	2 pt. outriggers down										
	Blade + 2 pt. down										
7.5	Stabilizers raised									1.9'	1.9'
	Stabilizer blade down									1.9'	1.9'
	2 pt. outriggers down									1.9'	1.9'
	Blade + 2 pt. down									1.9'	1.9'
6.0	Stabilizers raised									1.9'	1.9'
	Stabilizer blade down									1.7'	1.7'
	2 pt. outriggers down									1.7'	1.7'
	Blade + 2 pt. down									1.7'	1.7'
4.5	Stabilizers raised									1.7'	1.7'
	Stabilizer blade down									1.7'	1.7'
	2 pt. outriggers down									1.7'	1.7'
	Blade + 2 pt. down									1.7'	1.7'
3.0	Stabilizers raised	7.3	9.2*	3.9	6.0*	2.5	4.2	1.7	2.2*	1.7	1.7*
	Stabilizer blade down	8.2	9.2*	4.4	6.0*	2.8	4.8*	1.9	2.2*	1.7	1.7*
	2 pt. outriggers down	9.2*	9.2*	5.5	6.0*	3.5	4.9*	2.2*	2.2*	1.7	1.7*
	Blade + 2 pt. down	9.2*	9.2*	6.0*	6.0*	4.4	4.9*	2.2*	2.2*	1.7	1.7*
1.5	Stabilizers raised	6.1	6.7*	3.5	6.1	2.3	3.9	1.6	2.8	1.6	1.9*
	Stabilizer blade down	6.7*	6.7*	3.9	7.4*	2.6	5.5*	1.8	2.9*	1.7	1.9*
	2 pt. outriggers down	6.7*	6.7*	5.0	7.4*	3.3	5.5*	2.3	2.9*	1.9*	1.9*
	Blade + 2 pt. down	6.7*	6.7*	6.5	7.4*	4.2	5.5*	2.9*	2.9*	1.9*	1.9*
0	Stabilizers raised	5.7	6.9*	3.2	5.8	2.2	3.8		1.6	2.2*	
	Stabilizer blade down	6.5	6.9*	3.6	8.1*	2.4	5.8*		1.8	2.2*	
	2 pt. outriggers down	6.9*	6.9*	4.7	8.1*	3.1	5.8*		2.2*	2.2*	
	Blade + 2 pt. down	6.9*	6.9*	6.1	8.1*	4.0	5.8*		2.2*	2.2*	
-1.5	Stabilizers raised	5.7	9.5*	3.1	5.7	2.1	3.7		1.7	2.9*	
	Stabilizer blade down	6.5	9.5*	3.5	8.0*	2.4	5.8*		1.9	2.9*	
	2 pt. outriggers down	8.8	9.5*	4.6	8.0*	3.1	5.8*		2.5	2.9*	
	Blade + 2 pt. down	9.5*	9.5*	6.0	8.0*	3.9	5.8*		2.9*	2.9*	
-3.0	Stabilizers raised	5.9	10.3*	3.2	5.7				2.2	3.8*	
	Stabilizer blade down	6.7	10.3*	3.6	7.0*				2.5	4.7*	
	2 pt. outriggers down	9.0	10.3*	4.7	7.0*				3.2	4.7*	
	Blade + 2 pt. down	10.3*	10.3*	6.1	7.0*				4.1	4.7*	
-4.5	Stabilizers raised	10.3*	10.3*	7.0*	7.0*				4.7*	4.7*	
	Stabilizer blade down										
	2 pt. outriggers down										
	Blade + 2 pt. down										

Stick 2.65 m

m	Undercarriage	3.0 m		4.5 m		6.0 m		7.5 m		m	
		Icon	Icon	Icon	Icon	Icon	Icon	Icon	Icon		
9.0	Stabilizers raised										
	Stabilizer blade down										
	2 pt. outriggers down										
	Blade + 2 pt. down										
7.5	Stabilizers raised									1.8'	1.8'
	Stabilizer blade down									1.8'	1.8'
	2 pt. outriggers down									1.8'	1.8'
	Blade + 2 pt. down									1.8'	1.8'
6.0	Stabilizers raised									1.6'	1.6'
	Stabilizer blade down									1.6'	1.6'
	2 pt. outriggers down									1.6'	1.6'
	Blade + 2 pt. down									1.6'	1.6'
4.5	Stabilizers raised									1.5'	1.5'
	Stabilizer blade down									1.5'	1.5'
	2 pt. outriggers down									1.5'	1.5'
	Blade + 2 pt. down									1.5'	1.5'
3.0	Stabilizers raised	7.4	8.5*	4.0	5.8*	2.5	4.2	1.7	2.6*	1.6'	1.6'
	Stabilizer blade down	8.4	8.5*	4.4	5.8*	2.8	4.7*	1.9	2.6*	1.8'	1.6'
	2 pt. outriggers down	8.5*	8.5*	5.5	5.8*	3.5	4.7*	2.4	2.6*	1.8'	1.6'
	Blade + 2 pt. down	8.5*	8.5*	5.8*	5.8*	4.4	4.7*	2.6*	2.6*	1.6'	1.6'
1.5	Stabilizers raised	6.1	7.7*	3.5	6.1	2.3	3.9	1.6	2.8	1.5	1.7*
	Stabilizer blade down	7.7*	7.7*	3.9	7.2*	2.6	5.3*	1.8	3.3*	1.7	1.7*
	2 pt. outriggers down	7.7*	7.7*	5.0	7.2*	3.3	5.3*	2.3	3.3*	1.7*	1.7*
	Blade + 2 pt. down	7.7*	7.7*	6.5	7.2*	4.2	5.3*	3.0	3.3*	1.7*	1.7*
0	Stabilizers raised	5.7	7.0*	3.2	5.8	2.1	3.8	1.5	2.7	1.5	2.0*
	Stabilizer blade down	6.5	7.0*	3.6	8.0*	2.4	5.8*	1.7	3.0*	1.7	2.0*
	2 pt. outriggers down	7.0*	7.0*	4.7	8.0*	3.1	5.8*	2.2	3.0*	2.0*	2.0*
	Blade + 2 pt. down	7.0*	7.0*	6.1	8.0*	4.0	5.8*	2.9	3.0*	2.0*	2.0*
-1.5	Stabilizers raised	5.6	9.1*	3.1	5.6	2.1	3.7		1.6	2.6*	
	Stabilizer blade down	6.5	9.1*	3.5	8.0*	2.3	5.8*		1.8	2.6*	
	2 pt. outriggers down	8.8	9.1*	4.6	8.0*	3.0	5.8*		2.4	2.6*	
	Blade + 2 pt. down	9.1*	9.1*	6.0	8.0*	3.9	5.8*		2.6*	2.6*	
-3.0	Stabilizers raised	5.8	10.6*	3.1	5.7	2.1	3.7		2.0	3.6	
	Stabilizer blade down	6.6	10.6*	3.5	7.2*	2.4	5.0*		2.3	3.9*	
	2 pt. outriggers down	8.9	10.6*	4.6	7.2*	3.1	5.0*		3.0	3.9*	
	Blade + 2 pt. down	10.6*	10.6*	6.0	7.2*	3.9	5.0*		3.8	3.9*	
-4.5	Stabilizers raised	10.6*	10.6*	7.2*	7.2*	5.0	5.0*		3.9*	3.9*	
	Stabilizer blade down										
	2 pt. outriggers down										
	Blade + 2 pt. down										

Height
 Can be slewed through 360°
 In longitudinal position of undercarriage
 Max. reach
 * Limited by hydr. capacity

The lift capacities on the load hook of the Liebherr quick-change adapter 48 without grab attachment are stated in metric tons (t) and are valid on a firm, level supporting surface with blocked oscillating axle. These capacities can be slewed through 360° with the undercarriage in the transverse position. Capacities in the longitudinal position of the undercarriage (+/- 15°) are specified over the steering axle with the stabilizers raised and over the rigid axle with the stabilizers down. Indicated loads comply with the ISO 10567 standard and do not exceed 75% of tipping or 87% of hydraulic capacity, or are limited by the permissible load of the load hook on the quick-change adapter (max. 12 t). Without the quick-change adapter, lift capacities will increase by up to 226 kg. In accordance with the harmonised EU Standard EN 474-5, hydraulic excavators used for lifting operations must be equipped with pipe rupture protection devices on the hoist cylinders and an overload warning device.

Lift Capacities

with Adjustable Offset Boom 4.90 m EW-Undercarriage

Stick 2.25 m





m	Undercarriage	3.0 m		4.5 m		6.0 m		7.5 m		m
		Stabilizers raised Stabilizer blade down 2 pt. outriggers down	Stabilizers raised Stabilizer blade down 2 pt. outriggers down	Stabilizers raised Stabilizer blade down 2 pt. outriggers down	Stabilizers raised Stabilizer blade down 2 pt. outriggers down	Stabilizers raised Stabilizer blade down 2 pt. outriggers down	Stabilizers raised Stabilizer blade down 2 pt. outriggers down	Stabilizers raised Stabilizer blade down 2 pt. outriggers down	Stabilizers raised Stabilizer blade down 2 pt. outriggers down	
9.0	Stabilizers raised Stabilizer blade down 2 pt. outriggers down									
7.5	Stabilizers raised Stabilizer blade down 2 pt. outriggers down							2.2' 2.2' 2.2'	2.2' 2.2' 2.2'	4.62
6.0	Stabilizers raised Stabilizer blade down 2 pt. outriggers down					2.3' 2.3' 2.3'	2.3' 2.3' 2.3'	1.9' 1.9' 1.9'	1.9' 1.9' 1.9'	6.12
4.5	Stabilizers raised Stabilizer blade down 2 pt. outriggers down			4.8 5.0' 5.0'	5.0' 5.0' 5.0'	3.0 3.3 3.8	4.4 4.4' 4.4'	1.9' 1.9' 1.9'	1.9' 1.9' 1.9'	6.96
3.0	Stabilizers raised Stabilizer blade down 2 pt. outriggers down	8.0 9.1 9.8*	8.8' 9.8' 9.8'	4.3 4.8 5.6	6.3' 6.3' 6.3'	2.8 3.1 3.6	4.2 5.0' 5.0'	1.8 1.9' 1.9'	2.1' 2.1' 2.1'	7.40
1.5	Stabilizers raised Stabilizer blade down 2 pt. outriggers down	5.8' 5.8' 5.8'	5.8' 5.8' 5.8'	3.9 4.4 5.2	6.1 7.6' 7.6'	2.6 2.9 3.4	4.0 5.6' 5.6'	1.8 2.0 2.1*	2.1' 2.1' 2.1'	7.50
0	Stabilizers raised Stabilizer blade down 2 pt. outriggers down	6.6 6.8' 6.8'	6.8' 6.8' 6.8'	3.6 4.1 4.9	5.8 8.2' 8.2'	2.4 2.7 3.2	3.8 5.9' 5.9'	1.8 2.1 2.5	2.5' 2.5' 2.5'	7.28
-1.5	Stabilizers raised Stabilizer blade down 2 pt. outriggers down	6.6 7.6 9.4	9.9' 9.9' 9.9'	3.6 4.0 4.8	5.7 8.0' 8.0'	2.4 2.7 3.2	3.7 5.8' 5.8'	2.1 2.3 2.7	3.2 3.3' 3.3'	6.71
-3.0	Stabilizers raised Stabilizer blade down 2 pt. outriggers down	6.8 7.8 9.6	9.9' 9.9' 9.9'	3.6 4.1 4.9	5.8 6.8' 6.8'			2.7 3.0 3.5	4.1 5.1' 5.1'	5.67
-4.5	Stabilizers raised Stabilizer blade down 2 pt. outriggers down									

Stick 2.45 m

m	Undercarriage	3.0 m		4.5 m		6.0 m		7.5 m		m
		Stabilizers raised Stabilizer blade down 2 pt. outriggers down	Stabilizers raised Stabilizer blade down 2 pt. outriggers down	Stabilizers raised Stabilizer blade down 2 pt. outriggers down	Stabilizers raised Stabilizer blade down 2 pt. outriggers down	Stabilizers raised Stabilizer blade down 2 pt. outriggers down	Stabilizers raised Stabilizer blade down 2 pt. outriggers down	Stabilizers raised Stabilizer blade down 2 pt. outriggers down	Stabilizers raised Stabilizer blade down 2 pt. outriggers down	
9.0	Stabilizers raised Stabilizer blade down 2 pt. outriggers down									
7.5	Stabilizers raised Stabilizer blade down 2 pt. outriggers down								1.9' 1.9' 1.9'	4.93
6.0	Stabilizers raised Stabilizer blade down 2 pt. outriggers down							2.7' 2.7' 2.7'	2.7' 2.7' 2.7'	6.35
4.5	Stabilizers raised Stabilizer blade down 2 pt. outriggers down							4.7' 4.7' 4.7'	3.0 3.3 3.8	7.17
3.0	Stabilizers raised Stabilizer blade down 2 pt. outriggers down	8.2 9.2' 9.2'	9.2' 9.2' 9.2'	4.4 4.9 5.7	6.0' 6.0' 6.0'	2.8 3.1 3.6	4.2 4.9' 4.9'	1.9 2.1 2.2*	2.2' 2.2' 2.2'	7.59
1.5	Stabilizers raised Stabilizer blade down 2 pt. outriggers down	6.7' 6.7' 6.7'	6.7' 6.7' 6.7'	3.9 4.4 5.2	6.1 7.4' 7.4'	2.6 2.9 3.4	4.0 5.5' 5.5'	1.8 2.0 2.4	2.8 2.9' 2.9'	7.69
0	Stabilizers raised Stabilizer blade down 2 pt. outriggers down	6.5 6.9' 6.9'	6.9' 6.9' 6.9'	3.6 4.1 4.9	5.8 8.1' 8.1'	2.4 2.7 3.2	3.8 5.8' 5.8'	1.8 2.0 2.5	2.2' 2.2' 2.2'	7.48
-1.5	Stabilizers raised Stabilizer blade down 2 pt. outriggers down	6.5 7.5 9.3	9.5' 9.5' 9.5'	3.5 4.0 4.8	5.7 8.0' 8.0'	2.4 2.7 3.2	3.7 5.8' 5.8'	1.9 2.2 2.6	2.9' 2.9' 2.9'	6.92
-3.0	Stabilizers raised Stabilizer blade down 2 pt. outriggers down	6.7 7.7 9.5	10.3' 10.3' 10.3'	3.6 4.0 4.8	5.8 7.0' 7.0'			2.5 2.8 3.3	3.9 4.7' 4.7'	5.92
-4.5	Stabilizers raised Stabilizer blade down 2 pt. outriggers down									

Stick 2.65 m

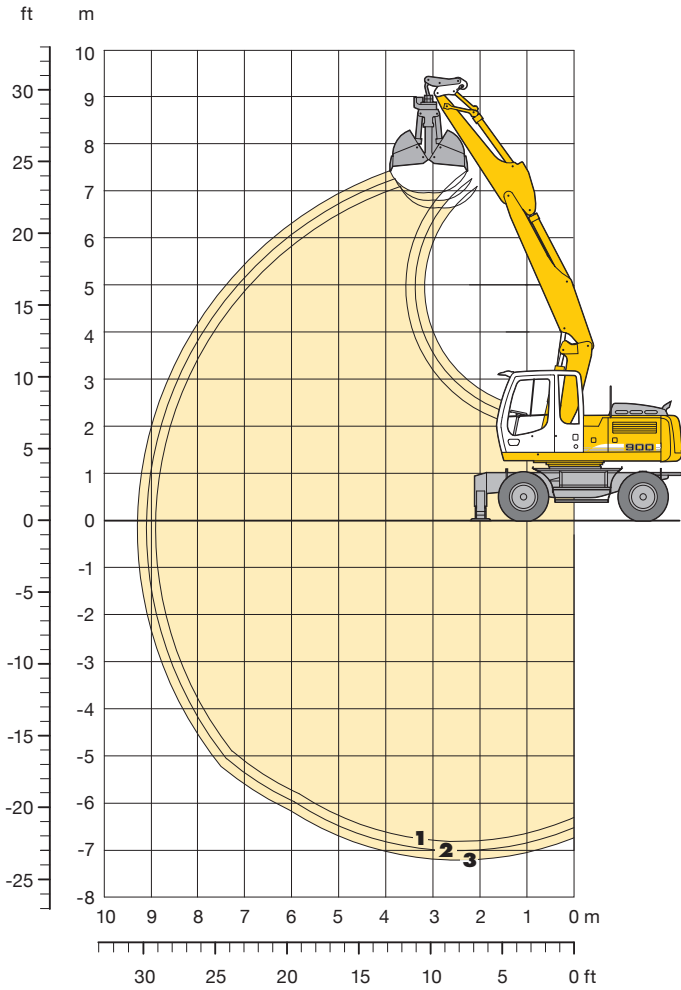
m	Undercarriage	3.0 m		4.5 m		6.0 m		7.5 m		m
		Stabilizers raised Stabilizer blade down 2 pt. outriggers down	Stabilizers raised Stabilizer blade down 2 pt. outriggers down	Stabilizers raised Stabilizer blade down 2 pt. outriggers down	Stabilizers raised Stabilizer blade down 2 pt. outriggers down	Stabilizers raised Stabilizer blade down 2 pt. outriggers down	Stabilizers raised Stabilizer blade down 2 pt. outriggers down	Stabilizers raised Stabilizer blade down 2 pt. outriggers down	Stabilizers raised Stabilizer blade down 2 pt. outriggers down	
9.0	Stabilizers raised Stabilizer blade down 2 pt. outriggers down									
7.5	Stabilizers raised Stabilizer blade down 2 pt. outriggers down							1.8' 1.8' 1.8'	1.8' 1.8' 1.8'	5.23
6.0	Stabilizers raised Stabilizer blade down 2 pt. outriggers down					2.8' 2.8' 2.8'	2.8' 2.8' 2.8'	1.6' 1.6' 1.6'	1.6' 1.6' 1.6'	6.58
4.5	Stabilizers raised Stabilizer blade down 2 pt. outriggers down					3.0 3.3 3.8	4.1' 4.1' 4.1'	1.5' 1.5' 1.5'	1.5' 1.5' 1.5'	7.37
3.0	Stabilizers raised Stabilizer blade down 2 pt. outriggers down	8.4 8.5' 8.5'	8.5' 8.5' 8.5'	4.4 4.9 5.7	5.8' 5.8' 5.8'	2.8 3.1 3.6	4.2 4.7' 4.7'	1.9 2.1 2.5	2.6' 2.6' 2.6'	7.79
1.5	Stabilizers raised Stabilizer blade down 2 pt. outriggers down	7.0 7.7' 7.7'	7.7' 7.7' 7.7'	3.9 4.4 5.2	6.2 7.2' 7.2'	2.6 2.9 3.4	4.0 5.3' 5.3'	1.8 2.0 2.4	2.8 3.3' 3.3'	7.88
0	Stabilizers raised Stabilizer blade down 2 pt. outriggers down	6.5 7.0' 7.0'	7.0' 7.0' 7.0'	3.6 4.1 4.9	5.8 8.0' 8.0'	2.4 2.7 3.2	3.8 5.8' 5.8'	1.7 1.9 2.3	2.7 3.0' 3.0'	7.67
-1.5	Stabilizers raised Stabilizer blade down 2 pt. outriggers down	6.5 7.4 9.1*	9.1' 9.1' 9.1'	3.5 3.9 4.7	5.7 8.0' 8.0'	2.3 2.6 3.1	3.7 5.8' 5.8'	1.8 2.1 2.5	2.6' 2.6' 2.6'	7.13
-3.0	Stabilizers raised Stabilizer blade down 2 pt. outriggers down	6.6 7.6 9.4	10.6' 10.6' 10.6'	3.5 4.0 4.8	5.7 7.2' 7.2'	2.4 2.7 3.2	3.7 5.0' 5.0'	2.3 2.6 3.0	3.6 3.9' 3.9'	6.17
-4.5	Stabilizers raised Stabilizer blade down 2 pt. outriggers down									

 Height
  Can be slewed through 360°
  In longitudinal position of undercarriage
  Max. reach
 * Limited by hydr. capacity

The lift capacities on the load hook of the Liebherr quick-change adapter 48 without grab attachment are stated in metric tons (t) and are valid on a firm, level supporting surface with blocked oscillating axle. These capacities can be slewed through 360° with the undercarriage in the transverse position. Capacities in the longitudinal position of the undercarriage (+/- 15°) are specified over the steering axle with the stabilizers raised and over the rigid axle with the stabilizers down. Indicated loads comply with the ISO 10567 standard and do not exceed 75% of tipping or 87% of hydraulic capacity, or are limited by the permissible load of the load hook on the quick-change adapter (max. 12 t). Without the quick-change adapter, lift capacities will increase by up to 226 kg. In accordance with the harmonised EU Standard EN 474-5, hydraulic excavators used for lifting operations must be equipped with pipe rupture protection devices on the hoist cylinders and an overload warning device.

Clamshell Attachment

with Hydr. Adjustable Boom 3.60 m



Digging Envelope with Quick Change Adapter

		1	2	3
Stick length	m	2.25	2.45	2.65
Max. digging depth	m	6.80	7.00	7.20
Max. reach at ground level	m	8.90	9.10	9.30
Max. dumping height	m	6.65	6.80	7.00

Clamshell Model

8 B

Max. tooth force	52 kN (5.3 t)
Max. torque of hydr. swivel	1.40 kNm

Operating Weight

The operating weight includes the basic machine with 8 tires plus spacer rings, hydr. adjustable boom 3.60 m, stick 2.25 m, quick change adapter 48 and clamshell model 8 B/0.40 m³ (800 mm without ejector).

Undercarriage versions	Weight
A 900 C Litronic with stabilizer blade	18,000 kg
A 900 C Litronic with 2 pt. outriggers	18,300 kg
A 900 C Litronic with stabilizer blade + 2 pt. outriggers	19,100 kg
A 900 C Litronic with 4 pt. outriggers	19,200 kg
A 900 C EW Litronic with stabilizer blade	18,100 kg
A 900 C EW Litronic with 2 pt. outriggers	18,400 kg

Clamshell Model 8 B Machine stability per ISO 10567* (75% of tipping capacity)

Width of shells	Capacity	Weight	Stabilizers raised			Stabilizer blade down			2 point outriggers down			Stabilizer blade + 2 pt. outr. down			4 point outriggers down			EW stabilizers raised			EW stabilizer blade down			EW 2 point outriggers down		
			Stick length (m)			Stick length (m)			Stick length (m)			Stick length (m)			Stick length (m)			Stick length (m)			Stick length (m)			Stick length (m)		
			2.25	2.45	2.65	2.25	2.45	2.65	2.25	2.45	2.65	2.25	2.45	2.65	2.25	2.45	2.65	2.25	2.45	2.65	2.25	2.45	2.65	2.25	2.45	2.65
320 ¹⁾	0.17	710	□	□	□	□	□	□	□	□	□	□	□	□	□	□	□	□	□	□	□	□	□	□	□	□
400 ¹⁾	0.22	750	□	□	□	□	□	□	□	□	□	□	□	□	□	□	□	□	□	□	□	□	□	□	□	□
600 ¹⁾	0.30	750	□	□	□	□	□	□	□	□	□	□	□	□	□	□	□	□	□	□	□	□	□	□	□	□
800 ¹⁾	0.40	800	□	□	□	□	□	□	□	□	□	□	□	□	□	□	□	□	□	□	□	□	□	□	□	□
1,000 ¹⁾	0.80	900	■	▲	▲	■	■	■	□	△	■	□	△	■	□	△	■	■	■	■	□	△	■	□	△	■
320 ²⁾	0.17	760	□	□	□	□	□	□	□	□	□	□	□	□	□	□	□	□	□	□	□	□	□	□	□	□
400 ²⁾	0.22	810	□	□	□	□	□	□	□	□	□	□	□	□	□	□	□	□	□	□	□	□	□	□	□	□
600 ²⁾	0.30	830	□	□	□	□	□	□	□	□	□	□	□	□	□	□	□	□	□	□	□	□	□	□	□	□
800 ²⁾	0.40	890	□	□	□	□	□	□	□	□	□	□	□	□	□	□	□	□	□	□	□	□	□	□	□	□

* Indicated loads are based on ISO 10567 and do not exceed 75% of tipping or 87% of hydraulic capacity, max. stick length without quick change adapter, lifted 360° on firm with blocked oscillating axle

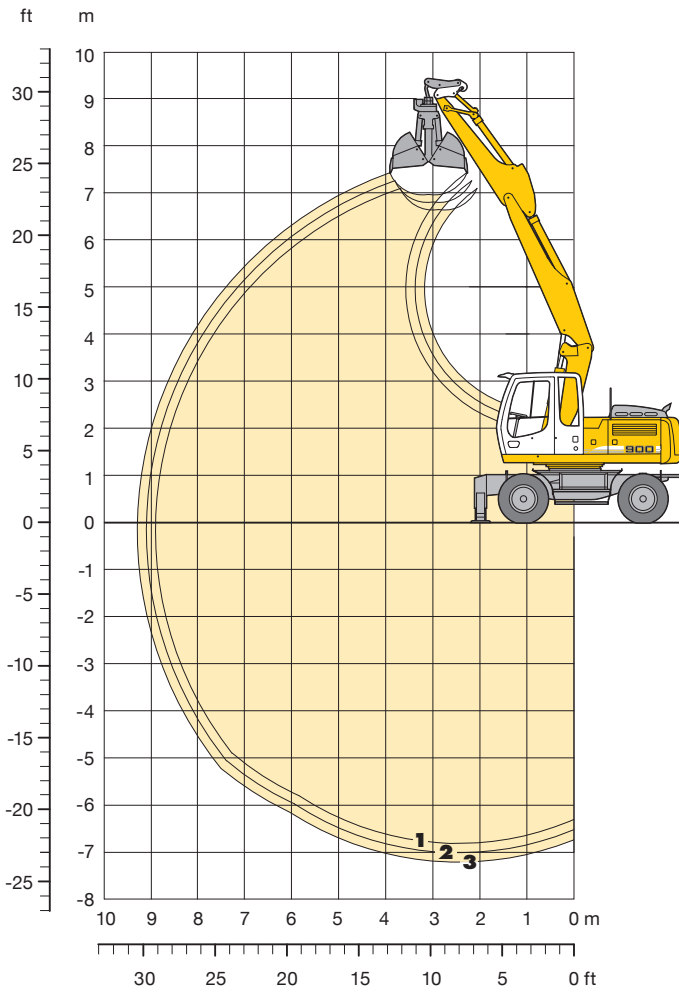
1) without ejector

2) with ejector

- = ≤ 1.8 t/m³ max. material weight
- △ = ≤ 1.5 t/m³ max. material weight
- = ≤ 1.2 t/m³ max. material weight
- ▲ = not authorized

Clamshell Attachment

with Hydr. Adjustable Boom 3.60 m



Digging Envelope with Quick Change Adapter

		1	2	3
Stick length	m	2.25	2.45	2.65
Max. digging depth	m	6.80	7.00	7.20
Max. reach at ground level	m	8.90	9.10	9.30
Max. dumping height	m	6.65	6.80	7.00

Clamshell Model

10 B

Max. tooth force	73 kN (7.4 t)
Max. torque of hydr. swivel	1.76 kNm

Operating Weight

The operating weight includes the basic machine with 8 tires plus spacer rings, hydr. adjustable boom 3.60 m, stick 2.25 m, quick change adapter 48 and clamshell model 10 B/0.45 m³ (800 mm without ejector).

Undercarriage versions	Weight
A 900 C Litronic [®] with stabilizer blade	18,100 kg
A 900 C Litronic [®] with 2 pt. outriggers	18,400 kg
A 900 C Litronic [®] with stabilizer blade + 2 pt. outriggers	19,200 kg
A 900 C Litronic [®] with 4 pt. outriggers	19,300 kg
A 900 C EW Litronic [®] with stabilizer blade	18,200 kg
A 900 C EW Litronic [®] with 2 pt. outriggers	18,500 kg

Clamshell Model 10 B Machine stability per ISO 10567* (75% of tipping capacity)

Width of shells mm	Capacity m ³	Weight kg	Stabilizers raised			Stabilizer blade down			2 point outriggers down			Stabilizer blade + 2 pt. outr. down			4 point outriggers down			EW stabilizers raised			EW stabilizer blade down			EW 2 point outriggers down		
			Stick length (m)			Stick length (m)			Stick length (m)			Stick length (m)			Stick length (m)			Stick length (m)			Stick length (m)			Stick length (m)		
			2.25	2.45	2.65	2.25	2.45	2.65	2.25	2.45	2.65	2.25	2.45	2.65	2.25	2.45	2.65	2.25	2.45	2.65	2.25	2.45	2.65	2.25	2.45	2.65
320 ¹⁾	0.17	770	□	□	□	□	□	□	□	□	□	□	□	□	□	□	□	□	□	□	□	□	□	□	□	
400 ¹⁾	0.22	820	□	□	□	□	□	□	□	□	□	□	□	□	□	□	□	□	□	□	□	□	□	□	□	
600 ¹⁾	0.35	860	□	□	□	□	□	□	□	□	□	□	□	□	□	□	□	□	□	□	□	□	□	□	□	
800 ¹⁾	0.45	910	□	□	□	□	□	□	□	□	□	□	□	□	□	□	□	□	□	□	□	□	□	□	□	
1,000 ¹⁾	0.60	970	△	■	■	□	△	△	□	□	△	□	□	△	□	□	△	□	△	△	□	□	△	□	□	△
320 ²⁾	0.17	820	□	□	□	□	□	□	□	□	□	□	□	□	□	□	□	□	□	□	□	□	□	□	□	
400 ²⁾	0.22	880	□	□	□	□	□	□	□	□	□	□	□	□	□	□	□	□	□	□	□	□	□	□	□	
600 ²⁾	0.35	950	□	□	□	□	□	□	□	□	□	□	□	□	□	□	□	□	□	□	□	□	□	□	□	
800 ²⁾	0.45	1,010	□	□	△	□	□	□	□	□	□	□	□	□	□	□	□	□	□	□	□	□	□	□	□	

* Indicated loads are based on ISO 10567 and do not exceed 75% of tipping or 87% of hydraulic capacity, max. stick length without quick change adapter, lifted 360° on firm with blocked oscillating axle

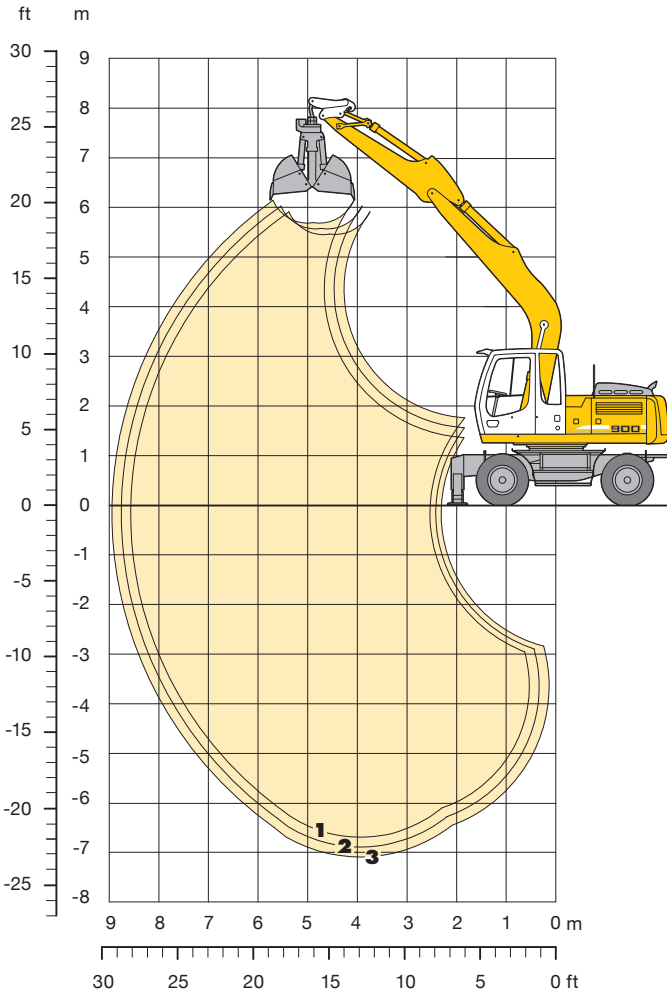
1) without ejector

2) with ejector

- = ≤ 1.8 t/m³ max. material weight
- △ = ≤ 1.5 t/m³ max. material weight
- = ≤ 1.2 t/m³ max. material weight
- ▲ = not authorized

Clamshell Attachment

with Gooseneck Boom 5.00 m



Digging Envelope with Quick Change Adapter

		1	2	3
Stick length	m	2.25	2.45	2.65
Max. digging depth	m	6.70	6.90	7.10
Max. reach at ground level	m	8.60	8.80	9.00
Max. dumping height	m	5.45	5.55	5.70

Clamshell Model

8 B

Max. tooth force	52 kN (5.3 t)
Max. torque of hydr. swivel	1.40 kNm

Operating Weight

The operating weight includes the basic machine with 8 tires plus spacer rings, gooseneck boom 5.00 m, stick 2.25 m, quick change adapter 48 and clamshell model 8 B/0.40 m³ (800 mm without ejector).

Undercarriage versions	Weight
A 900 C Litronic [®] with stabilizer blade	17,700 kg
A 900 C Litronic [®] with 2 pt. outriggers	18,000 kg
A 900 C Litronic [®] with stabilizer blade + 2 pt. outriggers	18,800 kg
A 900 C Litronic [®] with 4 pt. outriggers	18,900 kg
A 900 C EW Litronic [®] with stabilizer blade	17,800 kg
A 900 C EW Litronic [®] with 2 pt. outriggers	18,100 kg

Clamshell Model 8 B Machine stability per ISO 10567* (75% of tipping capacity)

Width of shells mm	Capacity m ³	Weight kg	Stabilizers raised			Stabilizer blade down			2 point outriggers down			Stabilizer blade + 2 pt. outr. down			4 point outriggers down			EW stabilizers raised			EW stabilizer blade down			EW 2 point outriggers down		
			Stick length (m)			Stick length (m)			Stick length (m)			Stick length (m)			Stick length (m)			Stick length (m)			Stick length (m)			Stick length (m)		
			2.25	2.45	2.65	2.25	2.45	2.65	2.25	2.45	2.65	2.25	2.45	2.65	2.25	2.45	2.65	2.25	2.45	2.65	2.25	2.45	2.65	2.25	2.45	2.65
320 ¹⁾	0.17	710	□	□	□	□	□	□	□	□	□	□	□	□	□	□	□	□	□	□	□	□	□	□	□	
400 ¹⁾	0.22	750	□	□	□	□	□	□	□	□	□	□	□	□	□	□	□	□	□	□	□	□	□	□	□	
600 ¹⁾	0.30	750	□	□	□	□	□	□	□	□	□	□	□	□	□	□	□	□	□	□	□	□	□	□	□	
800 ¹⁾	0.40	800	□	□	□	□	□	□	□	□	□	□	□	□	□	□	□	□	□	□	□	□	□	□	□	
1,000 ¹⁾	0.80	900	■	■	■	△	△	■	□	△	■	□	△	■	□	△	■	△	△	■	□	△	■	□	△	■
320 ²⁾	0.17	760	□	□	□	□	□	□	□	□	□	□	□	□	□	□	□	□	□	□	□	□	□	□	□	
400 ²⁾	0.22	810	□	□	□	□	□	□	□	□	□	□	□	□	□	□	□	□	□	□	□	□	□	□	□	
600 ²⁾	0.30	830	□	□	□	□	□	□	□	□	□	□	□	□	□	□	□	□	□	□	□	□	□	□	□	
800 ²⁾	0.40	890	□	□	□	□	□	□	□	□	□	□	□	□	□	□	□	□	□	□	□	□	□	□	□	

* Indicated loads are based on ISO 10567 and do not exceed 75% of tipping or 87% of hydraulic capacity, max. stick length without quick change adapter, lifted 360° on firm with blocked oscillating axle

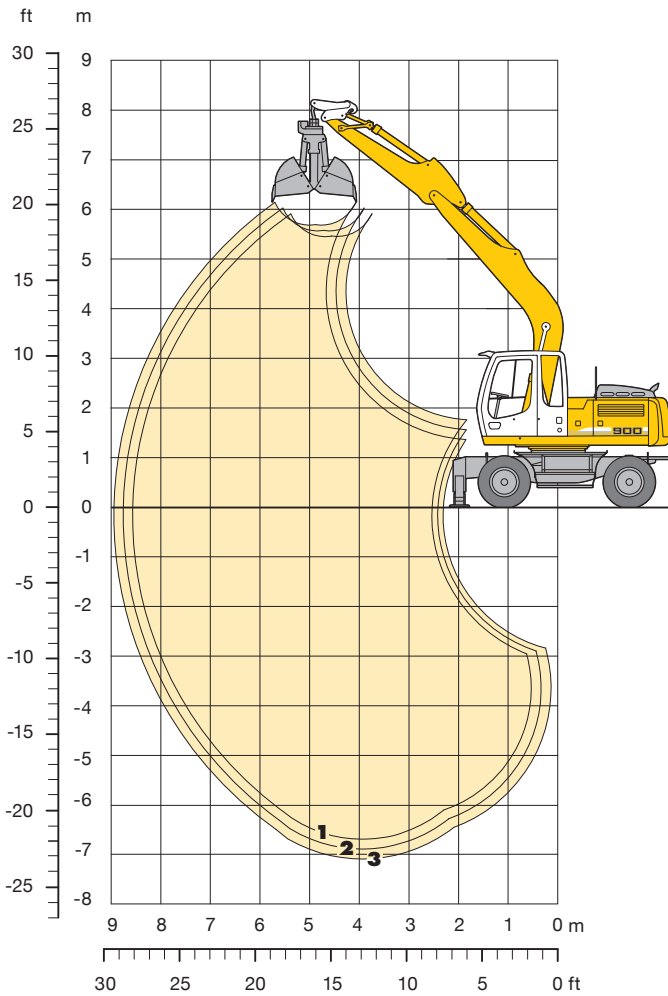
1) without ejector

2) with ejector

- = ≤ 1.8 t/m³ max. material weight
- △ = ≤ 1.5 t/m³ max. material weight
- = ≤ 1.2 t/m³ max. material weight
- ▲ = not authorized

Clamshell Attachment

with Gooseneck Boom 5.00 m



Digging Envelope with Quick Change Adapter

		1	2	3
Stick length	m	2.25	2.45	2.65
Max. digging depth	m	6.70	6.90	7.10
Max. reach at ground level	m	8.60	8.80	9.00
Max. dumping height	m	5.45	5.55	5.70

Clamshell Model

10 B

Max. tooth force	73 kN (7.4 t)
Max. torque of hydr. swivel	1.76 kNm

Operating Weight

The operating weight includes the basic machine with 8 tires plus spacer rings, gooseneck boom 5.00 m, stick 2.25 m, quick change adapter 48 and clamshell model 10 B/0.45 m³ (800 mm without ejector).

Undercarriage versions	Weight
A 900 C Litronic [®] with stabilizer blade	17,800 kg
A 900 C Litronic [®] with 2 pt. outriggers	18,100 kg
A 900 C Litronic [®] with stabilizer blade + 2 pt. outriggers	18,900 kg
A 900 C Litronic [®] with 4 pt. outriggers	19,000 kg
A 900 C EW Litronic [®] with stabilizer blade	17,900 kg
A 900 C EW Litronic [®] with 2 pt. outriggers	18,200 kg

Clamshell Model 10 B Machine stability per ISO 10567* (75% of tipping capacity)

Width of shells mm	Capacity m ³	Weight kg	Stabilizers raised			Stabilizer blade down			2 point outriggers down			Stabilizer blade + 2 pt. outr. down			4 point outriggers down			EW stabilizers raised			EW stabilizer blade down			EW 2 point outriggers down		
			Stick length (m)			Stick length (m)			Stick length (m)			Stick length (m)			Stick length (m)			Stick length (m)			Stick length (m)			Stick length (m)		
			2.25	2.45	2.65	2.25	2.45	2.65	2.25	2.45	2.65	2.25	2.45	2.65	2.25	2.45	2.65	2.25	2.45	2.65	2.25	2.45	2.65	2.25	2.45	2.65
320 ¹⁾	0.17	770	□	□	□	□	□	□	□	□	□	□	□	□	□	□	□	□	□	□	□	□	□	□	□	
400 ¹⁾	0.22	820	□	□	□	□	□	□	□	□	□	□	□	□	□	□	□	□	□	□	□	□	□	□	□	
600 ¹⁾	0.35	860	□	□	□	□	□	□	□	□	□	□	□	□	□	□	□	□	□	□	□	□	□	□	□	
800 ¹⁾	0.45	910	□	□	□	□	□	□	□	□	□	□	□	□	□	□	□	□	□	□	□	□	□	□	□	
1,000 ¹⁾	0.60	970	△	△	△	□	□	□	□	□	□	□	□	□	□	□	□	□	□	□	□	□	□	□	□	
320 ²⁾	0.17	820	□	□	□	□	□	□	□	□	□	□	□	□	□	□	□	□	□	□	□	□	□	□	□	
400 ²⁾	0.22	880	□	□	□	□	□	□	□	□	□	□	□	□	□	□	□	□	□	□	□	□	□	□	□	
600 ²⁾	0.35	950	□	□	□	□	□	□	□	□	□	□	□	□	□	□	□	□	□	□	□	□	□	□	□	
800 ²⁾	0.45	1,010	□	□	□	□	□	□	□	□	□	□	□	□	□	□	□	□	□	□	□	□	□	□	□	

* Indicated loads are based on ISO 10567 and do not exceed 75% of tipping or 87% of hydraulic capacity, max. stick length without quick change adapter, lifted 360° on firm with blocked oscillating axle

1) without ejector

2) with ejector

- = ≤ 1.8 t/m³ max. material weight
- △ = ≤ 1.5 t/m³ max. material weight
- = ≤ 1.2 t/m³ max. material weight
- ▲ = not authorized

Attachments

Ditchcleaning Buckets/Tilting Buckets

Ditchcleaning Buckets Machine stability per ISO 10567* (75% of tipping capacity)

Cutting width mm	Capacity ISO 7451 ¹⁾ m ³	Weight kg	Stabilizers raised			Stabilizer blade down			2 point outriggers down			Stabilizer blade + 2 pt. outr. down			4 point outriggers down			EW stabilizers raised			EW stabilizer blade down			EW 2 point outriggers down				
			Stick length (m)			Stick length (m)			Stick length (m)			Stick length (m)			Stick length (m)			Stick length (m)			Stick length (m)			Stick length (m)				
			2.25	2.45	2.65	2.25	2.45	2.65	2.25	2.45	2.65	2.25	2.45	2.65	2.25	2.45	2.65	2.25	2.45	2.65	2.25	2.45	2.65	2.25	2.45	2.65	2.25	2.45
Hydr. Adjustable Boom 3.60 m																												
1,500 ³⁾	0.50	430	□	□	□	□	□	□	□	□	□	□	□	□	□	□	□	□	□	□	□	□	□	□	□	□	□	□
1,600 ²⁾	0.55	690	□	□	□	□	□	□	□	□	□	□	□	□	□	□	□	□	□	□	□	□	□	□	□	□	□	□
1,600 ²⁾	0.80	850	■	■	▲	△	■	■	□	△	■	□	△	■	□	△	■	■	■	□	△	■	□	△	■	□	△	■
2,000 ²⁾	0.50	690	□	□	□	□	□	□	□	□	□	□	□	□	□	□	□	□	□	□	□	□	□	□	□	□	□	□
2,000 ³⁾	0.48	400	□	□	□	□	□	□	□	□	□	□	□	□	□	□	□	□	□	□	□	□	□	□	□	□	□	□
2,000 ²⁾	0.70	880	■	■	■	△	△	△	□	△	□	△	□	△	□	△	△	△	△	□	△	□	△	□	△	□	△	□
Gooseneck Boom 5.00 m																												
1,500 ³⁾	0.50	430	□	□	□	□	□	□	□	□	□	□	□	□	□	□	□	□	□	□	□	□	□	□	□	□	□	□
1,600 ²⁾	0.55	690	□	□	□	□	□	□	□	□	□	□	□	□	□	□	□	□	□	□	□	□	□	□	□	□	□	□
1,600 ²⁾	0.80	850	■	■	■	△	△	△	□	△	△	□	△	△	□	△	△	△	△	□	△	△	△	□	△	△	□	△
2,000 ²⁾	0.50	690	□	□	□	□	□	□	□	□	□	□	□	□	□	□	□	□	□	□	□	□	□	□	□	□	□	□
2,000 ³⁾	0.48	400	□	□	□	□	□	□	□	□	□	□	□	□	□	□	□	□	□	□	□	□	□	□	□	□	□	□
2,000 ²⁾	0.70	880	△	△	■	□	□	△	□	△	□	△	□	△	□	△	□	△	□	△	□	△	□	△	□	△	□	△
Adjustable Up/Down Plus Offset Boom 3.60 m																												
1,500 ³⁾	0.50	430	□	□	□	□	□	□	□	□	□	□	□	□	□	□	□	□	□	□	□	□	□	□	□	□	□	□
1,600 ²⁾	0.55	690	□	△	△	□	□	□	□	□	□	□	□	□	□	□	□	□	□	□	□	□	□	□	□	□	□	□
1,600 ²⁾	0.80	850	▲	▲	▲	■	■	■	□	△	■	□	△	■	□	△	■	■	■	□	△	■	□	△	■	□	△	■
2,000 ²⁾	0.50	690	□	□	□	□	□	□	□	□	□	□	□	□	□	□	□	□	□	□	□	□	□	□	□	□	□	□
2,000 ³⁾	0.48	400	□	□	□	□	□	□	□	□	□	□	□	□	□	□	□	□	□	□	□	□	□	□	□	□	□	□
2,000 ²⁾	0.70	880	■	▲	▲	△	■	△	□	△	△	□	△	△	□	△	△	△	■	△	□	△	△	□	△	△	□	△
Adjustable Offset Boom 4.90 m																												
1,500 ³⁾	0.50	430	□	□	□	□	□	□	□	□	□	□	□	□	□	□	□	□	□	□	□	□	□	□	□	□	□	□
1,600 ²⁾	0.55	690	□	□	□	□	□	□	□	□	□	□	□	□	□	□	□	□	□	□	□	□	□	□	□	□	□	□
1,600 ²⁾	0.80	850	■	■	■	□	△	■	□	△	■	□	△	■	□	△	■	■	■	□	△	■	□	△	■	□	△	■
2,000 ²⁾	0.50	690	□	□	□	□	□	□	□	□	□	□	□	□	□	□	□	□	□	□	□	□	□	□	□	□	□	□
2,000 ³⁾	0.48	400	□	□	□	□	□	□	□	□	□	□	□	□	□	□	□	□	□	□	□	□	□	□	□	□	□	□
2,000 ²⁾	0.70	880	△	△	△	□	□	△	□	□	△	□	□	△	□	□	△	□	△	□	△	□	△	□	△	□	△	□

Tilting Buckets Machine stability per ISO 10567* (75% of tipping capacity)

Cutting width mm	Capacity ISO 7451 ¹⁾ m ³	Weight kg	Stabilizers raised			Stabilizer blade down			2 point outriggers down			Stabilizer blade + 2 pt. outr. down			4 point outriggers down			EW stabilizers raised			EW stabilizer blade down			EW 2 point outriggers down				
			Stick length (m)			Stick length (m)			Stick length (m)			Stick length (m)			Stick length (m)			Stick length (m)			Stick length (m)			Stick length (m)				
			2.25	2.45	2.65	2.25	2.45	2.65	2.25	2.45	2.65	2.25	2.45	2.65	2.25	2.45	2.65	2.25	2.45	2.65	2.25	2.45	2.65	2.25	2.45	2.65	2.25	2.45
Hydr. Adjustable Boom 3.60 m																												
1,500 ²⁾	0.60	680	□	□	△	□	□	□	□	□	□	□	□	□	□	□	□	□	□	□	□	□	□	□	□	□	□	□
1,600 ²⁾	0.80	820	■	■	▲	△	■	△	□	△	△	□	△	△	□	△	△	△	■	△	□	△	△	□	△	△	□	△
Gooseneck Boom 5.00 m																												
1,500 ²⁾	0.60	680	□	□	□	□	□	□	□	□	□	□	□	□	□	□	□	□	□	□	□	□	□	□	□	□	□	□
1,600 ²⁾	0.80	820	■	■	■	△	△	△	□	△	△	□	△	△	□	△	△	△	△	□	△	△	△	□	△	△	□	△
Adjustable Up/Down Plus Offset Boom 3.60 m																												
1,500 ²⁾	0.60	680	△	△	△	□	□	□	□	□	□	□	□	□	□	□	□	□	□	□	□	□	□	□	□	□	□	□
1,600 ²⁾	0.80	820	▲	▲	▲	■	■	■	□	△	■	□	△	■	□	△	■	■	■	■	□	△	■	□	△	■	□	△
Adjustable Offset Boom 4.90 m																												
1,500 ²⁾	0.60	680	□	□	□	□	□	□	□	□	□	□	□	□	□	□	□	□	□	□	□	□	□	□	□	□	□	□
1,600 ²⁾	0.80	820	■	■	■	□	△	■	□	△	■	□	△	■	□	△	■	□	△	■	□	△	■	□	△	■	□	△

* Indicated loads are based on ISO 10567 and do not exceed 75% of tipping or 87% of hydraulic capacity, max. stick length without quick change adapter, lifted 360° on firm with blocked oscillating axle

¹⁾ comparable with SAE (heaped)

²⁾ with 2 x 50° rotator

³⁾ rigid ditchcleaning bucket

□ = ≤ 1.8 t/m³ max. material weight

△ = ≤ 1.5 t/m³ max. material weight

■ = ≤ 1.2 t/m³ max. material weight

▲ = not authorized

Equipment



Undercarriage

2-circuit brake system	•
Support individually controllable	+
Tires Mitas EM 22	•
Wide gauge 2.75 m	+
Travel speed levels (four)	•
Piston rod protection support cylinders	+
Powershift transmission	•
Parking brake, maintenance-free	•
Tire variants, various	+
Pipe fracture safety on support cylinders	•
Custom paintwork undercarriage	+
Speeder*	+
Tool box on both sides, lockable	•
Central lubrication undercarriage	+



Uppercarriage

Refueling pump, electrical	+
Main battery switch for electrical system	•
Engine hood with gas spring	•
Uppercarriage doors, lockable	•
Uppercarriage lock electro-hydraulically activated from the cab	•
Beacon on engine hood	+
Custom paintwork uppercarriage	+
Power socket 12 V, 20 A	+
Central lubricating system, automatic	+
Central lubricating system, semi-automatic	•



Hydraulics

Stop cock between hydraulic tank and pump(s)	•
Pressure test fittings	•
Accumulator for controlled lowering of the attachment with the engine shut down	•
Hydraulic oil from -20 °C to +40 °C	•
Hydraulic oil filter with integrated microfilter	•
Hydraulic oil pre-heating	+
Liebherr hydraulic oil, biologically degradable	+
Liebherr hydraulic oil, specially for warm and cold regions	+
Mowing bucket and mulcher operation	+
Bypass filter	+
Change-over for controls (hammer/shear operation via pedals or joystick)	+



Engine

Fuel theft protection	+
Fuel preheating	+
Coolant preheating 230 V	+
Liebherr particle filter	+
Fan drive, reversible	+
Air pre-cleaner	+



Operator's Cab

Hourmeter, readable from the outside	•
Roof window	•
Travel alarm	+
Fire extinguisher	+
Bottle holder	•
FOPS cab protection system	•
Slide-in front window	•
Floor mat removable	•
Display, large, for all indicating, monitoring and warning functions	•
Coat hook	•
Automatic climate control	•
Consoles and seat adjustable separately or in combination	•
Cooler, electrical	+
Steering column adjustable horizontally	•
LIDAT***	+
Liebherr proportional controls	+
Automatic engine shut-down (time adjustable)	+
Bullet proof glass (front and top)	+
Radio system	+
Smokers package	•
Rear view camera**	•
Back-up alarm	+
Beacon	+
Tainted glass	•
Windshield washer	•
Rear wiper	+
Wiper lower front window	+
Sliding window in the door	•
Sun roller blind	•
Auxiliary heater with timer	+
Immobilizer electronic (key code)	+
Xenon headlights (front resp. rear)	+
Auxiliary headlights (front resp. rear)	+



Attachment

Main boom, adjustable in height and laterally	+
Main boom, adjustable in height	+
Slope attachment	+
Function hammer/shear operation incl. tubing	+
Grapple sticks	+
Hoist limitation, electronic	+
Piston rod protection bucket cylinder	+
Piston rod protection stick cylinder	+
Load hook on stick	+
Shackle on stick	+
Leak oil line, additional for attaching tools	+
Liebherr ditchcleaning bucket program	+
Liebherr pallet forks	+
Liebherr pipe laying device	+
Liebherr quick change adapter, hydraulic or mechanical	+
Liebherr tilting bucket program	+
Liebherr swivel rotator program	+
Liebherr sorting grapple program	+
Liebherr backhoe bucket program	+
Liebherr tooth system	+
Liebherr clamshell grapple program	+
LIKUFIX, coupling hydraulic tools from the cab	+
Gooseneck boom	+
Gooseneck boom, stretched	+
Gooseneck boom, laterally adjustable	+
Multi-User attachment	+
Pipe fracture safety boom cylinders	•
Pipe fracture safety stick resp. bucket cylinder	+
Hose quick coupling at end of stick	•
Custom painting for tools	+
Tool-Control, 10 tool adjustments selectable over the display	+
Tool-Management, fully automatic tool recognition	+
Overload warning device	•
Bottom chord protection for stick	+
Central lubricating system, expanded for connecting link	+
Central lubrication for quick change adapter	+

• = Standard, + = Option

* = not available in all countries, ** = country-dependent, *** = starting mid 2010

Options and/or special attachments, supplied by vendors other than Liebherr, are only to be installed with the knowledge and approval of Liebherr to retain warranty.

All illustrations and data may differ from standard equipment. Subject to change without notice.

The Liebherr Group of Companies

Wide product range

The Liebherr Group is one of the largest construction equipment manufacturers in the world. Liebherr's high-value products and services enjoy a high reputation in many other fields, too. The wide range includes domestic appliances, aerospace and transportation systems, machine tools and maritime cranes.

Exceptional customer benefit

Every product line provides a complete range of models in many different versions. With both their technical excellence and acknowledged quality, Liebherr products offer a maximum of customer benefits in practical application.

State-of-the-art technology

To provide consistent, top quality products, Liebherr attaches great importance to each product area, its components and core technologies. Important modules and components are developed and manufactured in-house, for instance the entire drive and control technology for construction equipment.

Worldwide and independent

Hans Liebherr founded the Liebherr family company in 1949. Since that time, the enterprise has steadily grown to a group of more than 100 companies with over 32,000 employees located on all continents. The corporate headquarters of the Group is Liebherr-International AG in Bulle, Switzerland. The Liebherr family is the sole owner of the company.

www.liebherr.com



Printed in Germany by Geiselman RG-BK-PP LHB/VF 8421034-3-04.10_enGB

Liebherr-Hydraulikbagger GmbH

Liebherrstraße 12, D-88457 Kirchdorf/Iller

☎ +49 7354 80-0, Fax +49 7354 80-7294

www.liebherr.com, E-Mail: info.lhb@liebherr.com